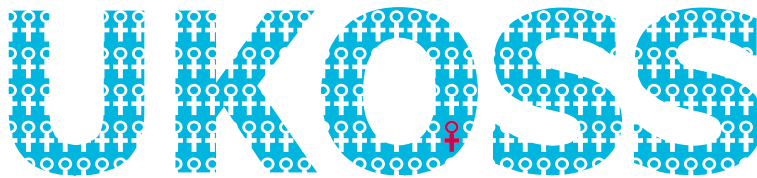




Royal College of
Obstetricians and
Gynaecologists



UK Obstetric Surveillance System



Newsletter 27: October 2011

Spotlight on Aortic Dissection

Have you seen any women with aortic dissection in the last two years?

If you haven't already told us, please can you let us know? Email ukoss@npeu.ox.ac.uk, or phone 01865 289714

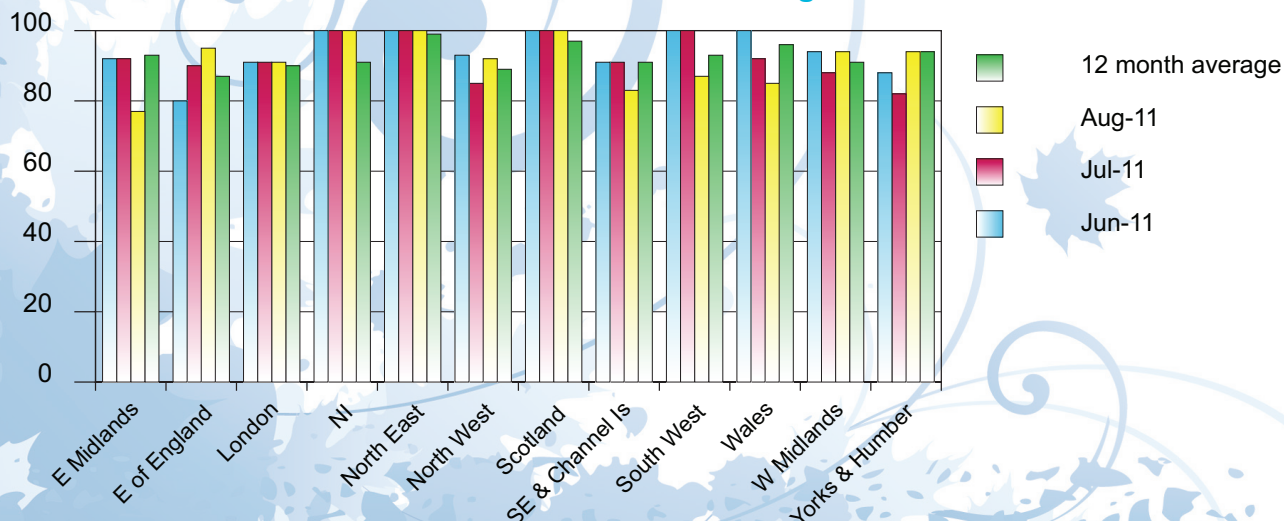
The aortic dissection study is due to finish shortly, and has, to date, identified only 12 cases in a two year study period. We are therefore seeking to identify any retrospective reports of women with aortic dissection which you may have identified, who were either managed on other wards, in other hospitals, or simply overlooked at the time. We will include both women who died and women who survived, so even if you have previously notified a maternal death from aortic dissection, please also report it to this UKOSS study. If you only have minimal information, we don't mind, we will try to track down the missing details!

There were seven maternal deaths from aortic dissection reported in the 2006-8 Confidential Enquiry (1), and nine deaths in the previous triennium (2). It has been noted several times in the confidential enquiry reports that aortic dissection should be considered part of the differential diagnosis of chest pain, and particularly that women with severe chest or abdominal pain requiring opiate analgesia must be investigated. However, studying maternal deaths only gives part of the picture; we have very little information about women who survived to compare with and thus highlight good practice in improving maternal and fetal outcomes. One of the aims of this UKOSS study, led by Sheba Jarvis, Mandish Dhanjal, Richard Gibbs and Catherine Williamson from Imperial College Healthcare NHS Trust and Queen Charlotte's and Chelsea Hospital, is to analyse the clinical investigation and management undertaken in pregnant women with aortic dissection and recommend steps to improve maternal and fetal survival, based on a comparison between women who died and those who survive.

- References:** 1. Lewis, G, ed. Saving Mothers' Lives: 2006-2008. BJOG. 2011 Mar;118 Suppl 1:1-203.
2. Lewis, G, ed. Saving Mothers' Lives: 2003-2005. 2007, CEMACH: London.

UKOSS Regional Card Return Rates

Card return rates June 2011 - August 2011



Thanks to the following hospitals who have returned cards for the last three months:

Aberdeen Maternity Hospital, Aberdeen
 Airedale General Hospital, Keighley
 Alexandra Hospital, Redditch
 Altnagalvin Area Hospital, Londonderry
 Antrim Hospital, Antrim
 Arrowe Park Hospital, Wirral
 Ayrshire Maternity Unit, Kilmarnock
 Barnet and Chase Farm Hospitals NHS Trust, Enfield
 Basildon Hospital, Basildon
 Bassettlaw District General Hospital, Worksop
 Bedford Hospital, Bedford
 Birmingham City Hospital, Birmingham
 Birmingham Women's Hospital, Birmingham
 Borders General Hospital, Melrose
 Bradford Royal Infirmary, Bradford
 Bronglais Hospital, Aberystwyth
 Broomfield Hospital, Chelmsford
 Burnley General Hospital, Burnley
 Caithness General Hospital, Wick
 Causeway Hospital, Coleraine
 Chelsea & Westminster Hospital, London
 Chesterfield & North Derbyshire Royal Hospital, Chesterfield
 City Hospitals Sunderland NHS Trust, Sunderland
 Colchester General Hospital, Colchester
 Conquest Hospital, St Leonards-on-Sea
 Countess of Chester Hospital, Chester
 Craigavon Area Hospital, Portadown
 Croydon University Hospital, Thornton Heath
 Cumberland Infirmary, Carlisle
 Daisy Hill Hospital, Newry
 Darent Valley Hospital, Dartford
 Darlington Memorial Hospital, Darlington
 Derby Hospitals NHS Foundation Trust, Derby
 Derriford Hospital, Plymouth
 Diana Princess of Wales Hospital, Grimsby
 Doncaster Royal Infirmary, Doncaster
 Dorset County Hospital, Dorchester
 Dr Gray's Hospital, Elgin
 Dumfries & Galloway Royal Infirmary, Dumfries
 Ealing Hospital, London
 Eastbourne District General Hospital, Eastbourne
 Erne Hospital, Enniskillen
 Fairfield General Hospital, Bury
 Forth Park Hospital, Kirkcaldy
 Forth Valley Royal Hospital, Larbert
 Friarage Hospital, Northallerton
 Frimley Park Hospital, Camberley
 George Eliot Hospital, Nuneaton
 Glan Clwyd District General Hospital, Rhyl
 Good Hope Hospital, Sutton Coldfield
 Guy's and St Thomas' Hospital, London
 Harrogate District Hospital, Harrogate
 Hereford County Hospital, Hereford
 Hillingdon Hospital, Uxbridge
 Hinchingsbrooke Hospital, Huntingdon
 Homerton University Hospital, London
 Hope Hospital, Manchester
 Hull Royal Infirmary, Hull
 Ipswich Hospital, Ipswich
 James Cook University Hospital, Middlesbrough
 James Paget Hospital, Great Yarmouth
 Jersey General Hospital, St Helier
 John Radcliffe Hospital, Oxford
 Kettering General Hospital, Kettering
 King's College Hospital, London
 King's Mill Hospital, Sutton in Ashfield
 Leeds General Infirmary, Leeds
 Leighton Hospital, Crewe
 Lincoln County Hospital, Lincoln
 Lister Hospital, Stevenage
 Liverpool Women's Hospital, Liverpool
 Luton & Dunstable Hospital, Luton
 Macclesfield District General Hospital, Macclesfield
 Maidstone General Hospital, Maidstone
 Manor Hospital, Walsall
 Mater Infirmorum Hospital, Belfast
 Medway Maritime Hospital, Gillingham
 Milton Keynes General Hospital, Milton Keynes
 New Cross Hospital, Wolverhampton
 Ninewells Hospital & Medical School, Dundee
 Nobles Hospital, Douglas
 Norfolk & Norwich University Hospital, Norwich
 North Devon District Hospital, Barnstaple
 North Manchester General Hospital, Manchester
 North Middlesex Hospital, London
 Nottingham City Hospital, Nottingham
 Pembury Hospital, Tunbridge Wells
 Peterborough City Hospital, Peterborough
 Pilgrim Hospital, Boston
 Pinderfields General Hospital, Wakefield
 Poole Hospital, Poole
 Prince Charles Hospital, Methyr Tydfil
 Princess Alexandra Hospital, Harlow
 Princess Elizabeth Hospital, St Martins
 Princess of Wales Hospital, Bridgend
 Princess Royal Hospital, Haywards Heath
 Princess Royal Maternity Hospital, Glasgow
 Queen Alexandra Hospital, Portsmouth
 Queen Charlotte's and Chelsea Hospital, London
 Queen Elizabeth Hospital, Gateshead
 Queen Elizabeth Hospital, Kings Lynn
 Queen Elizabeth Hospital, London
 Queen Elizabeth the Queen Mother Hospital, Margate
 Queen's Hospital, Burton upon Trent
 Raigmore Hospital, Inverness
 Rosie Maternity Hospital, Cambridge
 Rotherham District General Hospital, Rotherham
 Royal Albert Edward Infirmary, Wigan
 Royal Alexandra Hospital, Paisley
 Royal Berkshire Hospital, Reading
 Royal Cornwall Hospital, Truro
 Royal Gwent Hospital, Newport
 Royal Hampshire County Hospital, Winchester
 Royal Jubilee Maternity Service, Belfast
 Royal Lancaster Infirmary, Lancaster
 Royal Shrewsbury Hospital, Shrewsbury
 Royal Surrey County Hospital, Guildford
 Royal United Hospital, Bath
 Royal Victoria Infirmary, Newcastle-upon-Tyne
 Russells Hall Hospital, Dudley
 Salisbury District Hospital, Salisbury
 Scarborough Hospital, Scarborough
 Scunthorpe General Hospital, Scunthorpe
 Simpson Centre for Reproductive Health, Edinburgh
 Singleton Hospital, Swansea
 South Tyneside District Hospital, South Shields
 Southend Hospital, Westcliff-on-Sea
 Southern General Hospital, Glasgow
 Southmead Hospital, Bristol
 Southport & Ormskirk Hospital NHS Trust, Ormskirk
 St George's Hospital, London
 St Helier Hospital, Carshalton
 St John's Unit at Howden, Livingston
 St Mary's Hospital, London
 St Mary's Hospital, Manchester
 St Mary's Hospital, Newport
 St Michael's Hospital, Bristol
 St Peter's Hospital, Chertsey
 Staffordshire General Hospital, Stafford
 Stepping Hill Hospital, Stockport
 Stoke Mandeville Hospital, Aylesbury
 Taunton and Somerset Hospital, Taunton
 The Great Western Hospital, Swindon
 The Jessop Wing, Sheffield
 The Portland Hospital, London
 Torbay Hospital, Torquay
 Ulster Hospital, Belfast
 University College Hospital, London
 University Hospital Lewisham, London
 University Hospital of Coventry & Warwickshire, Coventry
 University Hospital of North Durham, Durham
 University Hospital of North Tees, Stockton-on-Tees
 Victoria Hospital, Blackpool
 Wansbeck General Hospital, Ashington
 Warrington Hospital, Warrington
 Warwick Hospital, Warwick
 Watford General Hospital, Watford
 West Cumberland Hospital, Whitehaven
 West Middlesex University Hospital, Isleworth
 West Suffolk Hospital, Bury St Edmunds
 West Wales General Hospital, Carmarthen
 Western Isles Hospital, Stornaway
 Wexham Park Hospital, Slough
 Whipps Cross University Trust Hospital, London
 Whiston Hospital, Prescot
 Whittington Hospital, London
 William Harvey Hospital, Ashford
 Wishaw General Hospital, Wishaw
 Withybush Hospital, Haverfordwest
 Worcestershire Royal Hospital, Worcester
 Worthing Hospital, Worthing
 Wrexham Maelor Hospital, Wrexham
 Wythenshawe Hospital, Manchester
 Yeovil Women's Hospital, Yeovil
 York Hospital, York
 Ysbyty Gwynedd District General Hospital, Bangor
 Barnet General Hospital, Barnet
 Barnsley District General Hospital, Barnsley
 Birmingham Heartlands Hospital, Birmingham
 Dewsbury and District Hospital, Dewsbury
 East Surrey Hospital, Redhill
 Epsom General Hospital, Epsom
 Furness General Hospital, Barrow-in-Furness
 Gloucestershire Royal Hospital, Gloucester
 Horton Hospital, Banbury
 Kingston Hospital, Kingston upon Thames
 Leicester General Hospital, Leicester
 Nevill Hall Hospital, Abergavenny
 Nottingham University Hospitals NHS Trust, Nottingham
 Princess Anne Hospital, Southampton
 Princess Royal University Hospital, Orpington
 Queen Elizabeth II Hospital, Welwyn Garden City
 Royal Devon & Exeter Hospital, Exeter
 Royal Free Hospital, London
 Royal Glamorgan Hospital, Llantrisant
 Royal London Hospital, London
 Royal Oldham Hospital, Oldham
 Royal Preston Hospital, Preston
 St James's University Hospital, Leeds
 St Richard's Hospital, Chichester
 University Hospital of Wales, Cardiff
 King George Hospital, Ilford
 Leicester Royal Infirmary, Leicester
 Newham General Hospital, London
 North Hampshire Hospital, Basingstoke
 Northampton General Hospital, Northampton
 Northwick Park Hospital, Harrow
 Royal Bolton Hospital, Bolton
 Tameside General Hospital, Ashton-under-Lyne

Returned all three cards. Returned two cards. Returned one card.

New study coming soon:

Gastric Banding in Pregnancy

Background:

The impact of obesity on pregnancy is well established; obesity negatively impacts on maternal, fetal and neonatal wellbeing. Laparoscopic Adjustable Gastric Band (LAGB) insertion is the primary surgical method of surgical weight reduction in the UK. LAGB insertion is increasing rapidly both in the private sector and in the NHS, with an estimated 1,700 bands inserted in women under the age of 40 years in 2007. The increase in gastric banding in women of reproductive age has resulted in increasing numbers of pregnancies following gastric banding. Nevertheless, management of pregnancy following gastric band surgery has not been well defined. In most reports, women who conceive following LAGB have the band deflated for the duration of the pregnancy [1] because of concerns regarding hyperemesis and poor nutritional intake. Deflating the gastric band has the adverse effect of excessive weight gain [2] and subsequent pregnancy complications. This study will use UKOSS to describe the epidemiology and management of gastric banding in pregnancy in the UK and use this information to develop future guidelines for optimal management.

Surveillance Period:

November 2011 - October 2012

Case definition:

Any woman with a confirmed ongoing pregnancy following laparoscopic adjustable gastric band surgery.

Research questions:

- What is the incidence of pregnant women with previous gastric band surgery in the UK?
- How are pregnant women who have had gastric band surgery currently managed in the UK?
- What are the medical, obstetric and neonatal outcomes of pregnant women after gastric band surgery?
- What is the weight change in the pregnant women who have had gastric band surgery?

Funding:

This study is funded by North Bristol NHS Trust.

Investigators:

Elinor Medd, Judith Hyde, Mary Lynch, Andrew Johnson, Dimitrios Siassakos, Amanda Jefferys, Tim Draycott, Southmead Hospital, Bristol

References:

1. Weiss, H.G., et al., Pregnancies after adjustable gastric banding. *Obesity surgery*, 2001. **11**(3): p. 303-6.
2. Sheiner, E., et al., Pregnancy outcome in patients following different types of bariatric surgeries. *Obesity surgery*, 2009. **19**(9): p. 1286-92.

More changes to the team!



This month we said goodbye to Dominika Misztela, who has been the UKOSS/ UKNeS Programme Manager for nearly 18 months. Dominika has taken up a new job in Brussels,

working to coordinate Europe-wide clinical trials, so some of you may meet her again in her new role! We are very pleased to welcome in her place Charlotte McClymont, who most recently has been working as a research nurse in cardiovascular medicine, but has been a practising midwife for many years and continues to work on labour ward in her spare time! More from Charlotte next time!



Case report summary for current studies up until 29 September 2011

Disorder	Actual number of reported cases	Data collection forms returned (%)	Number of confirmed cases	Expected number of confirmed cases
Adrenal Tumours	8	5 (63)	3 (60)	10
Amniotic Fluid Embolism*	142	134 (94)	93 (69)	79
Aortic Dissection	12	11 (92)	5 (45)	96
Cardiac Arrest in Pregnancy	9	0 (0)	0 (0)	5
HELLP Syndrome*	53	22 (42)	16 (76)	99
Myeloproliferative Disorders	35	27 (77)	18 (67)	83
Pregnancy in Non-renal Solid Organ Transplant Recipients	99	87 (88)	66 (76)	95
Severe Maternal Sepsis*	128	48 (38)	20 (61)	80
Pituitary Tumours	59	46 (78)	24 (52)	75
Placenta Accreta*	183	150 (82)	131 (88)	200
Pulmonary Vascular Disease	84	72 (86)	30 (42)	46

Funding: *These studies represent independent research commissioned by the National Institute for Health Research (NIHR) under its Programme Grants for Applied Research Programme (Grant Reference Number RP-PG-0608-10038). The views expressed are those of the author(s) and not necessarily those of the NHS, the NIHR or the Department of Health.

Admin team: **01865 289714**

email: UKOSS@npeu.ox.ac.uk web: www.npeu.ox.ac.uk/UKOSS

