



Royal College of
Obstetricians and
Gynaecologists



UK Obstetric Surveillance System



National Perinatal
Epidemiology Unit

Newsletter 24: January 2011

Uterine Compression Sutures for Severe Postpartum Haemorrhage

The results of the uterine compression sutures study have recently been published in *Obstetrics and Gynecology*. More than 200 women were identified who were treated with a uterine compression suture to control postpartum haemorrhage. In a quarter of women (25%, 95% confidence interval 19-31%), the suture did not adequately control haemorrhage and the woman went on to have a hysterectomy. There were no significant differences in failure rates between different sutures types, for example B-Lynch sutures, modified B-Lynch sutures (Hayman or similar) and other suture techniques. Women were more likely to have a hysterectomy if they were older (aOR 2.77, 95%CI 1.13-6.77), multiparous (aOR 2.83, 95%CI 1.00-8.00), of non-managerial socioeconomic status (aOR 3.54, 95%CI 1.20-10.4) or had a vaginal delivery (aOR 6.08, 95%CI 1.33-27.8).

A prolonged delay of two to six hours between delivery and uterine compression suture was independently associated with a fourfold increase in the odds of hysterectomy (aOR 4.60, 95%CI 1.62-13.1). These results emphasise the importance of a careful evaluation of blood loss after delivery to avoid any prolonged delay in recognition of hemorrhage.

Reference:

Uterine compression sutures for the management of severe postpartum haemorrhage

Kayem, G et al. (on behalf of UKOSS). *Obstetrics & Gynecology* 2011; 117(1):14-20.

Case report summary for current studies up until 17 January 2011

Disorder	Actual number of reported cases	Data collection forms returned (%)	Number of confirmed cases	Expected number of confirmed cases
Amniotic Fluid Embolism	124	117 (94)	80	70
Aortic Dissection	11	8 (73)	3	60
Severe Obstetric Cholestasis	353	227 (64)	153	180
Myeloproliferative Disorders	15	11 (73)	7	46
Pregnancy in Non-renal Solid Organ Transplant Recipients	79	67 (88)	53	80
Pituitary Tumours	29	16 (55)	6	38
Placenta Accreta	98	48 (49)	40	100
Pulmonary Vascular Disease	75	62 (83)	27	41
Sickle Cell Disease	90	53 (59)	41	207

Thanks to the following hospitals who have returned cards for the last three months:

Aberdeen Maternity Hospital, Aberdeen
 Airedale General Hospital, Keighley
 Alexandra Hospital, Redditch
 Altnagalvin Area Hospital, Londonderry
 Antrim Hospital, Antrim
 Arrowe Park Hospital, Wirral
 Ayrshire Maternity Unit, Kilmarnock
 Barnet and Chase Farm Hospitals NHS Trust, Enfield
 Bamsley District General Hospital, Bamsley
 Basildon Hospital, Basildon
 Bassetlaw District General Hospital, Worksop
 Birmingham City Hospital, Birmingham
 Birmingham Heartlands Hospital, Birmingham
 Birmingham Women's Hospital, Birmingham
 Borders General Hospital, Melrose
 Bronglais Hospital, Aberystwyth
 Causeway Hospital, Coleraine
 Chelsea & Westminster Hospital, London
 Cheltenham General Hospital, Cheltenham
 Chesterfield & North Derbyshire Royal Hospital, Chesterfield
 Countess of Chester Hospital, Chester
 Croydon University Hospital, Thornton Heath
 Cumberland Infirmary, Carlisle
 Daisy Hill Hospital, Newry
 Darent Valley Hospital, Dartford
 Darlington Memorial Hospital, Darlington
 Derby Hospitals NHS Foundation Trust, Derby
 Derriford Hospital, Plymouth
 Dewsbury and District Hospital, Dewsbury
 Diana Princess of Wales Hospital, Grimsby
 Doncaster Royal Infirmary, Doncaster
 Dorset County Hospital, Dorchester
 Dr Gray's Hospital, Elgin
 Dumfries & Galloway Royal Infirmary, Dumfries
 Ealing Hospital, London
 Erne Hospital, Enniskillen
 Fairfield General Hospital, Bury
 Forth Park Hospital, Kirkcaldy
 Friarage Hospital, Northallerton
 Frimley Park Hospital, Camberley
 George Eliot Hospital, Nuneaton
 Glan Clwyd District General Hospital, Rhyl
 Gloucestershire Royal Hospital, Gloucester
 Good Hope Hospital, Sutton Coldfield
 Harrogate District Hospital, Harrogate
 Hereford County Hospital, Hereford
 Hillingdon Hospital, Uxbridge
 Homerton University Hospital, London
 Hope Hospital, Manchester
 Hull Royal Infirmary, Hull
 Ipswich Hospital, Ipswich
 James Cook University Hospital, Middlesbrough
 James Paget Hospital, Great Yarmouth
 Jersey General Hospital, St Helier
 John Radcliffe Hospital, Oxford
 Kettering General Hospital, Kettering
 King George Hospital, Ilford
 King's Mill Hospital, Sutton in Ashfield
 Lagan Valley Hospital, Lisburn
 Leighton Hospital, Crewe
 Lincoln County Hospital, Lincoln
 Lister Hospital, Stevenage
 Luton & Dunstable Hospital, Luton
 Macclesfield District General Hospital, Macclesfield
 Maidstone General Hospital, Maidstone
 Mater Infirmorum Hospital, Belfast
 Medway Maritime Hospital, Gillingham
 Milton Keynes General Hospital, Milton Keynes
 Nevill Hall Hospital, Abergavenny
 New Cross Hospital, Wolverhampton
 Newham General Hospital, London
 Ninewells Hospital & Medical School, Dundee
 North Devon District Hospital, Barnstaple
 North Manchester General Hospital, Manchester
 Northwick Park Hospital, Harrow
 Nottingham University Hospitals NHS Trust, Nottingham
 Pembury Hospital, Tunbridge Wells
 Peterborough City Hospital, Peterborough
 Pilgrim Hospital, Boston
 Prince Charles Hospital, Methyr Tydfil
 Princess Alexandra Hospital, Harlow
 Princess Anne Hospital, Southampton
 Princess Elizabeth Hospital, St Martins
 Princess of Wales Hospital, Bridgend
 Princess Royal Maternity Hospital, Glasgow
 Princess Royal University Hospital, Orpington
 Queen Alexandra Hospital, Portsmouth
 Queen Elizabeth Hospital, Gateshead
 Queen Elizabeth Hospital, Kings Lynn
 Queen Elizabeth Hospital, London
 Queen Elizabeth the Queen Mother Hospital, Margate
 Queen Mary's Hospital, Sidcup
 Queen's Hospital, Burton upon Trent
 Raigmore Hospital, Inverness
 Rochdale Infirmary, Rochdale
 Rotherham District General Hospital, Rotherham
 Royal Albert Edward Infirmary, Wigan
 Royal Alexandra Hospital, Paisley
 Royal Berkshire Hospital, Reading
 Royal Bolton Hospital, Bolton
 Royal Cornwall Hospital, Truro
 Royal Devon & Exeter Hospital, Exeter
 Royal Free Hospital, London
 Royal Glamorgan Hospital, Llantrisant
 Royal Hampshire County Hospital, Winchester
 Royal Jubilee Maternity Service, Belfast
 Royal Lancaster Infirmary, Lancaster
 Royal London Hospital, London
 Royal Shrewsbury Hospital, Shrewsbury
 Royal Surrey County Hospital, Guildford
 Royal Sussex County Hospital, Brighton
 Royal United Hospital, Bath
 Russells Hall Hospital, Dudley
 Salisbury District Hospital, Salisbury
 Sandwell District General Hospital, West Bromwich
 Scarborough Hospital, Scarborough
 Scunthorpe General Hospital, Scunthorpe
 Sharoe Green Unit, Preston
 Simpson Centre for Reproductive Health, Edinburgh
 Singleton Hospital, Swansea
 South Tyneside District Hospital, South Shields
 Southend Hospital, Westcliff-on-Sea
 Southern General Hospital, Glasgow
 Southport & Ormskirk Hospital NHS Trust, Ormskirk
 St George's Hospital, London
 St Helier Hospital, Carshalton
 St James's University Hospital, Leeds
 St John's Unit at Howden, Livingston
 St Mary's Hospital, London
 St Mary's Hospital, Manchester
 St Mary's Hospital, Newport
 St Michael's Hospital, Bristol
 St Peter's Hospital, Chertsey
 St Richard's Hospital, Chichester
 Staffordshire General Hospital, Stafford
 Stepping Hill Hospital, Stockport
 Stirling Royal Infirmary, Stirling
 Stoke Mandeville Hospital, Aylesbury
 Tameside General Hospital, Ashton-under-Lyne
 Taunton and Somerset Hospital, Taunton
 The Great Western Hospital, Swindon
 The Jessop Wing, Sheffield
 The Portland Hospital, London
 Torbay Hospital, Torquay
 Ulster Hospital, Belfast
 University Hospital Lewisham, London
 University Hospital of Coventry & Warwickshire, Coventry
 University Hospital of North Durham, Durham
 University Hospital of North Tees, Stockton-on-Tees
 Victoria Hospital, Blackpool
 Wansbeck General Hospital, Ashington
 Warrington Hospital, Warrington
 Warwick Hospital, Warwick
 West Cumberland Hospital, Whitehaven
 West Suffolk Hospital, Bury St Edmunds
 West Wales General Hospital, Carmarthen
 Western Isles Hospital, Stornaway
 Whipps Cross University Trust Hospital, London
 William Harvey Hospital, Ashford
 Withybush Hospital, Haverfordwest
 Worcestershire Royal Hospital, Worcester
 Worthing Hospital, Worthing
 Wrexham Maelor Hospital, Wrexham
 Wythenshawe Hospital, Manchester
 Yeovil Women's Hospital, Yeovil
 Ysbyty Gwynedd District General Hospital, Bangor
 Bradford Royal Infirmary, Bradford
 Caithness General Hospital, Wick
 Calderdale Royal Hospital, Halifax
 Colchester General Hospital, Colchester
 Conquest Hospital, St Leonards-on-Sea
 Craigavon Area Hospital, Portadown
 East Surrey Hospital, Redhill
 Eastbourne District General Hospital, Eastbourne
 Epsom General Hospital, Epsom
 Furness General Hospital, Barrow-in-Furness
 Hinchingsbrooke Hospital, Huntingdon
 King's College Hospital, London
 Leeds General Infirmary, Leeds
 Leicester General Hospital, Leicester
 Manor Hospital, Walsall
 Nobles Hospital, Douglas
 North Hampshire Hospital, Basingstoke
 North Middlesex Hospital, London
 Northampton General Hospital, Northampton
 Pontefract General Infirmary, Pontefract
 Princess Royal Hospital, Haywards Heath
 Queen Charlotte's and Chelsea Hospital, London
 Queen Elizabeth II Hospital, Welwyn Garden City
 Queen's Hospital, Romford
 Rosie Maternity Hospital, Cambridge
 Royal Gwent Hospital, Newport
 Royal Oldham Hospital, Oldham
 Royal Victoria Infirmary, Newcastle-upon-Tyne
 Southmead Hospital, Bristol
 St John's Hospital, Chelmsford
 University Hospital of North Staffordshire, Stoke on Trent
 University Hospital of Wales, Cardiff
 Watford General Hospital, Watford
 West Middlesex University Hospital, Isleworth
 Wexham Park Hospital, Slough
 Whittington Hospital, London
 Wishaw General Hospital, Wishaw
 York Hospital, York
 Bedford Hospital, Bedford
 Burnley General Hospital, Burnley
 City Hospitals Sunderland NHS Trust, Sunderland
 Guy's and St Thomas' Hospital, London
 Liverpool Women's Hospital, Liverpool
 Norfolk & Norwich University Hospital, Norwich
 Poole Hospital, Poole
 University College Hospital, London
 Whiston Hospital, Prescot

Returned all three cards. Returned two cards. Returned one card.

Goodbye to Carole Harris:



We're sure you would like to join us in saying goodbye to Carole Harris, who has left UKOSS after nearly seven years. Carole will be pursuing new avenues, including spending more time with her family and devoting herself to her career as an alternative therapist, which she has practised for many years alongside her administrative work. Carole has been working for UKOSS as the administrator since 2004 (yes, since before it even started!), and we're sure many of you will have emailed or spoken to her over the last few years. Behind the scenes Carole has become adept at tracking down missing cards and forms and even guessing email addresses when all other methods of communication fail! As well as a skilled detective, Carole has also become a cipher expert, decoding writing on UKOSS

forms where everyone else has been unsuccessful. Carole has in her head an amazing knowledge of all those of you who have contributed to UKOSS, the cases you have reported and any problems with returning data, and we hope you will forgive us in the future if we don't always remember everything she did!

Perhaps most importantly, one of Carole's key roles has been to award the quarterly boxes of chocolates to be sent out with each newsletter. Rest assured that the remainder of the team, Dominika Misztela, Alex Bellenger and Jane Forrester-Barker will continue this important task (as well as all the rest of the UKOSS administration).

We would like to thank Carole for all her hard work for UKOSS and wish her all the best for the future.

Recent publications:

In addition to the publication on **Uterine compression sutures for postpartum haemorrhage** featured on the front page, the comparison of **AH1N1v infection in pregnancy** in the UK, Australia and New Zealand has been published on BJOG online.

The links to these publications are featured on the UKOSS website. If you would like receive printed copies, please email us and we will be happy to send them to you.

MBRRACE-UK

Mothers and Babies: Reducing Risk through Audit and Confidential Enquiries

MBRRACE-UK is the new national programme of maternal, perinatal and infant audit and confidential enquiry, continuing and expanding the work previously undertaken by the Centre for Maternal and Child Enquiries (CMACE, formerly CEMACH) from April 2011. The world-renowned UK Confidential Enquiry programme has led to huge improvements in the health and care of women and their babies over its almost 60 year history; this new programme will continue and expand the work investigating deaths to include women and their babies who are severely ill but survive, thus helping to identify ways in which we can prevent both illness and deaths in the future. This new work will build on existing research and surveillance programmes, including UKOSS

More information coming soon and on the website www.npeu.ox.ac.uk/mbrpace-uk.



Reminder: Data Collection Form Completion



Dear UKOSS reporters!

Please can you make sure you complete **ALL** boxes on the UKOSS Data Collection Forms, even if you don't know

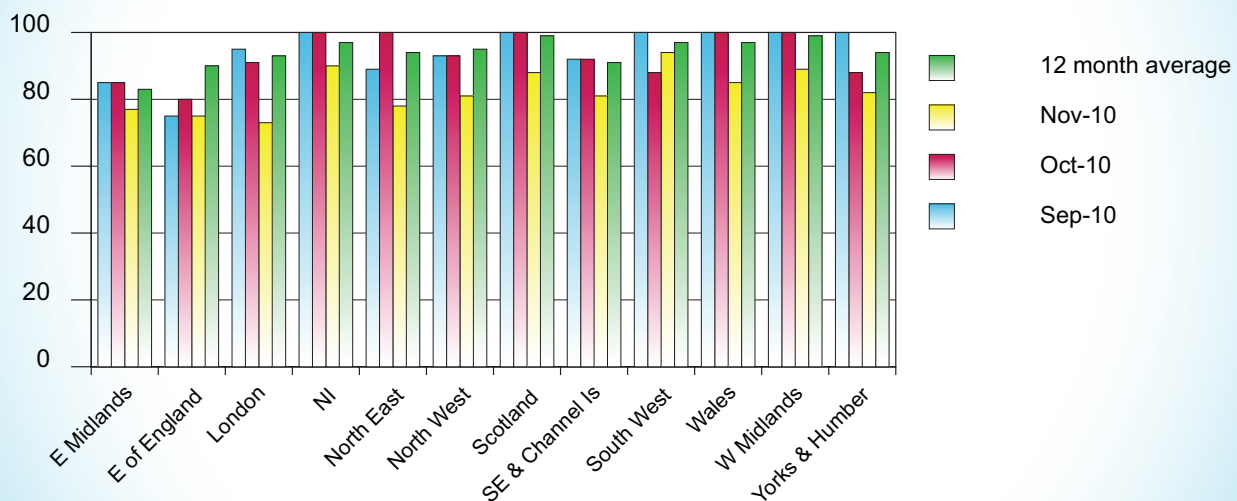
the answer, otherwise our database will automatically send queries to you! We realise you won't always have all the answers and we don't want to nag!

Thank you.



UKOSS Regional Card Return Rates

Card return rates September 2010 - November 2010



Don't forget:

We are still collecting information on cases of Myeloproliferative Disorders in pregnancy. Further details of the case definition are on

<https://www.npeu.ox.ac.uk/ukoss/current-surveillance/mpd>

Admin team: **01865 289714**
email: **UKOSS@npeu.ox.ac.uk**

01865 617764
web: **www.npeu.ox.ac.uk/UKOSS**

01865 617774

