



Royal College of
Obstetricians and
Gynaecologists



UK Obstetric Surveillance System



National Perinatal
Epidemiology Unit

Newsletter 23: October 2010

AH1N1v influenza in pregnancy: A comparison with Australia/ New Zealand

A comparison of data from UKOSS with data from our sister organisation in Australia/New Zealand, the Australasian Maternity Outcomes Surveillance System (AMOSS), shows several important differences between women admitted to intensive care units (ICUs) with AH1N1v influenza in the UK and those admitted in Australia and New Zealand.

The key differences were:

- Australia and New Zealand experienced an estimated 7 admissions to ICU with AH1N1v infection per 10,000 maternities. At the peak of admissions in the UK, the rate of ITU admission was lower, with an estimated 3 women admitted per 10,000 maternities.
- This difference may reflect successful public health interventions in the UK, including earlier and more comprehensive use of antivirals, introduced after the severity and clinical course of the disease in pregnancy became clear from the Southern hemisphere experience.
- Different ethnic minority populations may account for much of the difference in ITU admission rates, notably the 30 times greater risk of admission among indigenous Australian/New Zealander pregnant women compared to white women in the UK.
- These findings have clear implications for the planning of services in Australia and New Zealand in both the forthcoming influenza season and for future pandemics.
- This analysis did not suggest that there was any change in disease severity between the first wave and second wave of the pandemic. However, the study reiterates the overall severity of AH1N1v influenza infection in pregnancy and emphasises the importance of an ongoing immunisation programme in pregnant women in both Northern and Southern hemispheres.

Case report summary for current studies to 8th September 2010

Disorder	Actual number of reported cases	Data collection forms returned (%)	Number of confirmed cases	Expected number of confirmed cases
Amniotic Fluid Embolism	119	110 (92)	76	67
Aortic Dissection	6	4 (67)	1	49
Severe Obstetric Cholestasis	94	49 (52)	18	98
Myeloproliferative Disorders	8	5 (63)	5	34
Pregnancy in Non-renal Solid Organ Transplant Recipients	75	65 (87)	51	75
Pituitary Tumours	18	8 (44)	2	26
Placenta Accreta	38	17 (45)	15	54
Pulmonary Vascular Disease	69	59 (86)	26	39
Sickle Cell Disease	48	26 (54)	22	150

Thanks to the following hospitals who have returned cards for the last three months:

Aberdeen Maternity Hospital, Aberdeen
 Airedale General Hospital, Keighley
 Alexandra Hospital, Redditch
 Altnagalvin Area Hospital, Londonderry
 Antrim Hospital, Antrim
 Arrowe Park Hospital, Wirral
 Ayrshire Maternity Unit, Kilmarnock
 Barnet and Chase Farm Hospitals NHS Trust, Enfield
 Bamsley District General Hospital, Bamsley
 Basildon Hospital, Basildon
 Bassetlaw District General Hospital, Worksop
 Bedford Hospital, Bedford
 Birmingham Heartlands Hospital, Birmingham
 Birmingham Women's Hospital, Birmingham
 Borders General Hospital, Melrose
 Bradford Royal Infirmary, Bradford
 Bronglais Hospital, Aberystwyth
 Burnley General Hospital, Burnley
 Caithness General Hospital, Wick
 Calderdale Royal Hospital, Halifax
 Causeway Hospital, Coleraine
 Chelsea & Westminster Hospital, London
 Cheltenham General Hospital, Cheltenham
 Chesterfield & North Derbyshire Royal Hospital, Chesterfield
 Colchester General Hospital, Colchester
 Countess of Chester Hospital, Chester
 Cumberland Infirmary, Carlisle
 Daisy Hill Hospital, Newry
 Darent Valley Hospital, Dartford
 Darlington Memorial Hospital, Darlington
 Derby Hospitals NHS Foundation Trust, Derby
 Derriford Hospital, Plymouth
 Diana Princess of Wales Hospital, Grimsby
 Doncaster Royal Infirmary, Doncaster
 Dorset County Hospital, Dorchester
 Dr Gray's Hospital, Elgin
 Dumfries & Galloway Royal Infirmary, Dumfries
 Ealing Hospital, London
 Eastbourne District General Hospital, Eastbourne
 Epsom General Hospital, Epsom
 Erne Hospital, Enniskillen
 Fairfield General Hospital, Bury
 Forth Park Hospital, Kirkcaldy
 Friarage Hospital, Northallerton
 Frimley Park Hospital, Camberley
 Furness General Hospital, Barrow-in-Furness
 George Eliot Hospital, Nuneaton
 Glan Clwyd District General Hospital, Rhyl
 Gloucestershire Royal Hospital, Gloucester
 Good Hope Hospital, Sutton Coldfield
 Guy's and St Thomas's Hospital, London
 Harrogate District Hospital, Harrogate
 Hereford County Hospital, Hereford
 Hillingdon Hospital, Uxbridge
 Hinchingsbrooke Hospital, Huntingdon
 Homerton Hospital, London
 Hope Hospital, Manchester
 Horton Hospital, Banbury
 Hull Royal Infirmary, Hull
 Ipswich Hospital, Ipswich
 James Cook University Hospital, Middlesbrough
 James Paget Hospital, Great Yarmouth
 Jersey General Hospital, St Helier
 John Radcliffe Hospital, Oxford
 Kettering General Hospital, Kettering
 King George Hospital, Ilford
 King's College Hospital, London
 King's Mill Hospital, Sutton in Ashfield
 Kingston Hospital, Kingston upon Thames
 Leeds General Infirmary, Leeds
 Leicester General Hospital, Leicester
 Leighton Hospital, Crewe
 Lincoln County Hospital, Lincoln
 Lister Hospital, Stevenage
 Liverpool Women's Hospital, Liverpool
 Maidstone General Hospital, Maidstone
 Manor Hospital, Walsall
 Mater Infirmorum Hospital, Belfast
 Mayday University Hospital, Thornton Heath
 Medway Maritime Hospital, Gillingham
 Nevill Hall Hospital, Abergavenny
 New Cross Hospital, Wolverhampton
 Newham General Hospital, London
 Ninewells Hospital & Medical School, Dundee
 Nobles Hospital, Douglas
 Norfolk & Norwich University Hospital, Norwich
 North Devon District Hospital, Barnstaple
 North Manchester General Hospital, Manchester
 North Middlesex Hospital, London
 Northampton General Hospital, Northampton
 Northwick Park Hospital, Harrow
 Pembury Hospital, Tunbridge Wells
 Pilgrim Hospital, Boston
 Pontefract General Infirmary, Pontefract
 Poole Hospital, Poole
 Prince Charles Hospital, Methyr Tydfil
 Princess Alexandra Hospital, Harlow
 Princess Anne Hospital, Southampton
 Princess Elizabeth Hospital, St Martins
 Princess Royal University Hospital, Orpington
 Queen Alexandra Hospital, Portsmouth
 Queen Charlotte's and Chelsea Hospital, London
 Queen Elizabeth Hospital, Gateshead
 Queen Elizabeth Hospital, Kings Lynn
 Queen Elizabeth the Queen Mother Hospital, Margate
 Queen's Hospital, Burton upon Trent
 Queen's Hospital, Romford
 Raigmore Hospital, Inverness
 Rosie Maternity Hospital, Cambridge
 Rotherham District General Hospital, Rotherham
 Royal Albert Edward Infirmary, Wigan
 Royal Alexandra Hospital, Paisley
 Royal Blackburn Hospital, Blackburn
 Royal Bolton Hospital, Bolton
 Royal Cornwall Hospital, Truro
 Royal Devon & Exeter Hospital, Exeter
 Royal Glamorgan Hospital, Llantrisant
 Royal Gwent Hospital, Newport
 Royal Hampshire County Hospital, Winchester
 Royal Jubilee Maternity Service, Belfast
 Royal Lancaster Infirmary, Lancaster
 Royal London Hospital, London
 Royal Oldham Hospital, Oldham
 Royal Shrewsbury Hospital, Shrewsbury
 Royal Surrey County Hospital, Guildford
 Royal Sussex County Hospital, Brighton
 Royal United Hospital, Bath
 Russells Hall Hospital, Dudley
 Salisbury District Hospital, Salisbury
 Sandwell District General Hospital, West Bromwich
 Scarborough Hospital, Scarborough
 Scunthorpe General Hospital, Scunthorpe
 Simpson Centre for Reproductive Health, Edinburgh
 Singleton Hospital, Swansea
 South Tyneside District Hospital, South Shields
 Southend Hospital, Westcliff-on-Sea
 Southmead Hospital, Bristol
 Southport & Ormskirk Hospital NHS Trust, Ormskirk
 St James's University Hospital, Leeds
 St John's Hospital, Chelmsford
 St John's Unit at Howden, Livingston
 St Mary's Hospital, London
 St Mary's Hospital, Manchester
 St Mary's Hospital, Newport
 St Michael's Hospital, Bristol
 St Peter's Hospital, Chertsey
 Staffordshire General Hospital, Stafford
 Stepping Hill Hospital, Stockport
 Stirling Royal Infirmary, Stirling
 Stoke Mandeville Hospital, Aylesbury
 Tameside General Hospital, Ashton-under-Lyne
 Taunton and Somerset Hospital, Taunton
 The Great Western Hospital, Swindon
 The Jessop Wing, Sheffield
 The Portland Hospital, London
 Torbay Hospital, Torquay
 Ulster Hospital, Belfast
 University College Hospital, London
 University Hospital Lewisham, London
 University Hospital of Coventry & Warwickshire, Coventry
 University Hospital of North Durham, Durham
 University Hospital of North Staffordshire, Stoke on Trent
 University Hospital of North Tees, Stockton-on-Tees
 University Hospital of Wales, Cardiff
 Victoria Hospital, Blackpool
 Wansbeck General Hospital, Ashington
 Warrington Hospital, Warrington
 Warwick Hospital, Warwick
 Watford General Hospital, Watford
 West Cumberland Hospital, Whitehaven
 West Middlesex University Hospital, Isleworth
 West Suffolk Hospital, Bury St Edmunds
 West Wales General Hospital, Carmarthen
 Western Isles Hospital, Stornaway
 Wexham Park Hospital, Slough
 Whipps Cross University Trust Hospital, London
 Whiston Hospital, Prescot
 Whittington Hospital, London
 William Harvey Hospital, Ashford
 Wishaw General Hospital, Wishaw
 Withybush Hospital, Haverfordwest
 Worcestershire Royal Hospital, Worcester
 Worthing Hospital, Worthing
 Wrexham Maelor Hospital, Wrexham
 Wycombe General Hospital, High Wycombe
 Wythenshawe Hospital, Manchester
 Yeovil Women's Hospital, Yeovil
 Ysbyty Gwynedd District General Hospital, Bangor
 Birmingham City Hospital, Birmingham
 Conquest Hospital, St Leonards-on-Sea
 East Surrey Hospital, Redhill
 Lagan Valley Hospital, Lisburn
 Macclesfield District General Hospital, Macclesfield
 Milton Keynes General Hospital, Milton Keynes
 Nottingham University Hospitals NHS Trust, Nottingham
 Peterborough Maternity Unit, Peterborough
 Princess of Wales Hospital, Bridgend
 Princess Royal Maternity Hospital, Glasgow
 Queen Elizabeth Hospital, London
 Queen Elizabeth II Hospital, Welwyn Garden City
 Queen Mary's Hospital, Sidcup
 Royal Berkshire Hospital, Reading
 Royal Free Hospital, London
 Royal Victoria Infirmary, Newcastle-upon-Tyne
 Sharoe Green Unit, Preston
 Southern General Hospital, Glasgow
 St George's Hospital, London
 St Helier Hospital, Carshalton
 St Richard's Hospital, Chichester
 York Hospital, York
 Craigavon Area Hospital, Portadown
 Dewsbury and District Hospital, Dewsbury
 Luton & Dunstable Hospital, Luton
 North Hampshire Hospital, Basingstoke
 Princess Royal Hospital, Haywards Heath
 Rochdale Infirmary, Rochdale

Returned all three cards. Returned two cards. Returned one card.

Recent publications:

Full results of three UKOSS studies **Extreme obesity in pregnancy in the UK** (Obstet Gynecol. 2010;115(5): 989-997), **Amniotic fluid embolism in the UK** (Obstet Gynecol. 2010;115(5):910-917) and **AH1N1v in pregnancy** (Health Technology Assessment 2010; Vol. 14: No. 34, p. 101-182) have been published.

UKOSS data on peripartum hysterectomy have also been used to investigate whether **the Robson Ten Group Classification System (TGCS)** can be used to audit severe maternal morbidity. (Midwifery. 2010).

In addition, data gathered on **adoption of newer surgical strategies for gastroschisis and their outcomes** using UKOSS and a complementary surveillance system for surgically managed congenital anomalies, BAPS-CASS, is now available (J Pediatr Surg. 2010;45(9):1808-1816).

The links to these publications are featured on the UKOSS website. If you would like receive printed copies, please email us and we will be happy to send them to you.

Spotlight on the UKOSS Steering Committee: Appointment of new Committee Chair and Members

Following a voting meeting on the 14 May 2010, Professor Derek Tuffnell (Professor of Obstetrics & Gynaecology, Bradford Teaching Hospitals NHS Foundation Trust) was appointed as the new Chair of the UKOSS Steering Committee. He is replacing Dr Cathy Nelson-Piercy (Guy's and St Thomas' NHS Foundation Trust and Imperial College Healthcare NHS Trust). The NPEU, UKOSS and the UKOSS Steering Committee would like to thank Dr Nelson-Piercy for her time and invaluable contribution to UKOSS.

Professor Tuffnell will chair the committee for the next 3 years and will be supported by Mervi Jokinen [The Royal College of Midwives (RCM)], who remains in her function as the Vice-Chair. The Committee also welcomed Mr Philip Banfield, Mr Kim Hinshaw and Dr Lucy Mackillop as new members. The current members of the committee are:



(Pictured, left to right) Lucy Mackillop (Obstetric Physician), Nuala Luca (Obstetric Anaesthetist), Jenny Furniss (Lay Representative), Jenny Kurinczuk (Clinical Epidemiologist), Tim Overton (Obstetrician), Marian Knight (Head of UKOSS), Cynthia Clarkson (National Childbirth Trust Representative), Leslie Marr (NHS Quality Improvement Scotland), Derek Tuffnell (Chair, Obstetrician), Mervi Jokinen (Vice-Chair, Royal College of Midwives), Gwyneth Lewis (Department of Health), Philip Banfield (Obstetrician).

(Not pictured): Maggie Blott (RCOG), Peter Brocklehurst (Clinical Epidemiologist), Jean Chapple (FPH), Shona Golightly (CMACE), Ian Greer (CMACE), Kim Hinshaw (Obstetrician), Christopher Lennox (NHS Quality Improvement Scotland), Richard Pebody (HPA), Felicity Plaat (Obstetric Anaesthetist), James Walker (NPSA).



Reminder: Pituitary tumours case definition

We are collecting details of all women with a pituitary tumour in pregnancy **including women diagnosed prior to pregnancy** or diagnosed in pregnancy with a macroprolactinoma, Cushing's disease, acromegaly, thyrotrophinomas or non-functioning pituitary tumours. Note that women with a microprolactinoma (a prolactin-secreting tumour less than 1.0cm diameter) are excluded, but if you don't know the size of the prolactinoma, please report the case anyway.
Thank you!

Applications sought for new UKOSS Steering Committee: Midwife member

We have a vacancy for a midwife to join the UKOSS Steering Committee. The committee meets three times per year and its main roles are to consider applications for inclusion of new studies on the UKOSS programme and to monitor the progress of ongoing studies. The positions are not remunerated but meetings may be considered as part of continuing professional development.

Interested applicants are requested to submit a two page CV and a short letter stating why they would like to undertake the role to Dr Marian Knight (marian.knight@npeu.ox.ac.uk)/ UKOSS (ukoss@npeu.ox.ac.uk). Applicants will be assessed on the basis of the following criteria:

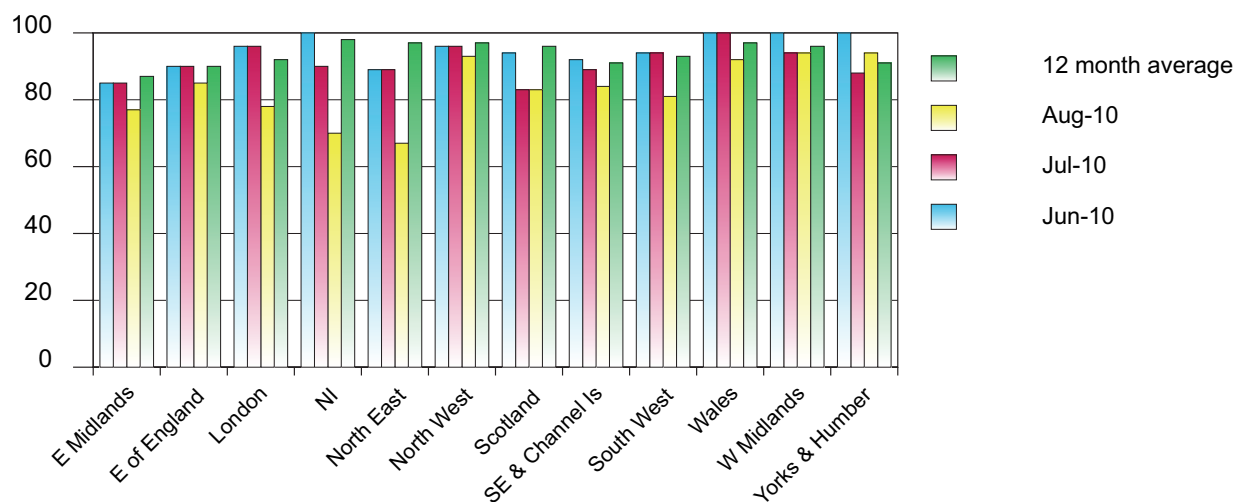
1. evidence of contribution to and interest in UKOSS;
2. evidence of forging links within and out with ones own professional group;
3. research or audit experience in obstetrics/ maternity care; and
4. experience of committee work

The closing date for applications is the **10 December 2010**.

Further details can be obtained from Dr Marian Knight (marian.knight@npeu.ox.ac.uk).

UKOSS Regional Card Return Rates

Card return rates June 2010 - August 2010



Marian Knight: 01865 289727
Carole Harris: 01865 289714

email: UKOSS@npeu.ox.ac.uk
web: www.npeu.ox.ac.uk/UKOSS

