

Autumn Newsletter

Summer sunshine (did you have any?) is well and truly behind us, so with Autumn, and Winter approaching, we're looking forward to pumpkins, bonfires, fireworks (and even Christmas?!).

In the UKMidSS office we're keeping warm by keeping extra busy... this month we start our fifth national study, the **Diabetes Study**; we're putting all the preparations in place for our virtual **Study Day** in December; we're planning a new national **survey of practice about postnatal care** in midwifery units; and we have a great **PhD opportunity** to unveil. Read on to find out more!

UKMidSS Diabetes Study

This new study aims to investigate outcomes in women with diabetes (gestational or pre-existing) who are admitted to midwifery units for labour care. As usual, we're collecting data in all midwifery units, alongside and freestanding.

When does the study start?

It's started already! **In October** you should be keeping an eye out for 'cases'. On **1st November** you will receive your first monthly report request email, asking for your figures for October. The study will continue for 12 calendar months, until **30th September 2022**.

Remind me, what's a case?

Any woman with diabetes (gestational or pre-existing) who is admitted to a midwifery unit for labour care.

We don't have any women with diabetes in our unit so will we have anything to do?

We know that not all midwifery units routinely admit women with diabetes for labour care, but it's really important that we capture **all admissions** that fit our definition. That way we can report how often it's happening, what the characteristics of those women are and how they get on in labour and birth. So, even if this doesn't happen often, keep an eye out for women with diabetes admitted to your midwifery unit 'outside guidelines' or because of obstetric unit capacity.

We also know that some units never admit women with diabetes for labour care. So that we have a complete picture, **we still need to hear from you every month** with your overall admission and births figures, and a 'nil return' for cases.

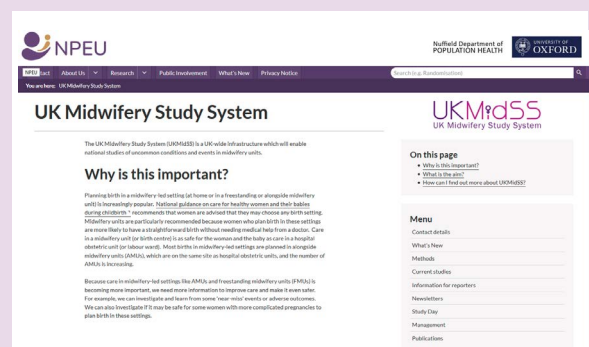
Our unit is closed at the moment - what should we do?

We are updating the monthly reporting form so that you only need to enter data about cases, admissions and births if your unit was open, for at least part of the month. If your unit was closed to admissions for the whole month you should indicate that in the form and you won't have to report any other figures.

I need more information – help!

All the information you need for the new study is available on our **website**. Here you'll find:

cont...



Study day - registration now open!

We are really looking forward to virtually meeting you at our UKMidSS Study day on 8th December.

Our exciting programme includes updates and results from UKMidSS studies, and some great speakers including:

Jacqueline Dunkley-Bent, Chief Midwifery Officer, NHS England

Zenab Barry, Chair of National Maternity Voices

Benash Nazmeen, Specialist Cultural Liaison Midwife, Bolton NHS Foundation Trust

Nicki Burnett, Chair of Kernow Maternity Voices Partnership

Julia Sanders, Professor of Clinical Nursing & Midwifery, Cardiff University and UKMidSS Steering Group member



For the first time we also have a poster session, with submissions from UKMidSS reporters (see below).

If you're are not able to attend on the day, or for the whole day, by registering you will be able to access the recordings for a month after the event.

This year, there is a small fee of £10 to contribute towards the extra costs associated with holding the event online. We absolutely **do not** want the registration fee to be a barrier to any UKMidSS reporters who would otherwise be able to attend. If this is the case for you, please let us know and we will pass your request for a fee waiver to the Head of UKMidSS for consideration.

You should have now received a link to register for our study day. We recommend that you use Chrome or Firefox to access the booking website, as some reporters are experiencing problems with Explorer! If you haven't received an email with the link to the study day booking page, please get in touch with us by emailing UKMidSS_events@ndph.ox.ac.uk!

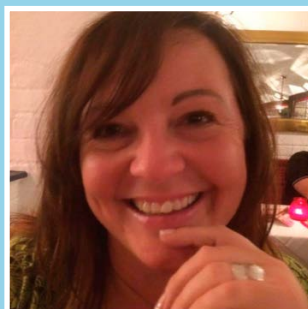
Shortlisted poster abstracts

The theme of our Study Day poster session will be "Positive practice points from the pandemic". The four abstracts selected for presentation were submitted by: **Maryanne Bray**, The Midwifery Led Birth Unit, Cardiff; **Theresa Gnani**, St Michael's Midwifery Unit, Bristol; **Katherine Robinson**, The Home from Home Unit, Belfast; and **Laura Walton**, Oasis Birth Centre, Orpington. We are very excited to hear more about your projects on the day!

A big thank you to everyone who took time to submit an abstract!



Maryanne Bray
Informing informed consent for induction of labour



Teresa Gnani
Introduction of practice education facilitators during the pandemic



Katherine Robinson
The impact of place of birth on outcomes of women suitable for AMLU care who have meconium stained liquor in labour



Laura Walton
Supporting primiparous women with anxiety to birth without fear.

PhD opportunity

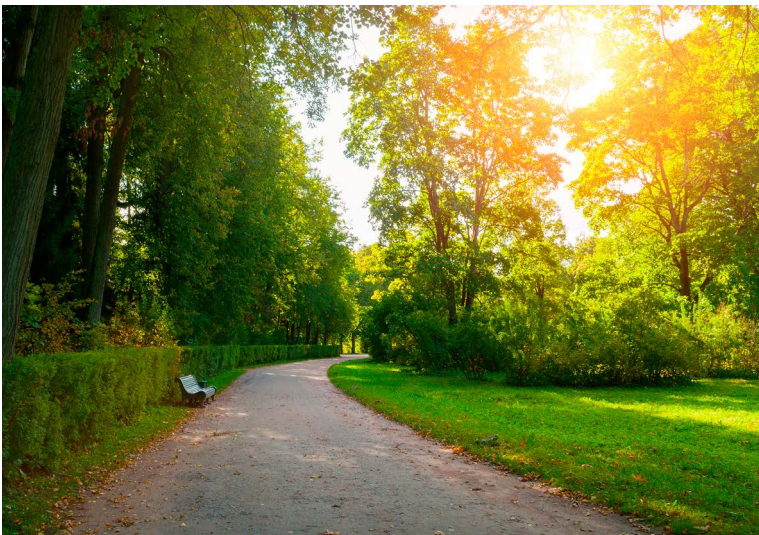
Evidence to improve the labour and birth experience of women with diabetes in the UK

Linked to our UKMidSS Diabetes Study, we're currently advertising an exciting opportunity to undertake a PhD project under the supervision of Rachel Rowe, the Head of UKMidSS, and Jenny Kurinczuk, Director of NPEU. This project follows on from the **James Lind Alliance Diabetes and Pregnancy Priority Setting Partnership (PSP)**, which identified the labour and birth experiences of women with diabetes, and how to enhance choice and shared-decision making for these women, as a priority. It aims to address one or more of the key PSP research questions to provide evidence to improve the labour and birth experiences of women with diabetes in the UK. More information about the project and how to apply is available [here](#). If you are interested and would like more information, please get in touch with Rachel rachel.rowe@npeu.ox.ac.uk.



CPD certificates

If you need a CPD certificate for your revalidation, please get in touch! Being a UKMidSS reporter means that you are contributing to national audit and research. You can drop us an ukmidss@npeu.ox.ac.uk



Update contact details

Is one of your reporters leaving? Is the lead midwife for the MLU going on maternity leave? Is your Head of Midwifery taking a sabbatical? If yes, please do let us know. We rely on updated contact details to communicate news as well as collecting data for our studies.

 [@NPEU_UKMidSS](https://twitter.com/NPEU_UKMidSS)  01865 617823  ukmidss@npeu.ox.ac.uk

