

**Maternal, Newborn and
Infant Clinical Outcome
Review Programme**



MBRRACE-UK Perinatal Mortality Surveillance Report

UK Perinatal Deaths for Births from
January to December 2019

Tables and Figures

October 2021



**Maternal, Newborn and
Infant Clinical Outcome
Review Programme**



**MBRRACE-UK
Perinatal Mortality Surveillance Report**

UK Perinatal Deaths for Births from
January to December 2019

Tables and Figures

Elizabeth S Draper, Ian D Gallimore, Lucy K Smith, Alan C Fenton,
Jennifer J Kurinczuk, Peter W Smith, Thomas Boby, Bradley N Manktelow

on behalf of the MBRRACE-UK collaboration

October 2021

Department of Health Sciences
University of Leicester
George Davies Centre
University Road
Leicester LE1 7RH



UNIVERSITY OF
BIRMINGHAM

The Newcastle upon Tyne Hospitals
NHS Foundation Trust



Funding

The Maternal, Newborn and Infant Clinical Outcome Review Programme, delivered by MBRRACE-UK, is commissioned by the Healthcare Quality Improvement Partnership (HQIP) as part of the National Clinical Audit and Patient Outcomes Programme (NCAPOP). HQIP is led by a consortium of the Academy of Medical Royal Colleges, the Royal College of Nursing, and National Voices. Its aim is to promote quality improvement in patient outcomes. The Clinical Outcome Review Programmes, which encompass confidential enquiries, are designed to help assess the quality of healthcare, and stimulate improvement in safety and effectiveness by systematically enabling clinicians, managers, and policy makers to learn from adverse events and other relevant data. HQIP holds the contract to commission, manage, and develop the National Clinical Audit and Patient Outcomes Programme (NCAPOP), comprising around 40 projects covering care provided to people with a wide range of medical, surgical and mental health conditions. The Maternal, Newborn and Infant Clinical Outcome Review Programme is funded by NHS England, NHS Wales, the Health and Social Care division of the Scottish Government, the Northern Ireland Department of Health, and the States of Jersey, Guernsey, and the Isle of Man.

More details can be found at: www.hqip.org.uk/national-programmes.

Design by: Ian Gallimore, Frances Mielewczyk, Andy Kirk and Sarah Chamberlain

This report should be cited as:

Draper ES, Gallimore ID, Smith LK, Fenton AC, Kurinczuk JJ, Smith PW, Boby T, Manktelow BN, on behalf of the MBRRACE-UK Collaboration. MBRRACE-UK Perinatal Mortality Surveillance Report, UK Perinatal Deaths for Births from January to December 2019: Tables and Figures. Leicester: The Infant Mortality and Morbidity Studies, Department of Health Sciences, University of Leicester. 2021.

ISBN: 978-1-9999353-7-5

Published by: The Infant Mortality and Morbidity Studies

© 2021 Healthcare Quality and Improvement Partnership

Definitions used in this document

Late fetal loss	A baby born between 22 ⁺⁰ and 23 ⁺⁶ weeks gestational age showing no signs of life, irrespective of when the death occurred.
Stillbirth	A baby born at or after 24 ⁺⁰ weeks gestational age showing no signs of life, irrespective of when the death occurred.
<i>Antepartum stillbirth</i>	A baby born at or after 24 ⁺⁰ weeks gestational age showing no signs of life and known to have died before the onset of care in labour.
<i>Intrapartum stillbirth</i>	A baby born at or after 24 ⁺⁰ weeks gestational age showing no signs of life and known to have been alive at the onset of care in labour.
Neonatal death	A liveborn baby (born at 20 ⁺⁰ weeks gestational age or later, or with a birthweight of 400g or more where an accurate estimate of gestation is not available), who died before 28 completed days after birth.
<i>Early neonatal death</i>	A liveborn baby (born at 20 ⁺⁰ weeks gestational age or later, or with a birthweight of 400g or more where an accurate estimate of gestation is not available) who died before 7 completed days after birth.
<i>Late neonatal death</i>	A liveborn baby (born at 20 ⁺⁰ weeks gestational age or later, or with a birthweight of 400g or more where an accurate estimate of gestation is not available) who died after 7 completed days but before 28 completed days after birth.
Perinatal death	A stillbirth or early neonatal death.
Extended perinatal death	A stillbirth or neonatal death.
Termination of pregnancy	The deliberate ending of a pregnancy, normally carried out before the embryo or fetus is capable of independent life.

Abbreviations

BMI	Body Mass Index
CCG	Clinical Commissioning Group
CDOP	Child Death Overview Panel
HQIP	Healthcare Quality Improvement Partnership
LFL	Late Fetal Loss
MBRRACE-UK	Mothers and Babies: Reducing Risk through Audits and Confidential Enquiries across the UK
MNI-CORP	Maternal, Newborn and Infant Clinical Outcome Review Programme
NICU	Neonatal Intensive Care Unit
NIMACH	Northern Ireland Maternal and Child Health
NIMATS	Northern Ireland Maternity System
NISRA	Northern Ireland Statistics and Research Agency
NRS	National Records of Scotland
ONS	Office for National Statistics
PDS	Personal Demographics Service
PHS	Public Health Scotland
PMRT	Perinatal Mortality Review Tool
RCOG	Royal College of Obstetricians and Gynaecologists
STP	Sustainability and Transformation Partnership

Contents

1. Perinatal mortality rates in the UK: 2019	1
1.1 Mortality rates for the UK as a whole, the four countries of the UK, and the Crown Dependencies ...	1
2. Population characteristics	8
2.1 Population characteristics by Clinical Commissioning Group (England), Health Board (Scotland and Wales), Local Commissioning Group (Northern Ireland), and Crown Dependency	8
2.2 Population characteristics by Sustainability and Transformation Partnerships (England), or country of residence.....	16
2.3 Population characteristics by Local Authority	18
3. Causes of death	26
3.1 Reported causes of death	26
3.2 Post-mortem examination	31
4. Factors affecting perinatal mortality	32
4.1 Mortality rates and ratios of mortality rates: mothers' characteristics	32
4.2 Mortality rates and ratios of rates: babies' characteristics	36
4.3 Mothers' demographic, behavioural and pregnancy characteristics of deaths	44
4.4 Multidimensional effects of ethnicity, deprivation and mother's age on perinatal mortality	51
5. Perinatal mortality in the UK from routine sources	55
6. Timeliness of notification and completeness of the data reported to MBRRACE-UK	57
6.1 Timeliness of notification	57
6.2 Completeness of key data items	62
Acknowledgements	69

Figures

Figure 1:	Stillbirths by CODAC level 1 cause of death: United Kingdom and Crown Dependencies, for births in 2015 to 2019	28
Figure 2:	Neonatal deaths by CODAC level 1 cause of death: United Kingdom and Crown Dependencies, for births in 2015 to 2019	29
Figure 3:	Neonatal deaths in CODAC level 1 “Neonatal” category by CODAC level 2 cause of death: United Kingdom and Crown Dependencies, for births in 2015 to 2019	30
Figure 4:	Total stillbirth, neonatal, and extended perinatal mortality rates from statutory registrations: United Kingdom, 2008 to 2018	56
Figure 5:	Percentage of stillbirths and neonatal deaths notified to MBRRACE-UK within 30 days, by country: 2017 to 2019	58
Figure 6:	Percentage of stillbirths and neonatal deaths notified to MBRRACE-UK within 30 days, by Trust and Health Board: 2019	59
Figure 7:	Number of days to notify 90% of stillbirths and neonatal deaths, by country: 2017 to 2019.....	60
Figure 8:	Number of days to notify 90% of stillbirths and neonatal deaths, by Trust and Health Board: 2019	61
Figure 9:	Level of completeness of data reported by Trusts and Health Boards for extended perinatal deaths: United Kingdom and Crown Dependencies, for births in 2019	62

Tables

Table 1:	Number of births, stillbirths, neonatal deaths, and extended perinatal deaths by country of residence: United Kingdom and Crown Dependencies, for births in 2019	1
Table 2:	Stillbirth, neonatal, and extended perinatal mortality rates (95% confidence intervals (CIs)) by country of residence: United Kingdom and Crown Dependencies, for births in 2019	2
Table 3:	Stillbirth, neonatal, and extended perinatal mortality rates for the UK and by country of residence: United Kingdom, for births from 2013 to 2019	3
Table 4:	Number of births, stillbirths, neonatal deaths, and extended perinatal deaths by gestational age at birth: United Kingdom and Crown Dependencies, for births in 2019	4
Table 5:	Stillbirth, neonatal, and extended perinatal mortality rates (95% CIs) by gestational age at birth: United Kingdom and Crown Dependencies, for births in 2019	4
Table 6:	Number and percentage of stillbirths and late fetal losses by gestational age at birth: United Kingdom and Crown Dependencies, for births from 2015 to 2019	5
Table 7:	Number and percentage of neonatal deaths by gestational age at birth: United Kingdom and Crown Dependencies, for births from 2015 to 2019	6
Table 8:	Number and percentage of extended perinatal deaths by gestational age at birth: United Kingdom and Crown Dependencies, for births from 2015 to 2019	7
Table 9:	Proportion of mothers giving birth in population characteristic groups by Clinical Commissioning Group (England), Health Board (Scotland and Wales), Local Commissioning Group (Northern Ireland), and Crown Dependencies, for births in 2019	8
Table 10:	Proportion of mothers giving birth in population characteristic groups by Sustainability and Transformation Partnerships (England) or country of residence, for births in 2019	16
Table 11:	Proportion of mothers giving birth in population characteristic groups by Local Authority, for births in 2018	18
Table 12:	Stillbirths by CODAC level 1 cause of death: United Kingdom and Crown Dependencies, for births in 2015 to 2019	26
Table 13:	Neonatal deaths by CODAC level 1 and level 2 cause of death: United Kingdom and Crown Dependencies, for births in 2015 to 2019	26
Table 14:	Stillbirth rates by CODAC level 1 cause of death: United Kingdom and Crown Dependencies, for births in 2015 to 2019	27
Table 15:	Neonatal mortality rates by CODAC level 1 and level 2 cause of death: United Kingdom and Crown Dependencies, for births in 2015 to 2019	27
Table 16:	Number and percentage of post-mortems offered and consented to by type of death (stillbirth, neonatal death, extended perinatal death): United Kingdom and Crown Dependencies, for births in 2019	31
Table 17:	Number and percentage of placental histology examinations by type of death (stillbirths and neonatal deaths): United Kingdom and Crown Dependencies, for births in 2019	31
Table 18:	Stillbirth rates by socio-economic deprivation quintile of residence by year: United Kingdom and Crown Dependencies, for births in 2015 to 2019	32
Table 19:	Neonatal mortality rates by mothers' socio-economic deprivation quintile of residence by year: United Kingdom and Crown Dependencies, for births in 2015 to 2019	32
Table 20:	Ratios of mortality rates for stillbirth by mothers' socio-economic deprivation quintile of residence by year: United Kingdom and Crown Dependencies, for births in 2015 to 2019	33

Table 21:	Ratios of mortality rates for neonatal death by mothers' socio-economic deprivation quintile of residence by year: United Kingdom and Crown Dependencies, for births in 2015 to 2019	33
Table 22:	Stillbirth rates by mother's age by year: United Kingdom and Crown Dependencies, for births in 2015 to 2019	34
Table 23:	Neonatal mortality rates by mother's age by year: United Kingdom and Crown Dependencies, for births in 2015 to 2019.....	34
Table 24:	Ratios of mortality rates for stillbirth by mother's age by year: United Kingdom and Crown Dependencies, for births in 2015 to 2019	35
Table 25:	Ratios of mortality rates for neonatal death by mother's age by year: United Kingdom and Crown Dependencies, for births in 2015 to 2019	35
Table 26:	Stillbirth rates by babies' ethnicity by year: United Kingdom and Crown Dependencies, for births in 2015 to 2019	36
Table 27:	Neonatal mortality rates by babies' ethnicity by year: United Kingdom and Crown Dependencies, for births in 2015 to 2019	36
Table 28:	Ratios of mortality rates for stillbirth by babies' ethnicity by year: United Kingdom and Crown Dependencies, for births in 2015 to 2019	37
Table 29:	Ratios of mortality rates for neonatal death by babies' ethnicity by year: United Kingdom and Crown Dependencies, for births in 2015 to 2019.....	37
Table 30:	Number and percentage of stillbirths and late fetal losses by gestational age at birth: United Kingdom and Crown Dependencies, for births from 2015 to 2019.....	38
Table 31:	Number and percentage of neonatal deaths by gestational age at birth: United Kingdom and Crown Dependencies, for births from 2015 to 2019	39
Table 32:	Number and percentage of extended perinatal deaths by gestational age at birth: United Kingdom and Crown Dependencies, for births from 2015 to 2019	40
Table 33:	Stillbirth rates by babies' sex, multiplicity of birth and birthweight by year: United Kingdom and Crown Dependencies, for births in 2017 to 2019.....	41
Table 34:	Neonatal mortality rates by babies' sex, multiplicity of birth and birthweight by year: United Kingdom and Crown Dependencies, for births in 2017 to 2019	42
Table 35:	Ratios of mortality rates for stillbirth by babies' sex, multiplicity of birth and birthweight by year: United Kingdom and Crown Dependencies, for births in 2017 to 2019.....	43
Table 36:	Ratios of mortality rates for neonatal death by babies' sex, multiplicity of birth and birthweight by year: United Kingdom and Crown Dependencies, for births in 2017 to 2019.....	43
Table 37:	Stillbirths by mothers' demographic characteristics by year: United Kingdom and Crown Dependencies, for births in 2017 to 2019	44
Table 38:	Neonatal deaths by mothers' demographic characteristics by year: United Kingdom and Crown Dependencies, for births in 2017 to 2019	45
Table 39:	Stillbirths by mothers' behavioural characteristics by year: United Kingdom and Crown Dependencies, for births in 2017 to 2019	47
Table 40:	Neonatal deaths by mothers' behavioural characteristics by year: United Kingdom and Crown Dependencies, for births in 2017 to 2019	48
Table 41:	Stillbirths by mothers' pregnancy characteristics by year: United Kingdom and Crown Dependencies, for births in 2017 to 2019	49
Table 42:	Neonatal deaths by mothers' pregnancy characteristics by year: United Kingdom and Crown Dependencies, for births in 2017 to 2019	50
Table 43:	Stillbirths rates by baby's ethnicity, mother's age and mother's socio-economic deprivation quintile of residence: United Kingdom and Crown Dependencies, for births in 2015 to 2019	51

Table 44:	Neonatal mortality rates by baby’s ethnicity, mother’s age and mother’s socio-economic deprivation quintile of residence: United Kingdom and Crown Dependencies, for births in 2015 to 2019	52
Table 45:	Total births by baby’s ethnicity, mother’s age and mother’s socio-economic deprivation quintile of residence: United Kingdom and Crown Dependencies, for births in 2015 to 2019	53
Table 46:	Live births by baby’s ethnicity, mother’s age and mother’s socio-economic deprivation quintile of residence: United Kingdom and Crown Dependencies, for births in 2015 to 2019	54
Table 47:	Total stillbirth, neonatal, and extended perinatal mortality rates from statutory registrations by country: United Kingdom, 2009 to 2019.....	55
Table 48:	Percentage of stillbirths, neonatal deaths and extended perinatal deaths notified to MBRRACE-UK within 30 days, by country: 2017 to 2019.....	57
Table 49:	Number of days to notify 90% of stillbirths, neonatal deaths and extended perinatal deaths, by country: 2017 to 2019	59
Table 50:	Timeliness of notification and completeness of selected data items reported to MBRRACE-UK by NHS Trust (England), Health Board (Scotland and Wales), Health and Social Care Trust (Northern Ireland), and Crown Dependency: United Kingdom and Crown Dependencies, for births in 2019.....	63



1. Perinatal mortality rates in the UK: 2019

Mortality rates for individual organisations

Mortality rates for the following types of organisation can be found online at: www.npeu.ox.ac.uk/mbrance-uk/reports:

- Commissioning organisations;
- Trusts and Health Boards, including and excluding deaths due to congenital anomalies;
- Neonatal Networks;
- Local Authorities.

1.1 Mortality rates for the UK as a whole, the four countries of the UK, and the Crown Dependencies

Table 1: Number of births, stillbirths, neonatal deaths, and extended perinatal deaths by country of residence: United Kingdom and Crown Dependencies, for births in 2019

Number [§]	UK [^]	England	Scotland	Wales	Northern Ireland [°]	Crown Dep.
Total births	716,825	612,522	49,737	29,815	22,548	2,122
Live births	714,426	610,482	49,577	29,695	22,475	2,118
Stillbirths	2,399	2,040	160	120	73	4
Antepartum	2,121	1,804	139	107	65	4
Intrapartum	183	160	10	7	6	0
Unknown timing	95	76	11	6	2	0
Neonatal deaths	1,158	948	74	69	64	3
Early neonatal deaths	769	615	53	50	50	1
Late neonatal deaths	389	333	21	19	14	2
Perinatal deaths	3,168	2,655	213	170	123	5
Extended perinatal deaths	3,557	2,988	234	189	137	7

[§] excluding terminations of pregnancy and births <24⁺ weeks gestational age

[^] including the Crown Dependencies and mothers with unknown residency

[°] different laws exist in Northern Ireland for the termination of pregnancy

Data sources: MBRRACE-UK, ONS, PDS, NRS, PHS, NIMATS, States of Guernsey, States of Jersey

© 2021, re-used with the permission of NHS Digital. All rights reserved.

Table 2: Stillbirth, neonatal, and extended perinatal mortality rates (95% confidence intervals (CIs)) by country of residence: United Kingdom and Crown Dependencies, for births in 2019

Rate per 1,000 births [§]	UK [^]	England	Scotland	Wales	Northern Ireland [°]	Crown Dep.
Stillbirths[†]	3.35	3.33	3.22	4.02	3.24	1.89
	(3.21 to 3.48)	(3.19 to 3.47)	(2.72 to 3.71)	(3.31 to 4.74)	(2.5 to 3.98)	(0.04 to 3.73)
Antepartum [†]	2.96 (2.83 to 3.08)	2.95 (2.81 to 3.08)	2.79 (2.33 to 3.26)	3.59 (2.91 to 4.27)	2.88 (2.18 to 3.58)	1.89 (0.04 to 3.73)
Intrapartum [†]	0.26 (0.22 to 0.29)	0.26 (0.22 to 0.3)	0.20 (0.08 to 0.33)	0.23 (0.06 to 0.41)	0.27 (0.05 to 0.48)	0.00 (0 to 1.41)
Unknown timing [†]	0.13 (0.11 to 0.16)	0.12 (0.1 to 0.15)	0.22 (0.09 to 0.35)	0.20 (0.04 to 0.36)	0.09 (0 to 0.21)	0.00 (0 to 1.41)
Neonatal deaths[‡]	1.62	1.55	1.49	2.32	2.85	1.42
	(1.53 to 1.71)	(1.45 to 1.65)	(1.15 to 1.83)	(1.78 to 2.87)	(2.15 to 3.54)	(0 to 3.02)
Early neonatal deaths [‡]	1.08 (1 to 1.15)	1.01 (0.93 to 1.09)	1.07 (0.78 to 1.36)	1.68 (1.22 to 2.15)	2.22 (1.61 to 2.84)	0.47 (0 to 1.4)
Late neonatal deaths [‡]	0.54 (0.49 to 0.6)	0.55 (0.49 to 0.6)	0.42 (0.24 to 0.6)	0.64 (0.35 to 0.93)	0.62 (0.3 to 0.95)	0.94 (0 to 2.25)
Perinatal deaths[†]	4.42	4.33	4.28	5.70	5.46	2.36
	(4.27 to 4.57)	(4.17 to 4.5)	(3.71 to 4.86)	(4.85 to 6.56)	(4.49 to 6.42)	(0.29 to 4.42)
Extended perinatal deaths[†]	4.96	4.88	4.70	6.34	6.08	3.30
	(4.8 to 5.12)	(4.7 to 5.05)	(4.1 to 5.31)	(5.44 to 7.24)	(5.06 to 7.09)	(0.86 to 5.74)

[†] per 1,000 total births

[‡] per 1,000 live births

[§] excluding terminations of pregnancy and births <24⁺⁰ weeks gestational age

[°] different laws exist in Northern Ireland for the termination of pregnancy

[^] including the Crown Dependencies and mothers with unknown residency

Data sources: MBRRACE-UK, PDS, ONS, NRS, PHS, NIMATS, States of Guernsey, States of Jersey

© 2021, re-used with the permission of NHS Digital. All rights reserved.

Table 3: Stillbirth, neonatal, and extended perinatal mortality rates for the UK and by country of residence: United Kingdom, for births from 2013 to 2019

Rate per 1,000 births [§]	UK [^]	England	Scotland	Wales	Northern Ireland [°]	Crown Dep.
Stillbirths[†]						
2013	4.20 (4.06 to 4.35)	4.26 (4.10 to 4.42)	3.78 (3.30 to 4.32)	3.78 (3.18 to 4.50)	4.33 (3.58 to 5.24)	3.25 (1.65 to 6.40)
2014	4.12 (3.98 to 4.326)	4.19 (4.04 to 4.35)	3.69 (3.19 to 4.19)	4.71 (3.98 to 5.44)	3.76 (2.99 to 4.52)	1.24 (0.00 to 2.64)
2015	3.87 (3.73 to 4.01)	3.93 (3.78 to 4.08)	3.47 (2.98 to 3.96)	4.10 (3.41 to 4.78)	3.24 (2.53 to 3.95)	1.67 (0.03 to 3.3)
2016	3.93 (3.79 to 4.07)	3.92 (3.77 to 4.07)	3.67 (3.17 to 4.18)	4.44 (3.73 to 5.16)	3.97 (3.18 to 4.76)	3.36 (1.04 to 5.68)
2017	3.74 (3.6 to 3.87)	3.68 (3.53 to 3.83)	3.89 (3.36 to 4.42)	3.99 (3.31 to 4.68)	4.63 (3.76 to 5.5)	3.11 (0.81 to 5.42)
2018	3.51 (3.37 to 3.64)	3.52 (3.37 to 3.67)	3.22 (2.73 to 3.71)	3.79 (3.11 to 4.47)	3.43 (2.68 to 4.19)	2.30 (0.29 to 4.31)
2019	3.35 (3.21 to 3.48)	3.33 (3.19 to 3.47)	3.22 (2.72 to 3.71)	4.02 (3.31 to 4.74)	3.24 (2.5 to 3.98)	1.89 (0.04 to 3.73)
Neonatal deaths[‡]						
2013	1.84 (1.75 to 1.94)	1.83 (1.73 to 1.94)	1.66 (1.36 to 2.04)	1.90 (1.49 to 2.42)	2.44 (1.89 to 3.15)	1.22 (0.42 to 3.59)
2014	1.76 (1.67 to 1.86)	1.73 (1.63 to 1.83)	1.86 (1.51 to 2.22)	1.67 (1.23 to 2.10)	2.99 (2.31 to 3.68)	1.24 (0.00 to 2.65)
2015	1.74 (1.65 to 1.84)	1.71 (1.62 to 1.81)	1.26 (0.96 to 1.55)	2.10 (1.61 to 2.59)	3.21 (2.5 to 3.92)	1.25 (0.00 to 2.67)
2016	1.72 (1.63 to 1.81)	1.72 (1.62 to 1.82)	1.69 (1.34 to 2.03)	1.43 (1.02 to 1.84)	2.20 (1.61 to 2.79)	1.26 (0.00 to 2.69)
2017	1.67 (1.58 to 1.77)	1.65 (1.55 to 1.75)	1.59 (1.25 to 1.93)	1.93 (1.45 to 2.41)	2.07 (1.48 to 2.65)	0.89 (0.00 to 2.13)
2018	1.64 (1.54 to 1.73)	1.63 (1.53 to 1.73)	1.36 (1.04 to 1.68)	1.95 (1.46 to 2.44)	2.05 (1.46 to 2.64)	0.00 (0.00 to 1.38)
2019	1.62 (1.53 to 1.71)	1.55 (1.45 to 1.65)	1.49 (1.15 to 1.83)	2.32 (1.78 to 2.87)	2.85 (2.15 to 3.54)	1.42 (0 to 3.02)
Extended perinatal deaths[‡]						
2013	6.04 (5.87 to 6.21)	6.09 (5.90 to 6.28)	5.43 (4.86 to 6.08)	5.68 (4.93 to 6.53)	6.76 (5.81 to 7.87)	4.47 (2.50 to 7.98)
2014	5.88 (5.71 to 6.04)	5.91 (5.73 to 6.10)	5.55 (4.93 to 6.16)	6.37 (5.52 to 7.22)	6.74 (5.71 to 7.76)	2.48 (0.50 to 4.46)
2015	5.61 (5.44 to 5.77)	5.64 (5.46 to 5.81)	4.72 (4.15 to 5.29)	6.19 (5.35 to 7.03)	6.44 (5.44 to 7.44)	2.92 (0.76 to 5.08)
2016	5.64 (5.48 to 5.281)	5.64 (5.46 to 5.82)	5.36 (4.74 to 5.97)	5.87 (5.04 to 6.69)	6.16 (5.18 to 67.15)	4.62 (1.90 to 7.34)
2017	5.40 (5.24 to 5.57)	5.33 (5.15 to 5.51)	5.47 (4.85 to 6.10)	5.91 (5.08 to 6.75)	6.69 (5.64 to 7.74)	4.00 (1.39 to 6.61)
2018	5.13 (4.97 to 5.3)	5.15 (4.97 to 5.32)	4.58 (4 to 5.17)	5.73 (4.9 to 6.57)	5.48 (4.52 to 6.43)	2.30 (0.29 to 4.31)
2019	4.96 (4.8 to 5.12)	4.88 (4.7 to 5.05)	4.70 (4.1 to 5.31)	6.34 (5.44 to 7.24)	6.08 (5.06 to 7.09)	3.30 (0.86 to 5.74)

[§] excluding terminations of pregnancy and births <24⁺⁰ weeks gestational age

[^] including the Crown Dependencies

[°] different laws exist in Northern Ireland for the termination of pregnancy

[†] per 1,000 total births

[‡] per 1,000 live births

Data sources: MBRRACE-UK, PDS, ONS, NRS, PHS, NIMATS, States of Guernsey, States of Jersey

Table 4: Number of births, stillbirths, neonatal deaths, and extended perinatal deaths by gestational age at birth: United Kingdom and Crown Dependencies, for births in 2019

Number [§]	Gestational age at birth (weeks)					
	22 ⁺⁰ -23 ⁺⁶	24 ⁺⁰ -27 ⁺⁶	28 ⁺⁰ -31 ⁺⁶	32 ⁺⁰ -36 ⁺⁶	37 ⁺⁰ -41 ⁺⁶ [°]	≥42 ⁺⁰
Total births	1,039	2,943	5,958	46,518	625,274	13,214
Live births	525	2,339	5,541	45,883	624,541	13,206
Stillbirths	514	604	417	635	733	8
Antepartum	321	527	390	580	618	5
Intrapartum	140	52	17	34	77	3
Unknown timing	53	25	10	21	38	0
Neonatal deaths	337	349	160	241	398	6
Early neonatal deaths	278	235	115	170	241	4
Late neonatal deaths	59	114	45	71	157	2
Perinatal deaths	792	839	532	805	974	12
Extended perinatal deaths	851	953	577	876	1,131	14

[§] excluding terminations of pregnancy

[°] births with missing information for gestational ages were excluded (n=22,918)

Data sources: MBRRACE-UK, ONS, PDS, NRS, PHS, NIMATS, States of Guernsey, States of Jersey

© 2021, re-used with the permission of NHS Digital. All rights reserved.

Table 5: Stillbirth, neonatal, and extended perinatal mortality rates (95% CIs) by gestational age at birth: United Kingdom and Crown Dependencies, for births in 2019

Rate per 1,000 births [§]	Gestational age at birth (weeks) [°]					
	22 ⁺⁰ -23 ⁺⁶	24 ⁺⁰ -27 ⁺⁶	28 ⁺⁰ -31 ⁺⁶	32 ⁺⁰ -36 ⁺⁶	37 ⁺⁰ -41 ⁺⁶ [°]	≥42 ⁺⁰
Stillbirths[†]	494.71	205.23	69.99	13.65	1.17	0.61
	(464.3 to 525.1)	(190.6 to 219.8)	(63.5 to 76.5)	(12.6 to 14.7)	(1.1 to 1.3)	(0.2 to 1.0)
Antepartum [†]	308.95	179.07	65.46	12.47	0.99	0.38
	(280.9 to 337)	(165.2 to 192.9)	(59.2 to 71.7)	(11.5 to 13.5)	(0.9 to 1.1)	(0.0 to 0.7)
Intrapartum [†]	134.74	17.67	2.85	0.73	0.12	0.23
	(114 to 155.5)	(12.9 to 22.4)	(1.5 to 4.2)	(0.5 to 1.0)	(0.1 to 0.2)	(0.0 to 0.5)
Unknown timing [†]	51.01	8.49	1.68	0.45	0.06	0.00
	(37.6 to 64.4)	(5.2 to 11.8)	(0.6 to 2.7)	(0.3 to 0.6)	(0.0 to 0.1)	(0.0 to 0.0)
Neonatal deaths[‡]	641.90	149.21	28.88	5.25	0.64	0.45
	(600.9 to 682.9)	(134.8 to 163.6)	(24.5 to 33.3)	(4.6 to 5.9)	(0.6 to 0.7)	(0.1 to 0.8)
Early neonatal deaths [‡]	529.52	100.47	20.75	3.71	0.39	0.30
	(486.8 to 572.2)	(88.3 to 112.7)	(17.0 to 24.5)	(3.1 to 4.3)	(0.3 to 0.4)	(0.0 to 0.6)
Late neonatal deaths [‡]	112.38	48.74	8.12	1.55	0.25	0.15
	(85.4 to 139.4)	(40 to 57.5)	(5.8 to 10.5)	(1.2 to 1.9)	(0.2 to 0.3)	(0.0 to 0.4)
Perinatal deaths[†]	762.27	285.08	89.29	17.31	1.56	0.91
	(736.4 to 788.2)	(268.8 to 301.4)	(82.1 to 96.5)	(16.1 to 18.5)	(1.5 to 1.7)	(0.4 to 1.4)
Extended perinatal deaths[†]	819.06	323.82	96.84	18.83	1.81	1.06
	(795.6 to 842.5)	(306.9 to 340.7)	(89.3 to 104.4)	(17.6 to 20.1)	(1.7 to 1.9)	(0.5 to 1.6)

[§] excluding terminations of pregnancy

[°] births with missing information for gestational ages were excluded (n=22,918)

[†] per 1,000 total births

[‡] per 1,000 live births

Data sources: MBRRACE-UK, PDS, ONS, NRS, PHS, NIMATS, States of Guernsey, States of Jersey

© 2021, re-used with the permission of NHS Digital. All rights reserved.

Table 6: Number and percentage of stillbirths and late fetal losses by gestational age at birth: United Kingdom and Crown Dependencies, for births from 2015 to 2019

Gestational age at birth (weeks)		2015	2016	2017	2018	2019
22 ⁺⁰ -23 ⁺⁶	Births [§]	1,001	1,040	1,078	1,022	1,039
	Late fetal losses N (%)	524 (14.7)	529 (14.7)	530 (15.7)	508 (16.5)	514 (17.7)
	Rates per 1,000 births [†]	523.5	508.7	491.7	497.1	494.71
24 ⁺⁰ -27 ⁺⁶	Births [§]	3,221	3,269	3,227	3,064	2,943
	Stillbirths N (%)	733 (20.6)	717 (19.9)	710 (21.1)	665 (21.6)	604 (20.7)
	Rates per 1,000 births [†]	227.6	219.3	220.0	217.0	205.23
28 ⁺⁰ -31 ⁺⁶	Births [§]	6,558	6,620	6,540	6,083	5,958
	Stillbirths N (%)	495 (13.9)	512 (14.2)	482 (14.3)	467 (15.1)	417 (14.3)
	Rates per 1,000 births [†]	75.5	77.3	73.7	76.8	69.99
32 ⁺⁰ -36 ⁺⁶	Births [§]	49,652	50,371	50,296	48,189	46,518
	Stillbirths N (%)	762 (21.4)	786 (21.9)	730 (21.7)	658 (21.3)	635 (21.8)
	Rates per 1,000 births [†]	15.3	15.6	14.5	13.7	13.65
37 ⁺⁰ -41 ⁺⁶	Births [§]	704,733	678,093	660,980	637,280	625,274
	Stillbirths N (%)	1025 (28.8)	1031 (28.7)	894 (26.5)	772 (25.0)	733 (25.2)
	Rates per 1,000 births [†]	1.5	1.5	1.4	1.2	1.17
≥42	Births [§]	18,980	18,277	16,212	14,307	13,214
	Stillbirths N (%)	15 (0.4)	19 (0.5)	22 (0.7)	15 (0.5)	8 (0.3)
	Rates per 1,000 births [†]	0.8	1.0	1.4	1.1	0.61
Total births		784,145	757,670	738,333	709,945	694,946

[§] excluding terminations of pregnancy and births with missing gestational age

[†] per 1,000 total births

[‡] per 1,000 live births

Data sources: MBRRACE-UK, PDS, ONS, NRS, PHS, NIMATS, States of Guernsey, States of Jersey
© 2021, re-used with the permission of NHS Digital. All rights reserved.

Table 7: Number and percentage of neonatal deaths by gestational age at birth: United Kingdom and Crown Dependencies, for births from 2015 to 2019

Gestational age at birth (weeks)		2015	2016	2017	2018	2019
22 ⁺⁰ -23 ⁺⁶	Live births [§]	477	511	548	514	525
	Neonatal deaths N (%)	342 (20.1)	360 (21.3)	386 (23.4)	356 (22.9)	337 (22.6)
	Rates per 1,000 births [‡]	717.0	704.5	704.4	692.6	641.90
24 ⁺⁰ -27 ⁺⁶	Live births [§]	2,488	2,552	2,517	2,399	2,339
	Neonatal deaths N (%)	383 (22.5)	404 (23.9)	365 (22.2)	342 (22.0)	349 (23.4)
	Rates per 1,000 births [‡]	153.9	158.3	145.0	142.6	149.21
28 ⁺⁰ -31 ⁺⁶	Live births [§]	6,063	6,108	6,058	5,616	5,541
	Neonatal deaths N (%)	205 (12)	177 (10.5)	187 (11.4)	167 (10.8)	160 (10.7)
	Rates per 1,000 births [‡]	33.8	29.0	30.9	29.7	28.88
32 ⁺⁰ -36 ⁺⁶	Live births [§]	48,890	49,585	49,566	47,531	45,883
	Neonatal deaths N (%)	271 (15.9)	275 (16.2)	270 (16.4)	244 (15.7)	241 (16.2)
	Rates per 1,000 births [‡]	5.5	5.5	5.4	5.1	5.25
37 ⁺⁰ -41 ⁺⁶	Live births [§]	703,708	677,062	660,086	636,508	624,541
	Neonatal deaths N (%)	495 (29.1)	468 (27.6)	428 (26)	431 (27.8)	398 (26.7)
	Rates per 1,000 births [‡]	0.7	0.7	0.6	0.7	0.64
≥42	Births [§]	18,965	18,258	16,190	14,292	13,206
	Neonatal deaths N (%)	7 (0.4)	9 (0.5)	11 (0.7)	13 (0.8)	6 (0.4)
	Rates per 1,000 births [‡]	0.4	0.5	0.7	0.9	0.45
Total live births		780,591	754,076	734,965	706,860	692,035

[§] excluding terminations of pregnancy and births with missing gestational age

[†] per 1,000 total births

[‡] per 1,000 live births

Data sources: MBRRACE-UK, PDS, ONS, NRS, PHS, NIMATS, States of Guernsey, States of Jersey
© 2021, re-used with the permission of NHS Digital. All rights reserved.

Table 8: Number and percentage of extended perinatal deaths by gestational age at birth: United Kingdom and Crown Dependencies, for births from 2015 to 2019

Gestational age at birth (weeks)		2015	2016	2017	2018	2019
22 ⁺⁰ -23 ⁺⁶	Births [§]	1,001	1,040	1,078	1,022	1,039
	Extended perinatal deaths N (%)	866 (16.5)	889 (16.8)	916 (18.3)	864 (18.6)	851 (19.3)
	Rates per 1,000 births [†]	865.1	854.8	849.7	845.4	819.06
24 ⁺⁰ -27 ⁺⁶	Births [§]	3,221	3,269	3,227	3,064	2,943
	Extended perinatal deaths N (%)	1116 (21.2)	1121 (21.2)	1075 (21.4)	1007 (21.7)	953 (21.6)
	Rates per 1,000 births [†]	346.5	342.9	333.1	328.7	323.82
28 ⁺⁰ -31 ⁺⁶	Births [§]	6,558	6,620	6,540	6,083	5,958
	Extended perinatal deaths N (%)	700 (13.3)	689 (13)	669 (13.3)	634 (13.7)	577 (13.1)
	Rates per 1,000 births [†]	106.7	104.1	102.3	104.2	96.84
32 ⁺⁰ -36 ⁺⁶	Births [§]	49,652	50,371	50,296	48,189	46,518
	Extended perinatal deaths N (%)	1033 (19.6)	1061 (20.1)	1000 (19.9)	902 (19.4)	876 (19.9)
	Rates per 1,000 births [†]	20.8	21.1	19.9	18.7	18.83
37 ⁺⁰ -41 ⁺⁶	Births [§]	704,733	678,093	660,980	637,280	625,274
	Extended perinatal deaths N (%)	1520 (28.9)	1499 (28.4)	1322 (26.4)	1203 (25.9)	1131 (25.7)
	Rates per 1,000 births [†]	2.2	2.2	2.0	1.9	1.81
≥42	Births [§]	18,980	18,277	16,212	14,307	13,214
	Extended perinatal deaths N (%)	22 (0.4)	28 (0.5)	33 (0.7)	28 (0.6)	14 (0.3)
	Rates per 1,000 births [†]	1.2	1.5	2.0	2.0	1.06
Total births		784,145	757,670	738,333	709,945	694,946

[§] excluding terminations of pregnancy and births with missing gestational age

[†] per 1,000 total births

[‡] per 1,000 live births

Data sources: MBRRACE-UK, PDS, ONS, NRS, PHS, NIMATS, States of Guernsey, States of Jersey
 © 2021, re-used with the permission of NHS Digital. All rights reserved.

2. Population characteristics

2.1 Population characteristics by Clinical Commissioning Group (England), Health Board (Scotland and Wales), Local Commissioning Group (Northern Ireland), and Crown Dependency

The shading in Table 9 represents the quintiles of all commissioning organisations:

- 5th quintile: highest 20% of commissioning organisations;
- 4th quintile
- 3rd quintile
- 2nd quintile
- 1st quintile: lowest 20% of commissioning organisations.

Example: 18.1% of mothers giving birth in Airedale, Wharfedale and Craven CCG are Asian or Asian British, which places this CCG in the in the 5th quintile or highest 20% of commissioning organisations for this population characteristic.

Table 9: Proportion of mothers giving birth in population characteristic groups by Clinical Commissioning Group (England), Health Board (Scotland and Wales), Local Commissioning Group (Northern Ireland), and Crown Dependencies, for births in 2019

Clinical Commissioning Group	Asian or Asian British [§]	Black or Black British [§]	Mother's age <20 years [§]	Mother's age >39 years [§]	Top quintile of child poverty [§]	Multiple birth [§]	Born at 24 to 31 weeks [§]
ENGLAND							
Airedale, Wharfedale and Craven	18.1	0.5	1.7	3.7	16.4	2.4	2.1
Ashford	4.5	2.9	4.0	2.9	12.6	2.7	1.2
Barking and Dagenham	27.5	20.0	2.7	5.1	10.3	3.7	1.7
Barnet	13.3	7.8	0.8	6.6	6.1	3.0	0.8
Barnsley	0.4	0.7	4.0	2.1	32.0	2.6	1.2
Basildon and Brentwood	3.4	3.8	2.3	3.5	12.7	3.9	1.4
Bassetlaw	1.1	0.3	4.4	3.4	13.8	3.3	1.1
Bath and North East Somerset	0.8	0.5	1.8	4.2	1.8	2.2	0.7
Bedfordshire	7.5	3.6	2.3	4.4	6.0	3.4	1.2
Berkshire West	12.5	3.8	1.8	5.3	4.2	3.0	1.1
Bexley	9.0	13.6	2.1	4.3	9.6	3.0	1.0
Birmingham and Solihull	30.9	7.8	3.0	4.2	46.4	2.9	1.5
Blackburn with Darwen	43.8	0.7	4.3	2.8	23.2	2.3	1.3

Clinical Commissioning Group	Asian or Asian British [§]	Black or Black British [§]	Mother's age <20 years [§]	Mother's age >39 years [§]	Top quintile of child poverty [§]	Multiple birth [§]	Born at 24 to 31 weeks [§]
Blackpool	2.2	0.7	5.9	2.6	41.3	3.7	1.1
Bolton	25.7	6.1	3.1	3.5	26.9	3.0	1.6
Bradford City	64.5	4.8	3.3	3.6	61.8	2.2	1.8
Bradford Districts	36.8	1.6	3.8	3.2	34.0	2.4	1.6
Brent	29.9	13.8	1.8	6.3	9.5	3.1	1.4
Brighton and Hove	4.1	2.1	1.9	9.2	16.3	4.2	1.4
Bristol, North Somerset and South Gloucestershire	4.5	4.9	2.1	4.5	17.2	3.2	1.2
Bromley	6.7	6.7	1.2	7.0	13.7	3.9	1.0
Buckinghamshire	15.9	2.4	1.2	5.8	0.2	2.8	1.1
Bury	15.0	2.5	2.5	4.2	11.9	2.9	1.6
Calderdale	15.4	0.8	3.2	3.5	25.6	3.0	1.3
Cambridgeshire and Peterborough	8.1	2.0	2.4	5.0	6.0	3.2	1.1
Camden	14.8	8.6	1.2	8.9	52.6	3.4	0.8
Cannock Chase	1.0	0.5	3.5	2.7	11.0	2.9	1.1
Canterbury and Coastal	2.1	1.6	3.3	4.5	22.1	4.3	1.2
Castle Point and Rochford	1.1	0.8	2.3	4.3	8.6	3.8	0.9
Central London (Westminster)	11.9	7.0	0.7	9.0	35.8	3.9	0.9
Chorley and South Ribble	2.3	0.2	3.1	2.4	3.8	2.2	0.9
City and Hackney	7.9	16.0	1.5	7.4	37.5	2.6	1.4
Coastal West Sussex	2.4	0.7	2.0	4.7	6.5	3.5	1.5
Corby	3.0	2.9	3.9	2.6	11.9	5.2	1.4
Coventry and Rugby	14.2	8.1	3.1	3.9	25.6	3.1	1.5
Crawley	16.6	4.7	3.3	3.2	3.1	2.7	1.6
Croydon	16.8	20.2	2.2	6.1	4.5	3.0	1.1
Darlington	3.2	0.3	5.0	3.0	34.5	2.6	1.9
Dartford, Gravesham and Swanley	9.3	8.7	3.0	4.1	13.8	3.6	1.2
Derby and Derbyshire	6.0	1.4	3.3	3.1	20.9	3.0	1.2
Devon	1.4	0.5	3.1	3.9	12.7	3.2	1.3
Doncaster	3.7	1.5	4.8	2.6	37.0	2.3	1.2
Dorset	2.2	0.6	2.4	3.8	8.1	2.5	1.1
Dudley	12.5	2.6	3.7	2.9	34.5	2.3	0.9

Clinical Commissioning Group	Asian or Asian British [§]	Black or Black British [§]	Mother's age <20 years [§]	Mother's age >39 years [§]	Top quintile of child poverty [§]	Multiple births [§]	Born at 24 to 31 weeks [§]
Durham Dales, Easington and Sedgfield	0.7	0.2	5.5	2.1	42.7	3.4	1.4
Ealing	30.3	10.2	1.2	7.5	8.3	3.7	1.8
East Berkshire	27.4	3.9	1.4	6.0	0.0	2.7	1.1
East Lancashire	21.4	0.2	3.5	2.9	16.2	2.8	1.3
East Leicestershire and Rutland	10.9	1.1	2.0	4.4	0.7	3.1	1.4
East Riding of Yorkshire	0.8	0.3	3.2	3.0	9.2	2.5	1.4
East Staffordshire	12.2	1.2	3.0	3.8	2.3	2.5	1.0
East Surrey	5.4	2.8	1.4	5.3	1.5	2.7	0.8
East and North Hertfordshire	5.4	3.3	1.6	4.5	3.3	3.5	1.1
Eastbourne, Hailsham and Seaford	2.7	0.8	2.5	3.9	12.9	3.5	1.6
Eastern Cheshire	2.3	0.5	1.1	5.8	0.8	2.2	0.4
Enfield	8.3	18.0	2.5	6.9	30.2	3.4	1.6
Fareham and Gosport	1.1	0.8	3.3	4.1	5.9	2.2	1.7
Fylde and Wyre	0.8	0.2	3.2	3.6	12.6	3.1	1.0
Gloucestershire	2.6	1.1	2.0	4.7	7.9	3.3	1.1
Great Yarmouth and Waveney	1.7	1.1	3.9	2.8	24.4	2.9	1.5
Greater Huddersfield	18.0	3.0	2.1	3.8	21.8	2.5	0.9
Greater Preston	17.6	2.0	4.2	3.1	14.7	2.6	1.4
Greenwich	10.8	18.9	2.0	6.2	25.5	3.7	1.6
Guildford and Waverley	3.6	1.1	1.7	6.9	1.6	3.9	1.6
Halton	0.9	0.2	5.3	3.7	26.3	3.0	1.3
Hambleton, Richmondshire and Whitby	1.8	0.6	2.4	3.8	1.2	4.2	1.4
Hammersmith and Fulham	6.0	11.5	0.8	8.9	19.2	2.9	0.8
Haringey	5.9	16.4	1.9	7.7	33.2	3.2	1.3
Harrogate and Rural District	0.5	0.2	1.4	4.4	0.0	2.0	1.2
Harrow	38.2	5.2	1.3	4.7	0.0	3.3	1.6
Hartlepool and Stockton-on-Tees	4.6	1.6	5.1	2.9	48.0	2.6	1.5
Hastings and Rother	2.6	0.7	3.3	4.1	32.6	3.3	1.0
Havering	13.6	8.1	2.0	4.3	10.4	3.2	1.5
Herefordshire	0.9	0.4	2.5	3.4	3.4	3.3	1.7

Clinical Commissioning Group	Asian or Asian British [§]	Black or Black British [§]	Mother's age <20 years [§]	Mother's age >39 years [§]	Top quintile of child poverty [§]	Multiple birth [§]	Born at 24 to 31 weeks [§]
Herts Valleys	11.8	3.2	1.4	6.2	3.4	3.5	1.2
Heywood, Middleton and Rochdale	24.0	4.2	3.2	2.9	31.7	2.9	1.5
High Weald Lewes Havens	1.3	0.6	2.1	6.0	1.8	4.4	1.5
Hillingdon	36.6	8.1	1.5	5.8	6.1	3.8	1.5
Horsham and Mid Sussex	4.2	1.1	1.2	6.5	0.0	2.9	1.2
Hounslow	37.2	7.1	1.5	6.1	1.9	2.7	1.4
Hull	2.7	2.0	4.5	2.1	53.5	2.6	1.7
Ipswich and East Suffolk	2.9	1.8	4.1	3.4	11.4	2.7	1.2
Isle of Wight	0.9	0.7	4.6	3.0	18.2	3.4	1.5
Islington	6.5	15.0	1.1	8.0	57.6	3.7	1.0
Kernow	0.5	0.1	2.9	3.8	12.9	2.2	1.5
Kingston	13.2	2.5	1.1	6.3	1.2	3.4	0.9
Knowsley	0.7	0.6	3.0	2.3	48.0	2.8	1.2
Lambeth	4.7	22.3	1.7	7.6	30.6	3.8	1.6
Leeds	11.0	7.5	3.3	4.1	35.0	2.7	1.0
Leicester City	35.2	5.9	3.1	4.4	30.1	2.9	1.4
Lewisham	6.0	21.1	1.7	7.2	22.9	3.3	1.3
Lincolnshire East	1.4	0.2	4.9	2.8	19.7	2.7	1.4
Lincolnshire West	1.3	0.9	3.4	2.8	23.7	2.4	1.1
Liverpool	3.1	3.1	3.2	3.4	53.4	3.0	1.3
Luton	44.3	7.8	2.3	4.3	16.9	3.2	1.8
Manchester	23.3	13.8	2.4	4.8	48.0	2.6	1.5
Mansfield and Ashfield	1.6	0.9	4.4	2.3	30.7	2.4	1.2
Medway	5.1	5.4	3.4	3.4	24.7	3.3	1.4
Merton	17.1	8.1	1.1	8.1	5.8	3.6	0.9
Mid Essex	2.5	1.9	1.6	4.3	4.2	3.1	0.7
Milton Keynes	13.4	9.9	2.2	4.5	7.3	2.8	1.2
Morecambe Bay	0.4	0.0	3.6	3.0	12.1	2.4	1.0
Nene	5.0	4.7	3.0	3.6	7.7	2.6	1.0
Newark and Sherwood	0.9	0.3	2.6	4.0	14.7	2.7	0.8
Newcastle Gateshead	7.9	3.8	4.0	3.6	37.0	2.8	1.2

Clinical Commissioning Group	Asian or Asian British [§]	Black or Black British [§]	Mother's age <20 years [§]	Mother's age >39 years [§]	Top quintile of child poverty [§]	Multiple birth [§]	Born at 24 to 31 weeks [§]
Newham	42.1	14.4	1.3	4.4	11.4	3.0	1.2
North Cumbria	0.7	0.2	3.4	2.7	7.2	2.9	1.3
North Durham	1.1	0.4	3.8	3.0	19.9	2.7	0.8
North East Essex	2.7	2.1	3.2	3.2	23.3	2.6	1.3
North East Hampshire and Farnham	8.6	1.9	1.3	4.5	0.6	3.7	0.6
North East Lincolnshire	1.3	0.2	6.1	2.1	51.0	3.3	1.6
North Hampshire	5.6	2.0	1.8	4.1	0.9	3.2	1.0
North Kirklees	34.0	0.8	3.5	3.2	17.7	2.7	1.6
North Lincolnshire	4.4	0.4	4.8	3.3	21.4	2.8	1.3
North Norfolk	0.3	0.0	2.6	3.8	0.0	3.1	1.3
North Staffordshire	2.1	0.8	2.7	3.7	9.9	3.8	0.7
North Tyneside	1.9	0.7	3.1	3.9	18.8	2.4	1.3
North West Surrey	12.8	1.4	1.4	6.0	5.0	2.8	0.9
Northumberland	0.8	0.1	4.3	3.2	26.6	2.8	1.0
Norwich	4.0	2.4	3.6	4.3	20.4	3.9	1.4
Nottingham City	16.8	9.4	3.7	3.9	60.5	3.0	1.7
Nottingham North and East	3.6	3.1	3.0	3.3	8.6	3.1	1.1
Nottingham West	6.4	1.6	2.7	2.9	13.2	3.9	1.5
Oldham	32.4	3.9	4.0	3.7	36.1	2.3	1.4
Oxfordshire	7.1	2.0	1.7	4.9	3.5	2.8	1.0
Portsmouth	6.4	3.5	3.0	3.4	24.0	3.1	1.4
Redbridge	47.7	7.0	1.6	5.8	1.0	3.1	1.3
Redditch and Bromsgrove	5.5	0.5	2.4	3.0	8.7	4.1	1.3
Richmond	6.2	2.2	0.7	11.9	1.6	3.2	1.5
Rotherham	6.4	1.2	4.9	2.5	35.3	3.4	1.3
Rushcliffe	4.3	1.2	1.4	5.7	0.9	3.5	0.9
Salford	4.8	7.9	3.1	3.9	32.0	2.1	1.0
Sandwell and West Birmingham	36.2	13.9	3.3	3.9	50.4	3.1	1.4
Scarborough and Ryedale	0.7	0.7	5.1	4.0	18.4	4.3	1.0
Sheffield	11.0	6.1	3.1	4.3	44.8	3.1	1.3
Shropshire	0.9	0.2	2.7	3.3	6.6	2.5	0.7

Clinical Commissioning Group	Asian or Asian British [§]	Black or Black British [§]	Mother's age <20 years [§]	Mother's age >39 years [§]	Top quintile of child poverty [§]	Multiple birth [§]	Born at 24 to 31 weeks [§]
Somerset	1.3	0.4	2.8	3.1	5.3	2.4	1.1
South Cheshire	2.3	0.5	3.0	3.0	6.0	2.7	0.5
South East Staffordshire and SePHSon Peninsula	2.2	0.4	2.8	3.3	8.4	1.9	1.5
South Eastern Hampshire	1.9	0.4	2.9	3.5	12.6	3.4	1.2
South Kent Coast	2.7	0.4	4.6	2.6	28.0	2.5	1.0
South Lincolnshire	0.9	0.7	2.7	3.7	1.4	2.1	0.9
South Norfolk	0.8	0.3	2.2	4.1	1.3	3.0	1.1
South Sefton	1.0	0.3	3.2	3.7	33.3	2.3	1.1
South Tees	6.4	1.9	5.9	2.3	54.2	2.1	1.5
South Tyneside	3.7	0.8	4.0	2.1	53.7	2.0	1.0
South Warwickshire	5.8	0.7	1.3	5.3	1.9	3.8	1.5
South West Lincolnshire	1.4	0.6	2.9	4.3	8.7	3.2	1.1
South Worcestershire	2.9	0.7	2.8	3.7	12.4	2.9	1.2
Southampton	9.6	3.4	3.4	3.7	25.2	3.1	1.2
Southend	4.4	2.8	3.1	4.4	28.7	2.6	1.4
Southport and Formby	1.0	0.1	1.7	3.7	0.0	3.6	0.8
Southwark	6.7	24.4	1.6	8.8	26.6	4.0	1.3
St Helens	1.5	0.6	4.5	3.5	30.9	3.6	1.0
Stafford and Surrounds	3.0	0.8	2.3	3.5	5.9	3.4	1.5
Stockport	7.9	1.0	2.2	4.7	12.0	2.7	0.9
Stoke on Trent	14.4	3.1	4.7	2.7	38.9	2.6	1.6
Sunderland	3.3	1.6	5.3	2.6	40.4	1.8	1.4
Surrey Downs	6.2	1.2	1.1	7.5	0.7	3.7	1.2
Surrey Heath	7.7	1.5	1.4	5.4	0.0	4.3	1.9
Sutton	15.5	5.5	1.4	5.7	1.0	2.4	1.1
Swale	1.1	2.2	4.6	2.6	26.2	3.0	1.1
Swindon	13.3	3.4	2.5	3.7	11.3	3.1	0.9
Tameside and Glossop	9.5	3.4	3.1	2.9	15.9	2.0	1.2
Telford and Wrekin	5.7	3.9	4.7	3.1	23.2	4.4	1.6
Thanet	1.8	0.6	5.8	3.9	39.5	2.8	1.2
Thurrock	6.7	11.0	2.0	3.9	11.5	3.0	1.0

Clinical Commissioning Group	Asian or Asian British [§]	Black or Black British [§]	Mother's age <20 years [§]	Mother's age >39 years [§]	Top quintile of child poverty [§]	Multiple birth [§]	Born at 24 to 31 weeks [§]
Tower Hamlets	49.4	6.1	1.0	5.5	71.1	2.7	1.4
Trafford	12.6	3.2	1.5	5.6	10.3	3.4	1.1
Vale Royal	1.6	0.7	3.2	3.7	10.0	4.4	1.7
Vale of York	1.5	0.3	2.3	4.9	3.5	3.1	1.7
Wakefield	4.8	2.2	3.6	2.5	18.3	3.1	1.2
Walsall	20.6	5.3	4.9	2.6	54.5	2.7	1.5
Waltham Forest	19.0	11.1	1.6	6.2	11.3	4.1	1.0
Wandsworth	8.3	8.5	0.9	8.5	14.1	3.3	0.7
Warrington	3.3	0.8	2.5	4.0	4.1	3.0	1.1
Warwickshire North	5.1	1.9	3.1	2.9	14.4	2.8	1.6
West Cheshire	1.9	0.8	2.4	4.4	11.2	4.3	1.8
West Essex	4.3	3.3	1.4	4.9	1.4	4.0	1.0
West Hampshire	1.9	1.0	2.0	4.4	1.7	3.2	1.0
West Kent	3.0	1.4	2.0	4.3	6.9	3.4	0.9
West Lancashire	0.6	0.0	4.9	2.5	16.1	2.2	0.7
West Leicestershire	5.3	1.0	2.3	3.4	5.7	2.9	1.2
West London	7.5	8.5	0.6	11.2	29.5	2.6	1.3
West Norfolk	1.4	0.3	3.8	3.3	11.4	3.8	0.4
West Suffolk	2.2	0.8	1.9	3.5	1.5	3.4	0.9
Wigan Borough	1.6	1.5	4.1	2.6	16.4	2.5	1.1
Wiltshire	1.7	1.9	1.9	4.3	3.7	3.2	1.0
Wirral	1.6	0.4	3.4	3.9	30.3	2.2	1.2
Wolverhampton	19.1	9.3	4.5	3.7	51.6	3.6	1.2
Wyre Forest	1.8	0.6	3.7	4.1	25.4	2.7	1.3
SCOTLAND							
Ayrshire and Arran	1.2	0.4	4.2	3.2	32.7	4.4	1.6
Borders	0.1	0.0	3.6	4.6	6.9	6.4	0.9
Dumfries and Galloway	0.5	0.0	2.9	2.7	12.6	4.5	1.8
Fife	1.7	0.3	4.1	3.0	24.4	7.2	1.1
Forth Valley	1.4	0.2	2.9	3.6	18.0	5.9	1.4
Grampian	3.2	2.3	2.0	4.0	4.8	5.0	1.2

Clinical Commissioning Group	Asian or Asian British [§]	Black or Black British [§]	Mother's age <20 years [§]	Mother's age >39 years [§]	Top quintile of child poverty [§]	Multiple birth [§]	Born at 24 to 31 weeks [§]
Greater Glasgow and Clyde	3.8	1.3	2.5	4.5	35.7	4.4	1.2
Highland	0.8	0.5	3.1	4.3	7.5	5.5	1.0
Lanarkshire	1.7	0.5	3.2	3.5	21.0	3.5	1.2
Lothian	5.0	1.7	2.3	5.1	16.4	5.2	1.1
Orkney	0.0	0.0	1.6	6.5	0.0	4.3	1.1
Shetland	0.0	0.0	2.0	4.5	0.0	4.5	0.0
Tayside	2.7	0.5	3.6	3.6	22.6	6.5	1.3
Western Isles	0.0	0.0	2.9	5.4	1.0	8.3	0.0
WALES							
Aneurin Bevan University Health Board	3.5	1.0	4.0	2.9	31.5	3.1	1.7
Betsi Cadwaladr University Health Board	0.7	0.4	3.9	3.0	20.1	3.0	1.3
Cardiff and Vale University Health Board	8.5	4.8	3.1	4.9	33.5	3.1	1.5
Cwm Taf Morgannwg University Health Board	0.8	0.3	4.1	2.8	33.2	2.7	1.4
Hywel Dda University Health Board	0.3	0.1	3.9	3.7	17.9	2.4	1.1
Powys Teaching Health Board	0.4	0.2	3.1	3.9	9.0	3.8	1.2
Swansea Bay University Health Board	0.9	0.4	3.9	3.3	39.3	2.6	1.5
NORTHERN IRELAND							
Belfast	1.5	1.9	4.3	4.5	51.6	3.1	1.5
Northern	0.4	0.5	2.7	4.3	18.9	2.8	0.9
South Eastern	0.5	0.4	2.7	4.3	19.6	3.1	1.1
Southern	0.3	0.8	2.3	4.5	16.6	2.7	0.9
Western	0.5	0.1	1.9	4.6	36.8	2.6	1.1
GUERNSEY	0.0	0.0	1.3	6.5	0.0	97.3	0.8
JERSEY	0.0	0.1	1.8	7.4	0.0	2.7	0.9
ISLE OF MAN	1.8	2.0	2.8	4.8	0.0	3.4	0.8

[§] Percentage of all births in each commissioning organisation which fall within this category
Data sources: MBRRACE-UK, PDS, ONS, NRS, PHS, NIMATS, States of Guernsey, States of Jersey
© 2021, re-used with the permission of NHS Digital. All rights reserved.

2.2 Population characteristics by Sustainability and Transformation Partnerships (England), or country of residence

The shading in Table 10 represents the quintiles of all STPs or countries of residence:

- 5th quintile: highest 20% of commissioning organisations;
- 4th quintile
- 3rd quintile
- 2nd quintile
- 1st quintile: lowest 20% of commissioning organisations.

Example: 5.0% of mothers giving birth in Bath, Swindon and Wiltshire STP are Asian or Asian British, which places this STP in the 3rd quintile of STPs for this population characteristic.

Table 10: Proportion of mothers giving birth in population characteristic groups by Sustainability and Transformation Partnerships (England) or country of residence, for births in 2019

Sustainability and Transformation Partnership	Asian or Asian British [§]	Black or Black British [§]	Mother's age <20 years [§]	Mother's age >39 years [§]	Top quintile of child poverty [§]	Multiple birth [§]	Born at 24 to 31 weeks [§]
Bath, Swindon and Wiltshire	5.0	2.1	2.0	4.1	5.6	2.9	0.9
Birmingham and Solihull	30.9	7.8	3.0	4.2	46.4	2.9	1.5
Bristol, North Somerset and South Gloucestershire	4.5	4.9	2.1	4.5	17.2	3.2	1.2
Buckinghamshire, Oxfordshire and Berkshire West	11.5	2.6	1.6	5.3	2.7	2.9	1.1
Cambridgeshire and Peterborough	8.1	2.0	2.4	5.0	6.0	3.2	1.1
Cheshire and Merseyside	2.0	1.1	3.1	3.7	27.2	3.0	1.2
Cornwall and the Isles of Scilly	0.5	0.1	2.9	3.8	12.9	2.2	1.5
Coventry and Warwickshire	10.1	4.9	2.7	4.1	17.2	3.2	1.6
Cumbria and North East	3.6	1.4	4.4	2.9	34.0	2.6	1.3
Derbyshire	6.0	1.4	3.3	3.1	20.9	3.0	1.2
Devon	1.4	0.5	3.1	3.9	12.7	3.2	1.3
Dorset	2.2	0.6	2.4	3.8	8.1	2.5	1.1
Frimley Health	20.2	3.1	1.3	5.5	0.2	3.2	1.1
Gloucestershire	2.6	1.1	2.0	4.7	7.9	3.3	1.1
Greater Manchester	16.5	6.0	2.9	3.9	27.6	2.6	1.3
Hampshire and the Isle of Wight	4.1	1.7	2.7	3.9	11.1	3.1	1.2
Herefordshire and Worcestershire	3.0	0.6	2.7	3.5	11.0	3.3	1.3
Hertfordshire and West Essex	7.8	3.3	1.5	5.3	2.9	3.6	1.2

Sustainability and Transformation Partnership	Asian or Asian British [§]	Black or Black British [§]	Mother's age <20 years [§]	Mother's age >39 years [§]	Top quintile of child poverty [§]	Multiple birth [§]	Born at 24 to 31 weeks [§]
Humber, Coast and Vale	1.9	0.7	4.0	3.2	26.2	3.0	1.5
Kent and Medway	4.2	3.4	3.4	3.7	18.6	3.3	1.1
Lancashire and South Cumbria	13.3	0.5	3.9	2.9	16.8	2.7	1.1
Leicester, Leicestershire and Rutland	18.8	3.0	2.5	4.1	14.2	2.9	1.3
Lincolnshire	1.3	0.6	3.6	3.2	15.5	2.6	1.1
Mid and South Essex	3.6	4.0	2.2	4.0	12.0	3.3	1.1
Milton Keynes, Bedfordshire and Luton	19.1	6.5	2.2	4.4	9.3	3.2	1.4
Norfolk and Waveney	1.8	0.9	3.2	3.7	12.6	3.4	1.1
North Central London	9.8	13.2	1.6	7.4	31.4	3.3	1.1
North East London	30.9	11.8	1.6	5.5	22.2	3.2	1.3
North West London	28.0	9.2	1.3	7.0	10.6	3.3	1.4
Northamptonshire	4.8	4.5	3.1	3.5	8.1	2.9	1.1
Nottinghamshire	8.0	4.3	3.3	3.6	32.0	3.0	1.3
Shropshire and Telford and Wrekin	3.0	1.8	3.6	3.2	13.9	3.4	1.1
Somerset	1.3	0.4	2.8	3.1	5.3	2.4	1.1
South East London	7.2	18.2	1.7	7.0	22.1	3.6	1.3
South West London	13.1	9.9	1.3	7.6	5.8	3.2	1.0
South Yorkshire and Bassetlaw	6.2	2.9	4.0	3.2	37.1	2.9	1.2
Staffordshire	6.9	1.4	3.4	3.2	16.6	2.8	1.3
Suffolk and North East Essex	2.6	1.7	3.2	3.4	13.1	2.9	1.2
Surrey Heartlands	8.8	1.3	1.3	6.7	2.9	3.3	1.1
Sussex and East Surrey	4.5	1.6	2.1	5.4	8.9	3.4	1.3
The Black Country	25.0	9.0	3.9	3.4	48.4	2.9	1.3
West Yorkshire	19.7	3.6	3.2	3.6	28.2	2.6	1.3
Scotland	2.8	1.0	2.9	4.1	21.3	5.0	1.2
Wales	2.6	1.2	3.8	3.4	28.3	2.9	1.4
Northern Ireland	0.6	0.7	2.8	4.4	27.6	2.9	1.1

[§] Percentage of births in each commissioning organisation which fall within this category
Data sources: MBRRACE-UK, PDS, ONS, NRS, PHS, NIMATS
© 2021, re-used with the permission of NHS Digital. All rights reserved.

2.3 Population characteristics by Local Authority

The shading in Table 11, below, represents the quintiles of all Local Authorities:

- **5th quintile**: highest 20% of Local Authorities;
- **4th quintile**
- **3rd quintile**
- **2nd quintile**
- **1st quintile**: lowest 20% of Local Authorities.

Example: 27.5% of mothers giving birth in Barking and Dagenham are Asian or Asian British, which places this Local Authority in the **5th quintile** or highest 20% of Local Authorities for this population characteristic.

Table 11: Proportion of mothers giving birth in population characteristic groups by Local Authority, for births in 2018

Local Authority	Asian or Asian British [§]	Black or Black British [§]	Mother's age <20 years [§]	Mother's age >39 years [§]	Top quintile of child poverty [§]	Multiple birth [§]	Born at 24 to 31 weeks [§]
ENGLAND							
Barking and Dagenham	27.5	20.0	2.7	5.1	10.3	3.7	1.7
Barnet	13.3	7.8	0.8	6.6	6.1	3.0	0.8
Barnsley	0.4	0.7	4.0	2.1	32.0	2.6	1.2
Bath and North East Somerset	0.8	0.5	1.8	4.2	1.8	2.2	0.7
Bedford	13.6	4.9	2.9	4.3	7.1	2.9	1.4
Bexley	9.0	13.6	2.1	4.3	9.6	3.0	1.0
Birmingham	36.2	11.1	3.0	4.1	52.7	3.0	1.5
Blackburn with Darwen	43.8	0.7	4.3	2.8	23.2	2.3	1.3
Blackpool	2.2	0.7	5.9	2.6	41.3	3.7	1.1
Bolton	25.7	6.1	3.1	3.5	26.9	3.0	1.6
Bournemouth, Christchurch and Poole	2.8	0.9	2.3	3.7	10.8	2.0	0.9
Bracknell Forest	6.0	1.8	0.8	4.1	0.0	2.6	0.5
Bradford	40.2	2.1	3.4	3.3	37.6	2.4	1.7
Brent	29.9	13.8	1.8	6.3	9.5	3.1	1.4
Brighton and Hove	4.1	2.1	1.9	9.2	16.3	4.2	1.4
Bristol, City of	5.7	8.1	1.9	5.2	27.1	3.7	1.4
Bromley	6.7	6.7	1.2	7.0	13.7	3.9	1.0
Buckinghamshire	16.1	2.5	1.2	5.8	0.2	2.8	1.1
Bury	15.0	2.5	2.5	4.2	11.9	2.9	1.6
Calderdale	15.4	0.8	3.2	3.5	25.6	3.0	1.3

Local Authority	Asian or Asian British [§]	Black or Black British [§]	Mother's age <20 years [§]	Mother's age >39 years [§]	Top quintile of child poverty [§]	Multiple birth [§]	Born at 24 to 31 weeks [§]
Cambridgeshire	4.3	1.3	1.8	5.4	2.7	3.3	1.0
Camden	14.8	8.6	1.2	8.9	52.6	3.4	0.8
Central Bedfordshire	3.7	2.8	1.9	4.4	5.3	3.7	1.1
Cheshire East	2.3	0.5	2.1	4.4	3.5	2.5	0.5
Cheshire West and Chester	1.8	0.8	2.6	4.2	10.8	4.3	1.8
Cornwall	0.5	0.1	2.9	3.8	12.9	2.2	1.6
County Durham	0.9	0.3	4.8	2.5	32.6	3.1	1.2
Coventry	16.3	9.6	3.1	3.7	32.8	3.2	1.5
Croydon	16.8	20.2	2.2	6.1	4.5	3.0	1.1
Cumbria	0.5	0.1	3.2	2.9	8.5	2.7	1.1
Darlington	3.2	0.3	5.0	3.0	34.5	2.6	1.9
Derby	16.5	3.7	4.0	2.8	35.2	2.7	1.0
Derbyshire	1.5	0.4	2.9	3.3	14.5	3.0	1.2
Devon	1.1	0.2	2.4	4.5	4.4	3.5	1.1
Doncaster	3.7	1.5	4.8	2.6	37.0	2.3	1.2
Dorset	1.3	0.3	2.5	3.8	4.6	3.0	1.4
Dudley	12.5	2.6	3.7	2.9	34.5	2.3	0.9
Ealing	30.3	10.2	1.2	7.5	8.3	3.7	1.8
East Riding of Yorkshire	0.8	0.3	3.2	3.2	8.6	2.6	1.5
East Sussex	2.3	0.7	2.7	4.5	17.2	3.6	1.3
Enfield	8.3	18.0	2.5	6.9	30.2	3.4	1.6
Essex	3.0	2.6	2.1	4.0	9.7	3.4	1.1
Gateshead	2.4	1.6	3.6	3.4	29.3	3.5	1.0
Gloucestershire	2.6	1.1	2.0	4.7	7.9	3.3	1.1
Greenwich	10.8	18.9	2.0	6.2	25.5	3.7	1.6
Hackney and City of London	7.9	16.0	1.5	7.4	37.5	2.6	1.4
Halton	0.9	0.2	5.3	3.7	26.3	3.0	1.3
Hammersmith and Fulham	6.0	11.5	0.8	8.9	19.2	2.9	0.8
Hampshire	3.5	1.2	2.2	4.2	3.7	3.2	1.1
Haringey	5.9	16.4	1.9	7.7	33.2	3.2	1.3
Harrow	38.2	5.2	1.3	4.7	0.0	3.3	1.6
Hartlepool	1.9	0.6	6.3	2.3	59.7	1.9	1.4

Local Authority	Asian or Asian British [§]	Black or Black British [§]	Mother's age <20 years [§]	Mother's age >39 years [§]	Top quintile of child poverty [§]	Multiple birth [§]	Born at 24 to 31 weeks [§]
Havering	13.6	8.1	2.0	4.3	10.4	3.2	1.5
Herefordshire, County of	0.9	0.4	2.5	3.4	3.4	3.3	1.7
Hertfordshire	8.6	3.2	1.5	5.4	3.3	3.4	1.2
Hillingdon	36.6	8.1	1.5	5.8	6.1	3.8	1.5
Hounslow	37.2	7.1	1.5	6.1	1.9	2.7	1.4
Isle of Wight	0.9	0.7	4.6	3.0	18.2	3.4	1.5
Isles of Scilly	0.0	0.0	0.0	0.0	0.0	0.0	0.0
Islington	6.5	15.0	1.1	8.0	57.6	3.7	1.0
Kensington and Chelsea	5.5	7.8	0.5	12.0	19.5	2.5	1.2
Kent	4.1	3.0	3.4	3.8	17.4	3.3	1.1
Kingston upon Hull, City of	2.7	2.0	4.5	2.1	53.5	2.6	1.7
Kingston upon Thames	13.2	2.5	1.1	6.3	1.2	3.4	0.9
Kirklees	25.7	2.0	2.8	3.5	19.8	2.6	1.2
Knowsley	0.7	0.6	3.0	2.3	48.0	2.8	1.2
Lambeth	4.7	22.3	1.7	7.6	30.6	3.8	1.6
Lancashire	11.6	0.5	3.8	2.9	13.5	2.6	1.1
Leeds	11.0	7.5	3.3	4.1	35.0	2.7	1.0
Leicester	35.2	5.9	3.1	4.4	30.1	2.9	1.4
Leicestershire	8.0	0.9	2.1	3.8	3.6	2.9	1.2
Lewisham	6.0	21.1	1.7	7.2	22.9	3.3	1.3
Lincolnshire	1.3	0.6	3.6	3.2	15.5	2.6	1.1
Liverpool	3.1	3.1	3.2	3.4	53.4	3.0	1.3
Luton	44.3	7.8	2.3	4.3	16.9	3.2	1.8
Manchester	23.3	13.8	2.4	4.8	48.0	2.6	1.5
Medway	5.1	5.4	3.4	3.4	24.7	3.3	1.4
Merton	17.1	8.1	1.1	8.1	5.8	3.6	0.9
Middlesbrough	10.6	3.3	5.9	2.1	59.1	1.8	1.5
Milton Keynes	13.6	10.1	2.2	4.5	7.4	2.8	1.2
Newcastle upon Tyne	11.5	5.3	4.3	3.8	42.1	2.3	1.3
Newham	42.1	14.4	1.3	4.4	11.4	3.0	1.2
Norfolk	2.0	1.0	3.2	3.8	11.4	3.4	1.1
North East Lincolnshire	1.3	0.2	6.1	2.1	51.0	3.3	1.6

Local Authority	Asian or Asian British [§]	Black or Black British [§]	Mother's age <20 years [§]	Mother's age >39 years [§]	Top quintile of child poverty [§]	Multiple birth [§]	Born at 24 to 31 weeks [§]
North Lincolnshire	4.4	0.4	4.8	3.3	21.4	2.8	1.3
North Somerset	1.4	0.4	2.6	4.7	13.3	3.2	1.1
North Tyneside	1.9	0.7	3.1	3.9	18.8	2.4	1.3
North Yorkshire	1.1	0.4	2.4	4.0	4.5	3.4	1.4
Northamptonshire	4.8	4.5	3.1	3.6	8.0	2.9	1.1
Northumberland	0.8	0.1	4.3	3.2	26.6	2.8	1.0
Nottingham	16.8	9.4	3.7	3.9	60.5	3.0	1.7
Nottinghamshire	2.8	1.3	3.3	3.4	15.7	3.1	1.1
Oldham	32.4	3.9	4.0	3.7	36.1	2.3	1.4
Oxfordshire	6.9	2.0	1.7	4.8	3.4	2.8	1.0
Peterborough	17.9	3.7	3.8	3.9	14.5	3.0	1.3
Plymouth	2.1	1.4	4.2	2.7	27.9	2.6	1.5
Portsmouth	6.4	3.5	3.0	3.4	24.0	3.1	1.4
Reading	18.2	7.1	2.3	5.3	8.9	2.5	1.1
Redbridge	47.7	7.0	1.6	5.8	1.0	3.1	1.3
Redcar and Cleveland	0.8	0.2	6.0	2.5	47.8	2.4	1.6
Richmond upon Thames	6.2	2.2	0.7	11.9	1.6	3.2	1.5
Rochdale	24.0	4.2	3.2	2.9	31.7	2.9	1.5
Rotherham	6.4	1.2	4.9	2.5	35.3	3.4	1.3
Rutland	1.8	3.5	2.1	6.4	0.0	5.0	1.8
Salford	4.8	7.9	3.1	3.9	32.0	2.1	1.0
Sandwell	29.0	8.9	3.8	3.9	41.9	2.9	1.3
Sefton	1.0	0.2	2.7	3.7	22.6	2.7	1.0
Sheffield	11.0	6.1	3.1	4.3	44.8	3.1	1.3
Shropshire	0.9	0.2	2.7	3.3	6.6	2.5	0.7
Slough	48.5	6.5	1.9	4.9	0.0	2.7	1.4
Solihull	14.4	1.7	2.0	4.1	23.8	3.2	1.3
Somerset	1.3	0.4	2.8	3.1	5.3	2.4	1.1
South Gloucestershire	4.3	2.0	2.1	3.1	1.8	2.3	1.0
South Tyneside	3.7	0.8	4.0	2.1	53.7	2.0	1.0
Southampton	9.6	3.4	3.4	3.7	25.2	3.1	1.2
Southend-on-Sea	4.4	2.8	3.1	4.4	28.7	2.6	1.4

Local Authority	Asian or Asian British [§]	Black or Black British [§]	Mother's age <20 years [§]	Mother's age >39 years [§]	Top quintile of child poverty [§]	Multiple birth [§]	Born at 24 to 31 weeks [§]
Southwark	6.7	24.4	1.6	8.8	26.6	4.0	1.3
St. Helens	1.5	0.6	4.5	3.5	30.9	3.6	1.0
Staffordshire	3.8	0.7	2.8	3.4	7.6	2.8	1.2
Stockport	7.9	1.0	2.2	4.7	12.0	2.7	0.9
Stockton-on-Tees	5.8	2.0	4.6	3.1	42.7	2.8	1.5
Stoke-on-Trent	14.6	3.2	4.7	2.6	39.5	2.6	1.6
Suffolk	2.3	1.3	3.3	3.3	9.7	3.0	1.2
Sunderland	3.3	1.6	5.3	2.6	40.4	1.8	1.4
Surrey	8.0	1.6	1.3	6.3	2.3	3.3	1.1
Sutton	15.5	5.5	1.4	5.7	1.0	2.4	1.1
Swindon	13.7	3.3	2.5	3.8	11.6	3.2	0.8
Tameside	10.4	3.7	3.2	2.9	16.8	2.1	1.3
Telford and Wrekin	5.7	3.9	4.7	3.1	23.2	4.4	1.6
Thurrock	6.7	11.0	2.0	3.9	11.5	3.0	1.0
Torbay	0.8	0.2	4.1	3.2	24.0	2.8	2.1
Tower Hamlets	49.4	6.1	1.0	5.5	71.1	2.7	1.4
Trafford	12.6	3.2	1.5	5.6	10.3	3.4	1.1
Wakefield	4.8	2.2	3.6	2.5	18.3	3.1	1.2
Walsall	20.6	5.3	4.9	2.6	54.5	2.7	1.5
Waltham Forest	19.0	11.1	1.6	6.2	11.3	4.1	1.0
Wandsworth	8.3	8.5	0.9	8.5	14.1	3.3	0.7
Warrington	3.3	0.8	2.5	4.0	4.1	3.0	1.1
Warwickshire	5.7	1.6	2.4	4.4	6.0	3.2	1.6
West Berkshire	4.5	1.1	2.1	5.0	2.2	3.3	1.1
West Sussex	5.6	1.6	2.0	4.9	4.1	3.2	1.4
Westminster	11.9	7.9	0.7	9.2	40.8	3.6	1.1
Wigan	1.6	1.5	4.1	2.6	16.4	2.5	1.1
Wiltshire	1.7	1.9	1.9	4.3	3.7	3.2	1.0
Windsor and Maidenhead	14.2	1.6	1.0	9.2	0.0	2.9	1.3
Wirral	1.6	0.4	3.4	3.9	30.3	2.2	1.2
Wokingham	12.6	2.0	0.9	5.5	0.0	3.3	1.2
Wolverhampton	19.1	9.3	4.5	3.7	51.6	3.6	1.2

Local Authority	Asian or Asian British [§]	Black or Black British [§]	Mother's age <20 years [§]	Mother's age >39 years [§]	Top quintile of child poverty [§]	Multiple birth [§]	Born at 24 to 31 weeks [§]
Worcestershire	3.6	0.6	2.8	3.6	13.2	3.3	1.2
York	2.2	0.4	2.8	5.4	5.3	2.8	1.5
SCOTLAND							
Aberdeen City	6.0	4.8	2.4	5.0	9.0	3.7	0.9
Aberdeenshire	1.5	0.5	1.6	3.3	1.1	6.0	1.3
Angus	0.4	0.0	3.6	3.1	10.8	9.4	1.0
Argyll and Bute	0.0	0.0	3.6	4.1	9.6	7.7	0.8
City of Edinburgh	7.5	2.4	1.6	6.2	18.8	5.1	1.1
Clackmannanshire	0.5	0.0	4.8	1.7	31.6	4.6	1.7
Dumfries and Galloway	0.5	0.0	2.9	2.7	12.7	4.2	1.8
Dundee City	5.6	1.3	4.6	3.5	46.0	5.5	1.4
East Ayrshire	1.3	0.4	4.6	2.9	30.3	4.4	1.5
East Dunbartonshire	1.2	0.3	0.9	6.6	3.7	5.1	1.1
East Lothian	1.0	0.2	2.8	5.4	5.4	5.8	1.0
East Renfrewshire	5.0	0.0	0.6	7.9	5.0	4.1	0.9
Falkirk	1.8	0.1	2.7	2.3	15.3	5.6	1.6
Fife	1.6	0.3	4.1	3.0	24.5	7.2	1.1
Glasgow City	5.5	2.2	2.9	4.2	47.1	4.6	1.3
Highland	1.1	0.6	2.9	4.4	6.9	4.8	1.1
Inverclyde	0.2	0.0	1.9	4.5	34.0	4.4	1.3
Midlothian	2.8	1.2	2.4	3.8	14.9	4.7	1.0
Moray	0.6	0.6	1.8	3.5	4.2	5.3	1.6
Na h-Eileanan Siar	0.0	0.0	3.0	5.4	1.0	8.4	0.0
North Ayrshire	1.2	0.4	4.5	2.5	46.3	4.5	2.0
North Lanarkshire	1.8	0.5	4.1	3.6	23.8	3.9	1.5
Orkney Islands	0.0	0.0	1.7	6.6	0.0	4.4	1.1
Perth and Kinross	0.9	0.1	2.5	4.3	4.6	5.3	1.5
Renfrewshire	1.0	0.2	2.0	3.9	24.8	3.9	1.3
Scottish Borders	0.1	0.0	3.6	4.5	7.3	5.0	0.9
Shetland Islands	0.0	0.0	2.0	4.5	0.0	4.5	0.0
South Ayrshire	1.2	0.2	3.3	4.3	18.4	4.0	1.2
South Lanarkshire	1.6	0.6	2.2	3.5	18.0	2.9	0.9

Local Authority	Asian or Asian British [§]	Black or Black British [§]	Mother's age <20 years [§]	Mother's age >39 years [§]	Top quintile of child poverty [§]	Multiple birth [§]	Born at 24 to 31 weeks [§]
Stirling	1.2	0.5	2.3	7.1	16.0	7.4	0.9
West Dunbartonshire	0.6	0.4	4.6	1.9	36.6	2.5	1.2
West Lothian	2.0	1.1	3.6	3.1	17.2	5.5	1.4
WALES							
Blaenau Gwent	0.9	0.0	5.0	3.0	47.4	2.7	0.8
Bridgend	0.3	0.1	3.9	3.2	29.4	2.2	0.9
Caerphilly	0.7	0.1	4.5	1.9	32.9	2.6	1.4
Cardiff	10.7	6.1	3.2	5.1	37.8	2.9	1.6
Carmarthenshire	0.4	0.0	4.6	3.7	18.9	2.3	0.7
Ceredigion	0.0	0.2	2.7	4.0	4.6	2.7	1.0
Conwy	0.6	0.1	4.0	3.2	18.8	3.2	1.1
Denbighshire	0.6	0.1	5.6	3.0	29.7	4.1	1.2
Flintshire	0.4	0.3	3.4	2.6	13.0	2.8	1.2
Gwynedd	1.3	1.0	3.1	3.5	9.5	3.0	0.7
Isle of Anglesey	0.5	0.4	2.7	3.7	26.3	2.8	0.7
Merthyr Tydfil	0.8	0.2	5.1	1.5	26.7	2.9	3.2
Monmouthshire	1.0	0.0	1.6	4.8	2.3	2.9	1.2
Neath Port Talbot	0.6	0.2	4.8	2.4	40.4	2.2	1.4
Newport	9.2	3.2	3.8	3.2	34.4	3.4	2.4
Pembrokeshire	0.3	0.1	3.3	3.6	22.8	2.5	1.8
Powys	0.4	0.2	3.1	3.9	9.0	3.8	1.2
Rhondda Cynon Taf	1.0	0.4	3.9	2.9	37.1	3.0	1.1
Swansea	1.1	0.5	3.4	3.8	38.6	2.9	1.5
Torfaen	1.0	0.1	4.7	2.7	31.3	3.5	1.9
Vale of Glamorgan	1.7	0.7	2.7	4.0	20.0	3.9	1.3
Wrexham	1.0	0.5	4.3	2.4	26.7	2.5	2.1
NORTHERN IRELAND							
Antrim and Newtownabbey	0.9	0.5	3.1	3.9	22.0	2.9	1.1
Ards and North Down	0.8	0.1	2.1	5.1	22.6	3.4	1.2
Armagh City, Banbridge and Craigavon	0.6	0.8	2.6	3.9	11.2	2.7	1.2
Belfast	1.5	1.8	4.7	4.1	58.6	2.8	1.4
Causeway Coast and Glens	0.1	0.3	2.6	4.4	23.0	2.4	0.7

Local Authority	Asian or Asian British [§]	Black or Black British [§]	Mother's age <20 years [§]	Mother's age >39 years [§]	Top quintile of child poverty [§]	Multiple birth [§]	Born at 24 to 31 weeks [§]
Derry City and Strabane	0.5	0.2	2.0	4.3	57.0	2.4	1.0
Fermanagh and Omagh	0.6	0.0	1.8	5.2	14.3	3.0	1.4
Lisburn and Castlereagh	0.6	0.8	1.9	4.8	3.7	3.4	1.4
Mid Ulster	0.1	1.2	1.8	5.2	6.6	2.7	0.5
Mid and East Antrim	0.3	0.3	2.9	3.9	24.7	2.9	1.0
Newry, Mourne and Down	0.1	0.2	2.7	4.7	25.2	2.9	0.7
GUERNSEY	0.0	0.0	1.3	6.5	0.0	97.3	0.8
JERSEY	0.0	0.1	1.8	7.4	0.0	2.7	0.9
ISLE OF MAN	1.8	2.0	2.8	4.8	0.0	3.4	0.6

[§] Percentage of all births in each LA which fall within this category

Data sources: MBRRACE-UK, PDS, ONS, NRS, PHS, NIMATS, States of Guernsey, States of Jersey

© 2021, re-used with the permission of NHS Digital. All rights reserved.

3. Causes of death

3.1 Reported causes of death

Table 12: Stillbirths by CODAC level 1 cause of death: United Kingdom and Crown Dependencies, for births in 2015 to 2019

CODAC cause of death: level 1	2015	2016	2017	2018	2019
	N (%)	N (%)	N (%)	N (%)	N (%)
Infection	116 (3.8)	108 (3.5)	121 (4.3)	101 (3.9)	94 (3.9)
Neonatal	45 (1.5)	42 (1.4)	41 (1.4)	42 (1.6)	39 (1.6)
Intrapartum	84 (2.8)	71 (2.3)	51 (1.8)	53 (2.1)	30 (1.3)
Congenital anomaly	268 (8.8)	280 (9.1)	262 (9.2)	249 (9.7)	223 (9.3)
Fetal	150 (4.9)	149 (4.9)	113 (4)	109 (4.2)	93 (3.9)
Cord	140 (4.6)	130 (4.2)	148 (5.2)	127 (4.9)	128 (5.3)
Placenta	822 (27.1)	882 (28.8)	904 (31.8)	780 (30.2)	800 (33.3)
Maternal	129 (4.3)	122 (4.0)	103 (3.6)	88 (3.4)	94 (3.9)
Unknown	1197 (39.5)	1145 (37.4)	982 (34.6)	853 (35.1)	756 (31.5)
Missing	83 (2.7)	136 (4.4)	115 (4)	177 (6.9)	142 (5.9)

Table 13: Neonatal deaths by CODAC level 1 and level 2 cause of death: United Kingdom and Crown Dependencies, for births in 2015 to 2019

CODAC cause of death	2015	2016	2017	2018	2019
	N (%)	N (%)	N (%)	N (%)	N (%)
Infection	97 (7.1)	101 (7.6)	95 (7.5)	84 (7.0)	101 (8.7)
Neonatal	603 (43.9)	586 (43.8)	517 (40.8)	491 (41)	467 (40.3)
Unspecified or other	36 (2.6)	29 (2.2)	19 (1.5)	24 (2.0)	34 (2.9)
Extreme prematurity	194 (14.1)	210 (15.7)	155 (12.2)	154 (12.8)	136 (11.7)
Neurological	177 (12.9)	157 (11.7)	139 (11)	136 (11.3)	121 (10.4)
Cardio-respiratory	148 (10.8)	127 (9.5)	119 (9.4)	109 (9.1)	107 (9.2)
Gastrointestinal	62 (4.5)	43 (3.2)	57 (4.5)	31 (2.6)	41 (3.5)
Multi-organ failure	33 (2.4)	16 (1.2)	20 (1.6)	28 (2.3)	17 (1.5)
Trauma or suffocation	2 (0.1)	4 (0.3)	7 (0.6)	7 (0.6)	10 (0.9)
Inadequate care	1 (0.1)	0 (0.0)	1 (0.1)	2 (0.2)	1 (0.1)
Intrapartum	34 (2.5)	27 (2.0)	46 (3.6)	25 (2.1)	26 (2.2)
Congenital anomaly	454 (33.1)	448 (33.5)	458 (36.1)	426 (35.5)	407 (35.1)
Fetal	35 (2.5)	49 (3.7)	40 (3.2)	40 (3.3)	36 (3.1)
Cord	5 (0.4)	2 (0.1)	1 (0.1)	3 (0.3)	4 (0.3)
Placenta	40 (2.9)	31 (2.3)	25 (2.0)	36 (3.0)	27 (2.3)
Maternal	2 (0.1)	5 (0.4)	4 (0.3)	5 (0.4)	8 (0.7)
Unknown	55 (4.0)	65 (4.9)	49 (3.9)	58 (4.8)	59 (5.1)
Missing	48 (3.5)	23 (1.7)	32 (2.5)	31 (2.6)	23 (2.0)

Excluding terminations of pregnancy and births <24⁺ weeks gestational age
Data source: MBRRACE-UK

Table 14: Stillbirth rates by CODAC level 1 cause of death: United Kingdom and Crown Dependencies, for births in 2015 to 2019

CODAC cause of death: level 1	Rate per 1,000 total births				
	2015	2016	2017	2018	2019
Infection	0.15	0.14	0.16	0.14	0.13
Neonatal	0.06	0.05	0.05	0.06	0.05
Intrapartum	0.11	0.09	0.07	0.07	0.04
Congenital anomaly	0.34	0.36	0.34	0.34	0.31
Fetal	0.19	0.19	0.15	0.15	0.13
Cord	0.18	0.17	0.19	0.17	0.18
Placenta	1.05	1.13	1.19	1.06	1.12
Maternal	0.16	0.16	0.14	0.12	0.13
Unknown	1.53	1.47	1.29	1.16	1.05
Missing	0.11	0.17	0.15	0.24	0.20

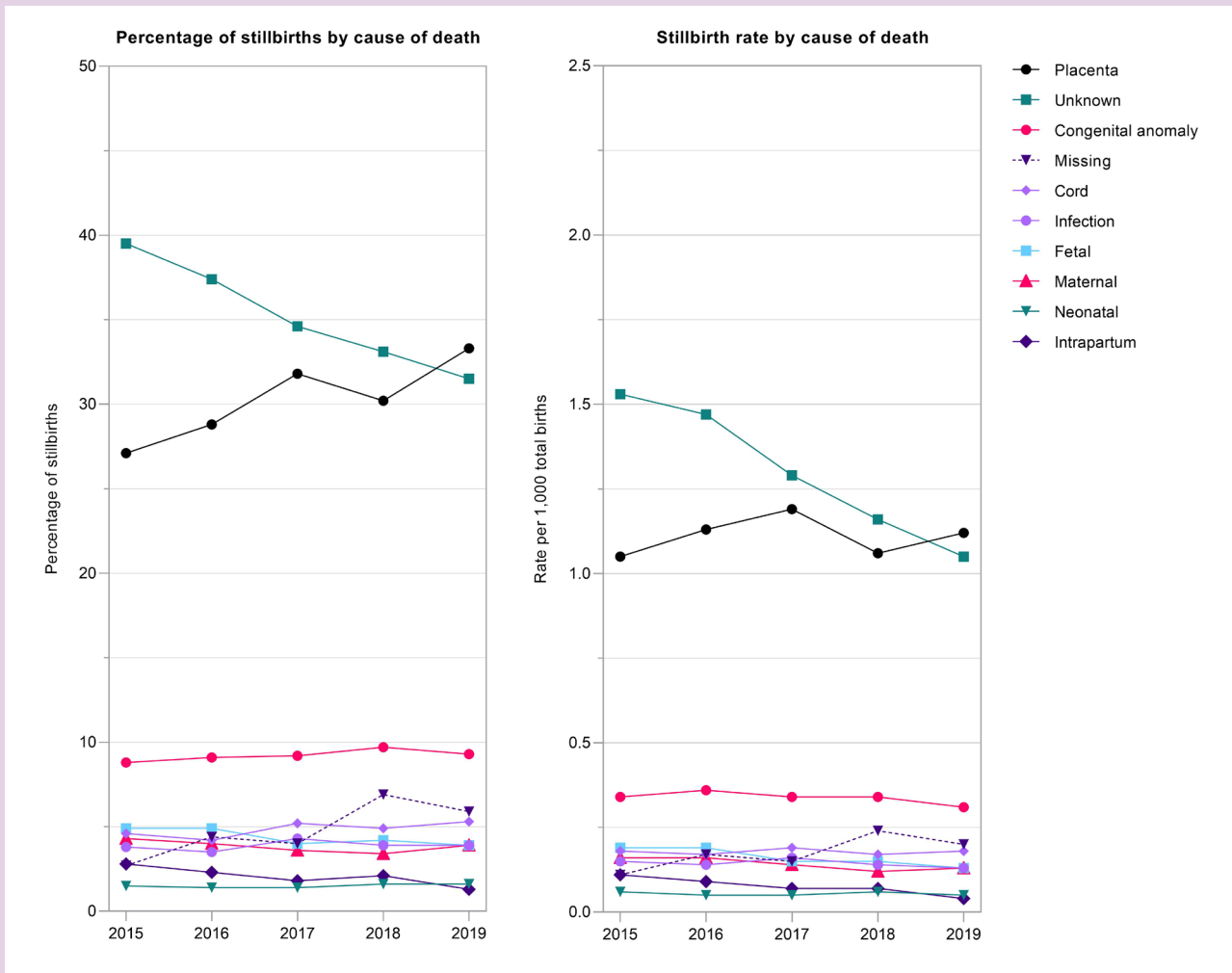
Excluding terminations of pregnancy and births <24⁺⁰ weeks gestational age
 Data sources: MBRRACE-UK, PDS, ONS, NRS, PHS, NIMATS, States of Guernsey, States of Jersey
 © 2021, re-used with the permission of NHS Digital. All rights reserved.

Table 15: Neonatal mortality rates by CODAC level 1 and level 2 cause of death: United Kingdom and Crown Dependencies, for births in 2015 to 2019

CODAC cause of death	Rate per 1,000 live births				
	2015	2015	2015	2015	2015
Infection	0.12	0.13	0.13	0.11	0.14
Neonatal	0.77	0.75	0.68	0.67	0.65
Unspecified or other	0.05	0.04	0.03	0.03	0.05
Extreme prematurity	0.25	0.27	0.20	0.21	0.19
Neurological	0.23	0.20	0.18	0.19	0.17
Cardio-respiratory	0.19	0.16	0.16	0.15	0.15
Gastrointestinal	0.08	0.06	0.08	0.04	0.06
Multi-organ failure	0.04	0.02	0.03	0.04	0.02
Trauma or suffocation	0.00	0.01	0.01	0.01	0.01
Inadequate care	0.00	0.00	0.00	0.00	0.00
Intrapartum	0.04	0.03	0.06	0.03	0.04
Congenital anomaly	0.58	0.58	0.60	0.58	0.57
Fetal	0.04	0.06	0.05	0.05	0.05
Cord	0.01	0.00	0.00	0.00	0.01
Placenta	0.05	0.04	0.03	0.05	0.04
Maternal	0.00	0.01	0.01	0.01	0.01
Unknown	0.07	0.08	0.06	0.08	0.08
Missing	0.06	0.03	0.04	0.04	0.03

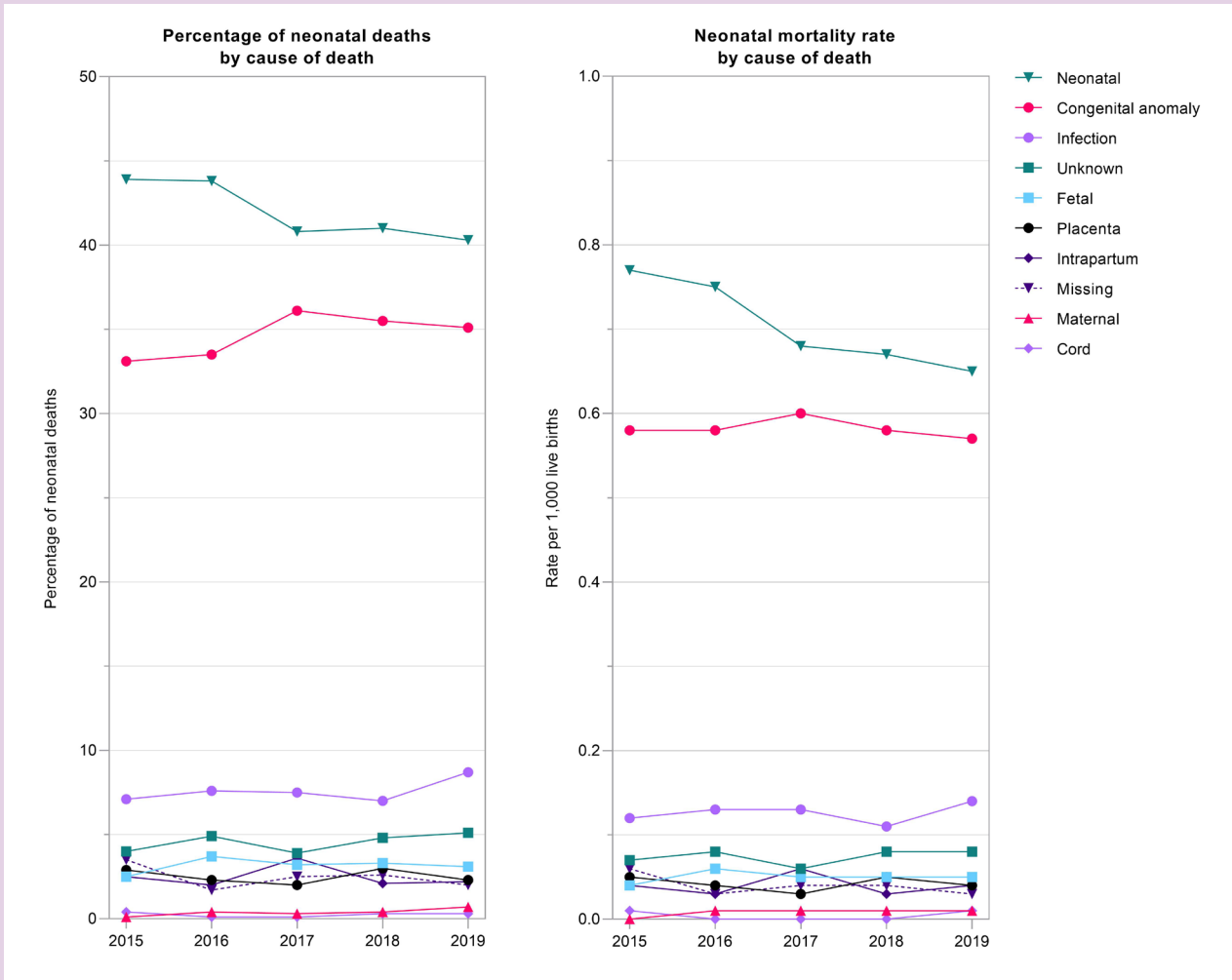
Excluding terminations of pregnancy and births <24⁺⁰ weeks gestational age
 Data sources: MBRRACE-UK, PDS, ONS, NRS, PHS, NIMATS, States of Guernsey, States of Jersey
 © 2021, re-used with the permission of NHS Digital. All rights reserved.

Figure 1: Stillbirths by CODAC level 1 cause of death: United Kingdom and Crown Dependencies, for births in 2015 to 2019



Excluding terminations of pregnancy and births <24⁺⁰ weeks gestational age
 Data sources: MBRRACE-UK, PDS, ONS, NRS, PHS, NIMATS, States of Guernsey, States of Jersey
 © 2021, re-used with the permission of NHS Digital. All rights reserved

Figure 2: Neonatal deaths by CODAC level 1 cause of death: United Kingdom and Crown Dependencies, for births in 2015 to 2019

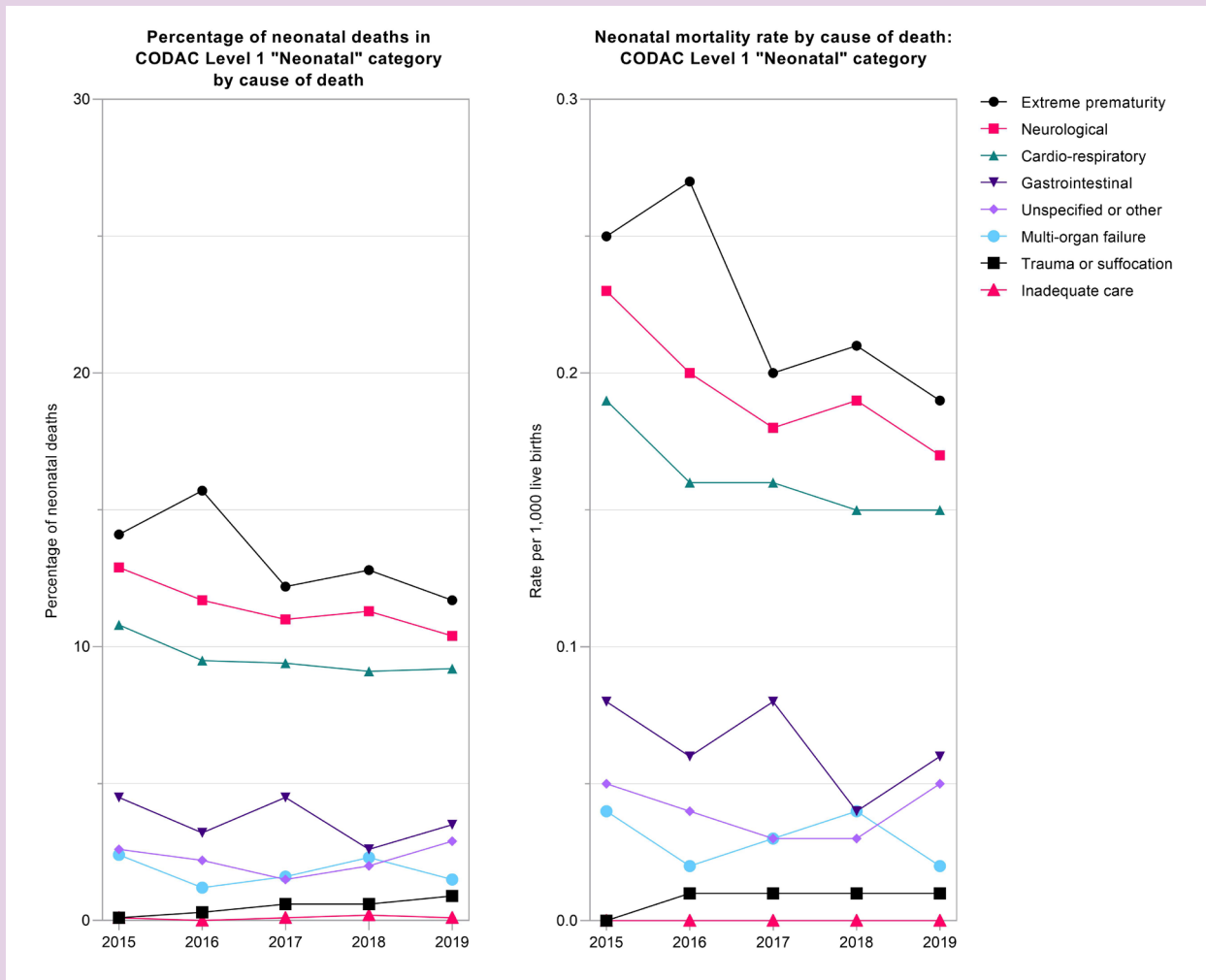


Excluding terminations of pregnancy and births <24⁺⁰ weeks gestational age

Data sources: MBRRACE-UK, PDS, ONS, NRS, PHS, NIMATS, States of Guernsey, States of Jersey

© 2021, re-used with the permission of NHS Digital. All rights reserved

Figure 3: Neonatal deaths in CODAC level 1 “Neonatal” category by CODAC level 2 cause of death: United Kingdom and Crown Dependencies, for births in 2015 to 2019



Excluding terminations of pregnancy and births <24+0 weeks gestational age
 Data sources: MBRRACE-UK, PDS, ONS, NRS, PHS, NIMATS, States of Guernsey, States of Jersey
 © 2021, re-used with the permission of NHS Digital. All rights reserved

3.2 Post-mortem examination

Table 16: Number and percentage of post-mortems offered and consented to by type of death (stillbirth, neonatal death, extended perinatal death): United Kingdom and Crown Dependencies, for births in 2019

Post-mortem status*	Stillbirths [§]		Neonatal deaths [§]		Extended perinatal deaths [§]	
	Number	(%)	Number	(%)	Number	(%)
Not offered	32	(1.3)	73	(6.3)	105	(3.0)
Not known if offered	25	(1.0)	107	(9.2)	132	(3.7)
Offered but no consent	1109	(46.2)	591	(51.0)	1700	(47.8)
Offered but unknown consent	11	(0.5)	25	(2.2)	36	(1.0)
Offered and limited consent	138	(5.8)	21	(1.8)	159	(4.5)
Offered and full consent	1076	(44.9)	303	(26.2)	1379	(38.8)
Not offered but discussed with / accepted by coroner or procurator fiscal	8	(0.3)	38	(3.3)	46	(1.3)

[§] Excluding terminations of pregnancy and births <24⁺⁰ weeks gestational age
Data source: MBRRACE-UK

Table 17: Number and percentage of placental histology examinations by type of death (stillbirths and neonatal deaths): United Kingdom and Crown Dependencies, for births in 2019

Placental histology status	Stillbirths [§]		Neonatal deaths ^{§‡}	
	Number	(%)	Number	(%)
With placental histology	2229	(93.0)	251	(77.6)
Without placental histology	169	(7.0)	74	(22.4)

[§] Excluding terminations of pregnancy and births <24⁺⁰ weeks gestational age
[‡] Neonatal deaths on day 1 of life or with an intrapartum cause of death
Data source: MBRRACE-UK

4. Factors affecting perinatal mortality

4.1 Mortality rates and ratios of mortality rates: mothers' characteristics

Table 18: Stillbirth rates by socio-economic deprivation quintile of residence by year: United Kingdom and Crown Dependencies, for births in 2015 to 2019

Socio-economic deprivation quintile*		2015	2016	2017	2018	2019
1 - Least deprived	Stillbirths N (%)	464 (15.3)	456 (14.9)	424 (14.9)	387 (15.0)	330 (13.8)
	Rates per 1,000 births [†]	3.00	2.96	2.81	2.61	2.33
2	Stillbirths N (%)	513 (16.9)	546 (17.8)	471 (16.6)	400 (15.5)	387 (16.1)
	Rates per 1,000 births [†]	3.25	3.48	3.12	2.77	2.69
3	Stillbirths N (%)	570 (18.8)	608 (19.8)	545 (19.2)	504 (19.5)	478 (19.9)
	Rates per 1,000 births [†]	3.68	3.95	3.58	3.41	3.32
4	Stillbirths N (%)	690 (22.7)	671 (21.9)	660 (23.2)	596 (23.1)	528 (22.0)
	Rates per 1,000 births [†]	4.44	4.33	4.34	4.09	3.73
5 - Most deprived	Stillbirths N (%)	787 (25.9)	764 (24.9)	733 (25.8)	686 (26.6)	670 (27.9)
	Rates per 1,000 births [†]	5.05	4.91	4.84	4.68	4.67
Not known	Stillbirths N (%)	10 (0.3)	20 (0.7)	7 (0.2)	6 (0.2)	6 (0.25)
	Rates per 1,000 births [†]	2.09	4.33	2.74	2.40	2.43

[§] excluding terminations of pregnancy and births <24⁺⁰ weeks gestational age

[†] per 1,000 total births

* based on mothers' postcodes at time of birth, using the Children in Low-Income Families Local Measure

Data sources: MBRRACE-UK, PDS, ONS, NRS, PHS, NIMATS, States of Guernsey, States of Jersey

© 2021, re-used with the permission of NHS Digital. All rights reserved.

Table 19: Neonatal mortality rates by mothers' socio-economic deprivation quintile of residence by year: United Kingdom and Crown Dependencies, for births in 2015 to 2019

Socio-economic deprivation quintile*		2015	2016	2017	2018	2019
1 - Least deprived	Neonatal deaths N (%)	218 (15.9)	186 (13.9)	199 (15.7)	182 (15.2)	169 (14.6)
	Rates per 1,000 births [‡]	1.41	1.21	1.32	1.23	1.20
2	Neonatal deaths N (%)	237 (17.3)	234 (17.5)	212 (16.7)	202 (16.8)	192 (16.6)
	Rates per 1,000 births [‡]	1.51	1.50	1.41	1.40	1.34
3	Neonatal deaths N (%)	247 (18.0)	257 (19.2)	230 (18.2)	235 (19.6)	230 (19.9)
	Rates per 1,000 births [‡]	1.60	1.68	1.52	1.59	1.60
4	Stillbirths N (%)	310 (22.6)	303 (22.7)	310 (24.5)	259 (21.6)	269 (23.2)
	Rates per 1,000 births [‡]	2.00	1.96	2.05	1.78	1.91
5 - Most deprived	Neonatal deaths N (%)	353 (25.7)	351 (26.3)	312 (24.6)	320 (26.7)	295 (25.5)
	Rates per 1,000 births [‡]	2.28	2.27	2.07	2.20	2.07
Not known	Neonatal deaths N (%)	8 (0.6)	6 (0.4)	4 (0.3)	1 (0.1)	3 (0.3)
	Rates per 1,000 births [‡]	1.68	1.31	1.57	0.40	1.22

[§] excluding terminations of pregnancy and births <24⁺⁰ weeks gestational age

* based on mothers' postcodes at time of birth, using the Children in Low-Income Families Local Measure

[‡] per 1,000 live births

Data sources: MBRRACE-UK, PDS, ONS, NRS, PHS, NIMATS, States of Guernsey, States of Jersey

© 2021, re-used with the permission of NHS Digital. All rights reserved.

Table 20: Ratios of mortality rates for stillbirth by mothers' socio-economic deprivation quintile of residence by year: United Kingdom and Crown Dependencies, for births in 2015 to 2019

Socio-economic deprivation quintile*	Ratio of mortality rates (95% confidence intervals) [§]				
	Stillbirths				
	2015	2016	2017	2018	2019
1 - Least deprived	Reference	Reference	Reference	Reference	Reference
2	1.08 (0.96 to 1.23)	1.18 (1.08 to 1.28)	1.11 (1.01 to 1.22)	1.06 (0.96 to 1.17)	1.15 (1.04 to 1.28)
3	1.23 (1.09 to 1.39)	1.33 (1.23 to 1.45)	1.27 (1.17 to 1.39)	1.31 (1.19 to 1.43)	1.42 (1.30 to 1.56)
4	1.48 (1.31 to 1.66)	1.46 (1.35 to 1.58)	1.54 (1.43 to 1.67)	1.57 (1.44 to 1.7)	1.60 (1.47 to 1.75)
5 - Most deprived	1.68 (1.50 to 1.89)	1.66 (1.54 to 1.78)	1.72 (1.60 to 1.86)	1.79 (1.66 to 1.94)	2.00 (1.85 to 2.17)

[§] excluding terminations of pregnancy and births <24⁺⁰ weeks gestational age

* based on mothers' postcodes at time of birth, using the Children in Low-Income Families Local Measure

Data sources: MBRRACE-UK, PDS, ONS, NRS, PHS, NIMATS, States of Guernsey, States of Jersey

© 2021, re-used with the permission of NHS Digital. All rights reserved.

Table 21: Ratios of mortality rates for neonatal death by mothers' socio-economic deprivation quintile of residence by year: United Kingdom and Crown Dependencies, for births in 2015 to 2019

Socio-economic deprivation quintile*	Ratio of mortality rates (95% confidence intervals) [§]				
	Neonatal deaths				
	2015	2016	2017	2018	2019
1 - Least deprived	Reference	Reference	Reference	Reference	Reference
2	1.07 (0.89 to 1.28)	1.24 (1.08 to 1.42)	1.07 (0.93 to 1.23)	1.14 (0.99 to 1.31)	1.12 (0.96 to 1.29)
3	1.13 (0.94 to 1.36)	1.39 (1.22 to 1.58)	1.15 (1.01 to 1.32)	1.29 (1.13 to 1.48)	1.33 (1.16 to 1.53)
4	1.42 (1.19 to 1.68)	1.62 (1.44 to 1.82)	1.55 (1.38 to 1.74)	1.45 (1.27 to 1.64)	1.59 (1.40 to 1.80)
5 - Most deprived	1.61 (1.36 to 1.91)	1.88 (1.68 to 2.09)	1.57 (1.40 to 1.76)	1.79 (1.59 to 2.01)	1.73 (1.53 to 1.94)

[§] excluding terminations of pregnancy and births <24⁺⁰ weeks gestational age

* based on mothers' postcodes at time of birth, using the Children in Low-Income Families Local Measure

Data sources: MBRRACE-UK, PDS, ONS, NRS, PHS, NIMATS, States of Guernsey, States of Jersey

© 2021, re-used with the permission of NHS Digital. All rights reserved.

Table 22: Stillbirth rates by mother's age by year: United Kingdom and Crown Dependencies, for births in 2015 to 2019

Mother's age		2015	2016	2017	2018	2019
<20	Stillbirths N (%)	122 (4.0)	125 (4.1)	120 (4.2)	109 (4.2)	82 (3.4)
	Rates per 1,000 births [†]	4.65	5.05	5.31	5.25	4.20
20-24	Stillbirths N (%)	500 (16.5)	539 (17.6)	464 (16.3)	420 (16.3)	362 (15.1)
	Rates per 1,000 births [†]	4.22	4.77	4.34	4.24	3.82
25-29	Stillbirths N (%)	804 (26.5)	799 (26.1)	762 (26.8)	631 (24.5)	618 (25.8)
	Rates per 1,000 births [†]	3.73	3.74	3.68	3.22	3.26
30-34	Stillbirths N (%)	858 (28.3)	832 (27.1)	788 (27.7)	735 (28.5)	719 (30.0)
	Rates per 1,000 births [†]	3.62	3.47	3.34	3.19	3.15
35-39	Stillbirths N (%)	573 (18.9)	560 (18.3)	541 (19.0)	520 (20.2)	476 (19.8)
	Rates per 1,000 births [†]	4.36	4.12	3.98	3.88	3.61
≥40	Stillbirths N (%)	175 (5.8)	210 (6.9)	165 (5.8)	163 (6.3)	141 (5.9)
	Rates per 1,000 births [†]	5.62	6.61	5.27	5.30	4.45
Not known	Stillbirths N (%)	2 (0.1)	0 (0.0)	0 (0.0)	1 (0.0)	1 (0.0)
	Rates per 1,000 births [†]	0.08	0.00	0.00	0.04	0.05

[§] excluding terminations of pregnancy and births <24⁺⁰ weeks gestational age

[†] per 1,000 total births

Data sources: MBRRACE-UK, PDS, ONS, NRS, PHS, NIMATS, States of Guernsey, States of Jersey

© 2021, re-used with the permission of NHS Digital. All rights reserved.

Table 23: Neonatal mortality rates by mother's age by year: United Kingdom and Crown Dependencies, for births in 2015 to 2019

Mother's age		2015	2016	2017	2018	2019
<20	Neonatal deaths N (%)	77 (5.6)	80 (6.0)	67 (5.3)	51 (4.3)	51 (4.4)
	Rates per 1,000 births [‡]	2.95	3.25	2.98	2.47	2.62
20-24	Neonatal deaths N (%)	239 (17.4)	226 (16.9)	200 (15.8)	204 (17.0)	177 (15.3)
	Rates per 1,000 births [‡]	2.03	2.01	1.88	2.07	1.88
25-29	Neonatal deaths N (%)	360 (26.2)	340 (25.4)	329 (26.0)	315 (26.3)	317 (27.4)
	Rates per 1,000 births [‡]	1.68	1.60	1.59	1.61	1.68
30-34	Stillbirths N (%)	377 (27.5)	380 (28.4)	365 (28.8)	336 (28.0)	342 (29.5)
	Rates per 1,000 births [‡]	1.60	1.59	1.55	1.46	1.50
35-39	Neonatal deaths N (%)	242 (17.6)	226 (16.9)	231 (18.2)	222 (18.5)	206 (17.8)
	Rates per 1,000 births [‡]	1.85	1.67	1.71	1.66	1.57
≥40	Neonatal deaths N (%)	78 (5.7)	85 (6.4)	75 (5.9)	71 (5.9)	65 (5.6)
	Rates per 1,000 births [‡]	2.52	2.69	2.41	2.32	2.06
Not known	Neonatal deaths N (%)	0 (0.0)	0 (0.0)	0 (0.0)	0 (0.0)	0 (0.0)
	Rates per 1,000 births [‡]	0.00	0.00	0.00	0.00	0.00

[§] excluding terminations of pregnancy and births <24⁺⁰ weeks gestational age

[‡] per 1,000 live births

Data sources: MBRRACE-UK, PDS, ONS, NRS, PHS, NIMATS, States of Guernsey, States of Jersey

© 2021, re-used with the permission of NHS Digital. All rights reserved.

Table 24: Ratios of mortality rates for stillbirth by mother's age by year: United Kingdom and Crown Dependencies, for births in 2015 to 2019

Mother's age	Ratio of mortality rates (95% confidence intervals) [§]				
	Stillbirths				
	2015	2016	2017	2018	2019
<20	1.28 (1.06 to 1.55)	1.46 (1.22 to 1.74)	1.59 (1.33 to 1.90)	1.65 (1.36 to 1.99)	1.33 (1.07 to 1.66)
20-24	1.17 (1.04 to 1.30)	1.37 (1.26 to 1.5)	1.30 (1.19 to 1.42)	1.33 (1.21 to 1.46)	1.21 (1.09 to 1.35)
25-29	1.03 (0.94 to 1.13)	1.08 (1.00 to 1.16)	1.10 (1.03 to 1.18)	1.01 (0.93 to 1.09)	1.03 (0.96 to 1.12)
30-34	Reference	Reference	Reference	Reference	Reference
35-39	1.20 (1.08 to 1.34)	1.19 (1.09 to 1.29)	1.19 (1.09 to 1.30)	1.22 (1.11 to 1.33)	1.15 (1.05 to 1.26)
≥40	1.55 (1.32 to 1.82)	1.90 (1.66 to 2.18)	1.58 (1.35 to 1.84)	1.66 (1.42 to 1.94)	1.41 (1.20 to 1.67)

[§] excluding terminations of pregnancy and births <24⁺ weeks gestational age

Data sources: MBRRACE-UK, PDS, ONS, NRS, PHS, NIMATS, States of Guernsey, States of Jersey

© 2021, re-used with the permission of NHS Digital. All rights reserved.

Table 25: Ratios of mortality rates for neonatal death by mother's age by year: United Kingdom and Crown Dependencies, for births in 2015 to 2019

Mother's age	Ratio of mortality rates (95% confidence intervals) [§]				
	Neonatal deaths				
	2015	2016	2017	2018	2019
<20	1.85 (1.44 to 2.36)	2.04 (1.64 to 2.55)	1.92 (1.51 to 2.45)	1.69 (1.28 to 2.23)	1.75 (1.32 to 2.30)
20-24	1.27 (1.08 to 1.49)	1.26 (1.11 to 1.44)	1.21 (1.05 to 1.40)	1.42 (1.23 to 1.63)	1.25 (1.08 to 1.46)
25-29	1.05 (0.91 to 1.21)	1.08 (1.00 to 1.16)	1.10 (1.03 to 1.18)	1.01 (0.93 to 1.09)	1.03 (0.96 to 1.12)
30-34	Reference	Reference	Reference	Reference	Reference
35-39	1.16 (0.99 to 1.36)	1.05 (0.92 to 1.2)	1.10 (0.97 to 1.26)	1.14 (0.99 to 1.30)	1.05 (0.91 to 1.20)
≥40	1.58 (1.24 to 2.01)	1.69 (1.36 to 2.1)	1.55 (1.24 to 1.95)	1.59 (1.26 to 2.01)	1.37 (1.07 to 1.76)

[§] excluding terminations of pregnancy and births <24⁺ weeks gestational age

Data sources: MBRRACE-UK, PDS, ONS, NRS, PHS, NIMATS, States of Guernsey, States of Jersey

© 2021, re-used with the permission of NHS Digital. All rights reserved.

4.2 Mortality rates and ratios of rates: babies' characteristics

Table 26: Stillbirth rates by babies' ethnicity by year: United Kingdom and Crown Dependencies, for births in 2015 to 2019

Baby's ethnicity		2015	2016	2017	2018	2019
White	Stillbirths N (%)	1,987 (65.5)	2,067 (67.4)	1,911 (67.3)	1,738 (67.4)	1,606 (66.9)
	Rates per 1,000 births [†]	3.55	3.74	3.59	3.39	3.22
Mixed	Stillbirths N (%)	162 (5.3)	164 (5.4)	184 (6.5)	170 (6.6)	146 (6.1)
	Rates per 1,000 births [†]	4.11	4.01	4.56	4.25	3.58
Asian, Asian British	Stillbirths N (%)	433 (14.3)	457 (14.9)	415 (14.6)	370 (14.3)	359 (15.0)
	Rates per 1,000 births [†]	5.88	6.09	5.70	5.31	5.05
Black, Black British	Stillbirths N (%)	269 (8.9)	275 (9.0)	239 (8.4)	226 (8.8)	220 (9.2)
	Rates per 1,000 births [†]	8.17	8.29	7.46	7.35	7.23
Other	Stillbirths N (%)	71 (2.3)	87 (2.8)	73 (2.6)	64 (2.5)	56 (2.3)
	Rates per 1,000 births [†]	3.56	4.14	3.68	3.29	2.95
Refused/Not Known	Stillbirths N (%)	112 (3.7)	15 (0.5)	18 (0.6)	11 (0.4)	12 (0.5)
	Rates per 1,000 births [†]					

[§] excluding terminations of pregnancy and births <24⁺⁰ weeks gestational age

[†] per 1,000 total births

Data sources: MBRRACE-UK, PDS, ONS, NRS, PHS, NIMATS, States of Guernsey, States of Jersey

© 2021, re-used with the permission of NHS Digital. All rights reserved.

Table 27: Neonatal mortality rates by babies' ethnicity by year: United Kingdom and Crown Dependencies, for births in 2015 to 2019

Socio-economic deprivation quintile*		2015	2016	2017	2018	2019
White	Neonatal deaths N (%)	953 (69.4)	937 (70.1)	878 (69.3)	843 (70.3)	802 (69.3)
	Rates per 1,000 births [‡]	1.71	1.70	1.66	1.65	1.62
Mixed	Neonatal deaths N (%)	65 (4.7)	71 (5.3)	54 (4.3)	62 (5.2)	51 (4.4)
	Rates per 1,000 births [‡]	1.66	1.74	1.34	1.56	1.25
Asian, Asian British	Neonatal deaths N (%)	183 (13.3)	211 (15.8)	207 (16.3)	182 (15.2)	182 (15.7)
	Rates per 1,000 births [‡]	2.50	2.83	2.86	2.63	2.57
Black, Black British	Stillbirths N (%)	80 (5.8)	84 (6.3)	88 (6.9)	73 (6.1)	70 (6.0)
	Rates per 1,000 births [‡]	2.45	2.55	2.77	2.39	2.32
Other	Neonatal deaths N (%)	32 (2.3)	29 (2.2)	32 (2.5)	26 (2.2)	37 (3.2)
	Rates per 1,000 births [‡]	1.61	1.38	1.62	1.34	1.95
Refused/Not Known	Neonatal deaths N (%)	60 (4.4)	5 (0.4)	8 (0.6)	13 (1.1)	16 (1.4)
	Rates per 1,000 births [‡]					

[§] excluding terminations of pregnancy and births <24⁺⁰ weeks gestational age

[‡] per 1,000 live births

Data sources: MBRRACE-UK, PDS, ONS, NRS, PHS, NIMATS, States of Guernsey, States of Jersey

© 2021, re-used with the permission of NHS Digital. All rights reserved.

Table 28: Ratios of mortality rates for stillbirth by babies' ethnicity by year: United Kingdom and Crown Dependencies, for births in 2015 to 2019

Socio-economic deprivation quintile*	Ratio of mortality rates (95% confidence intervals) [§]				
	Stillbirths				
	2015	2016	2017	2018	2019
White	Reference	Reference	Reference	Reference	Reference
Mixed	1.16 (0.99 to 1.36)	1.07 (0.92 to 1.25)	1.27 (1.10 to 1.47)	1.25 (1.08 to 1.46)	1.11 (0.94 to 1.31)
Asian, Asian British	1.66 (1.49 to 1.84)	1.63 (1.48 to 1.78)	1.59 (1.44 to 1.75)	1.57 (1.41 to 1.73)	1.57 (1.41 to 1.74)
Black, Black British	2.30 (2.03 to 2.61)	2.21 (1.97 to 2.49)	2.08 (1.83 to 2.36)	2.17 (1.90 to 2.47)	2.24 (1.96 to 2.56)
Other	1.00 (0.79 to 1.27)	1.10 (0.89 to 1.36)	1.02 (0.81 to 1.29)	0.97 (0.76 to 1.24)	0.91 (0.70 to 1.19)

[§] excluding terminations of pregnancy and births <24⁺ weeks gestational age

Data sources: MBRRACE-UK, PDS, ONS, NRS, PHS, NIMATS, States of Guernsey, States of Jersey

© 2021, re-used with the permission of NHS Digital. All rights reserved.

Table 29: Ratios of mortality rates for neonatal death by babies' ethnicity by year: United Kingdom and Crown Dependencies, for births in 2015 to 2019

Socio-economic deprivation quintile*	Ratio of mortality rates (95% confidence intervals) [§]				
	Neonatal deaths				
	2015	2016	2017	2018	2019
White	Reference	Reference	Reference	Reference	Reference
Mixed	0.97 (0.75 to 1.25)	1.02 (0.81 to 1.29)	0.81 (0.62 to 1.06)	0.94 (0.73 to 1.21)	0.78 (0.59 to 1.02)
Asian, Asian British	1.46 (1.25 to 1.71)	1.66 (1.45 to 1.90)	1.73 (1.50 to 1.98)	1.59 (1.37 to 1.84)	1.59 (1.38 to 1.84)
Black, Black British	1.43 (1.14 to 1.80)	1.50 (1.21 to 1.86)	1.67 (1.35 to 2.06)	1.45 (1.15 to 1.82)	1.43 (1.13 to 1.81)
Other	0.94 (0.66 to 1.34)	0.81 (0.56 to 1.17)	0.98 (0.69 to 1.38)	0.81 (0.55 to 1.19)	1.21 (0.88 to 1.67)

[§] excluding terminations of pregnancy and births <24⁺ weeks gestational age

Data sources: MBRRACE-UK, PDS, ONS, NRS, PHS, NIMATS, States of Guernsey, States of Jersey

© 2021, re-used with the permission of NHS Digital. All rights reserved.

Table 30: Number and percentage of stillbirths and late fetal losses by gestational age at birth: United Kingdom and Crown Dependencies, for births from 2015 to 2019

Gestational age at birth (weeks)		2015	2016	2017	2018	2019
22 ⁺⁰ -23 ⁺⁶	Births [§]	1,001	1,040	1,078	1,022	1,039
	Late fetal losses N (%)	524 (14.7)	529 (14.7)	530 (15.7)	508 (16.5)	514 (17.7)
	Rates per 1,000 births [†]	523.5	508.7	491.7	497.1	494.7
24 ⁺⁰ -27 ⁺⁶	Births [§]	3,221	3,269	3,227	3,064	2,943
	Stillbirths N (%)	733 (20.6)	717 (19.9)	710 (21.1)	665 (21.6)	604 (20.7)
	Rates per 1,000 births [†]	227.6	219.3	220.0	217.0	205.2
28 ⁺⁰ -31 ⁺⁶	Births [§]	6,558	6,620	6,540	6,083	5,958
	Stillbirths N (%)	495 (13.9)	512 (14.2)	482 (14.3)	467 (15.1)	417 (14.3)
	Rates per 1,000 births [†]	75.5	77.3	73.7	76.8	70.0
32 ⁺⁰ -36 ⁺⁶	Births [§]	49,652	50,371	50,296	48,189	46,518
	Stillbirths N (%)	762 (21.4)	786 (21.9)	730 (21.7)	658 (21.3)	635 (21.8)
	Rates per 1,000 births [†]	15.3	15.6	14.5	13.7	13.7
37 ⁺⁰ -41 ⁺⁶	Births [§]	704,733	678,093	660,980	637,280	625,274
	Stillbirths N (%)	1025 (28.8)	1031 (28.7)	894 (26.5)	772 (25.0)	733 (25.2)
	Rates per 1,000 births [†]	1.45	1.52	1.35	1.21	1.17
≥42	Births [§]	18,980	18,277	16,212	14,307	13,214
	Stillbirths N (%)	15 (0.4)	19 (0.5)	22 (0.7)	15 (0.5)	8 (0.3)
	Rates per 1,000 births [†]	0.79	1.04	1.36	1.05	0.61
Total births		784,145	757,670	738,333	709,945	694,946

[§] excluding terminations of pregnancy and births with missing gestational age

[†] per 1,000 total births

[‡] per 1,000 live births

Data sources: MBRRACE-UK, PDS, ONS, NRS, PHS, NIMATS, States of Guernsey, States of Jersey
 © 2021, re-used with the permission of NHS Digital. All rights reserved.

Table 31: Number and percentage of neonatal deaths by gestational age at birth: United Kingdom and Crown Dependencies, for births from 2015 to 2019

Gestational age at birth (weeks)		2015	2016	2017	2018	2019
22 ⁺⁰ -23 ⁺⁶	Live births [§]	477	511	548	514	525
	Neonatal deaths N (%)	342 (20.1)	360 (21.3)	386 (23.4)	356 (22.9)	337 (22.6)
	Rates per 1,000 births [‡]	717.0	704.5	704.4	692.6	641.9
24 ⁺⁰ -27 ⁺⁶	Live births [§]	2,488	2,552	2,517	2,399	2,339
	Neonatal deaths N (%)	383 (22.5)	404 (23.9)	365 (22.2)	342 (22.0)	349 (23.4)
	Rates per 1,000 births [‡]	153.9	158.3	145.0	142.6	149.2
28 ⁺⁰ -31 ⁺⁶	Live births [§]	6,063	6,108	6,058	5,616	5,541
	Neonatal deaths N (%)	205 (12)	177 (10.5)	187 (11.4)	167 (10.8)	160 (10.7)
	Rates per 1,000 births [‡]	33.8	29.0	30.9	29.7	28.9
32 ⁺⁰ -36 ⁺⁶	Live births [§]	48,890	49,585	49,566	47,531	45,883
	Neonatal deaths N (%)	271 (15.9)	275 (16.2)	270 (16.4)	244 (15.7)	241 (16.2)
	Rates per 1,000 births [‡]	5.54	5.55	5.45	5.13	5.25
37 ⁺⁰ -41 ⁺⁶	Live births [§]	703,708	677,062	660,086	636,508	624,541
	Neonatal deaths N (%)	495 (29.1)	468 (27.6)	428 (26)	431 (27.8)	398 (26.7)
	Rates per 1,000 births [‡]	0.70	0.69	0.65	0.68	0.64
≥42	Births [§]	18,965	18,258	16,190	14,292	13,206
	Neonatal deaths N (%)	7 (0.4)	9 (0.5)	11 (0.7)	13 (0.8)	6 (0.4)
	Rates per 1,000 births [‡]	0.37	0.49	0.68	0.91	0.45
Total live births		780,591	754,076	734,965	706,860	692,035

[§] excluding terminations of pregnancy and births with missing gestational age

[†] per 1,000 total births

[‡] per 1,000 live births

Data sources: MBRRACE-UK, PDS, ONS, NRS, PHS, NIMATS, States of Guernsey, States of Jersey
 © 2021, re-used with the permission of NHS Digital. All rights reserved.

Table 32: Number and percentage of extended perinatal deaths by gestational age at birth: United Kingdom and Crown Dependencies, for births from 2015 to 2019

Gestational age at birth (weeks)		2015	2016	2017	2018	2019
22 ⁺⁰ -23 ⁺⁶	Births [§]	1,001	1,040	1,078	1,022	1,039
	Extended perinatal deaths N (%)	866 (16.5)	889 (16.8)	916 (18.3)	864 (18.6)	851 (19.3)
	Rates per 1,000 births [†]	865.1	854.8	849.7	845.4	819.1
24 ⁺⁰ -27 ⁺⁶	Births [§]	3,221	3,269	3,227	3,064	2,943
	Extended perinatal deaths N (%)	1116 (21.2)	1121 (21.2)	1075 (21.4)	1007 (21.7)	953 (21.6)
	Rates per 1,000 births [†]	346.5	342.9	333.1	328.7	323.8
28 ⁺⁰ -31 ⁺⁶	Births [§]	6,558	6,620	6,540	6,083	5,958
	Extended perinatal deaths N (%)	700 (13.3)	689 (13)	669 (13.3)	634 (13.7)	577 (13.1)
	Rates per 1,000 births [†]	106.7	104.1	102.3	104.2	96.8
32 ⁺⁰ -36 ⁺⁶	Births [§]	49,652	50,371	50,296	48,189	46,518
	Extended perinatal deaths N (%)	1033 (19.6)	1061 (20.1)	1000 (19.9)	902 (19.4)	876 (19.9)
	Rates per 1,000 births [†]	20.8	21.1	19.9	18.7	18.8
37 ⁺⁰ -41 ⁺⁶	Births [§]	704,733	678,093	660,980	637,280	625,274
	Extended perinatal deaths N (%)	1520 (28.9)	1499 (28.4)	1322 (26.4)	1203 (25.9)	1131 (25.7)
	Rates per 1,000 births [†]	2.16	2.21	2.00	1.89	1.81
≥42	Births [§]	18,980	18,277	16,212	14,307	13,214
	Extended perinatal deaths N (%)	22 (0.4)	28 (0.5)	33 (0.7)	28 (0.6)	14 (0.3)
	Rates per 1,000 births [†]	1.16	1.53	2.04	1.96	1.06
Total births		784,145	757,670	738,333	709,945	694,946

[§] excluding terminations of pregnancy and births with missing gestational age

[†] per 1,000 total births

[‡] per 1,000 live births

Data sources: MBRRACE-UK, PDS, ONS, NRS, PHS, NIMATS, States of Guernsey, States of Jersey
 © 2021, re-used with the permission of NHS Digital. All rights reserved.

Table 33: Stillbirth rates by babies' sex, multiplicity of birth and birthweight by year: United Kingdom and Crown Dependencies, for births in 2017 to 2019

Baby's characteristic	Number (%) [§]						Rate per 1,000 births [§]		
	Stillbirths						Stillbirths [†]		
	2017		2018		2019		2017	2018	2019
Sex									
Male	1,481	(52.2)	1,288	(49.9)	1,187	(49.5)	3.81	3.42	3.23
Female	1,325	(46.7)	1,253	(48.6)	1,186	(49.4)	3.57	3.49	3.40
Not known	30	(1.1)	38	(1.5)	26	(1.1)			
Multiplicity									
1	2,667	(93.9)	2,434	(94.4)	2,246	(93.6)	3.63	3.42	3.24
2	164	(5.8)	136	(5.3)	144	(6.0)	6.99	6.07	6.68
≥3	9	(0.3)	9	(0.3)	8	(0.3)	17.11	20.36	15.07
Not known	0	(0.0)	0	(0.0)	1	(0.0)			
Birthweight (g)									
<1,500	1,225	(43.1)	1,155	(44.8)	1,067	(44.5)	147.40	149.79	143.88
1,500-2,499	648	(22.8)	622	(24.1)	528	(22.0)	14.05	13.95	12.26
2,500-3,499	743	(26.2)	615	(23.8)	575	(24.0)	1.91	1.62	1.55
3,500-4,499	199	(7.0)	162	(6.3)	205	(8.5)	0.68	0.58	0.76
≥4,500	10	(0.4)	11	(0.4)	13	(0.5)	0.90	1.14	1.43
Not known	15	(0.5)	14	(0.5)					

§ excluding terminations of pregnancy and births <24⁺⁰ weeks gestational age

† per 1,000 total births

Data sources: MBRRACE-UK, PDS, ONS, NRS, PHS, NIMATS, States of Guernsey, States of Jersey

© 2021, re-used with the permission of NHS Digital. All rights reserved.

Table 34: Neonatal mortality rates by babies' sex, multiplicity of birth and birthweight by year: United Kingdom and Crown Dependencies, for births in 2017 to 2019

Baby's characteristic	Number (%) [§]						Rate per 1,000 births [§]		
	Neonatal deaths						Neonatal deaths [‡]		
	2017		2018		2019		2017	2018	2019
Sex									
Male	723	(57.1)	641	(53.5)	646	(55.8)	1.87	1.71	1.76
Female	532	(42.0)	553	(46.1)	505	(43.6)	1.44	1.55	1.45
Not known	12	(0.9)	5	(0.4)	7	(0.6)			
Multiplicity									
1	1,130	(89.2)	1,053	(87.8)	1,026	(88.6)	1.54	1.48	1.48
2	127	(10.0)	142	(11.8)	128	(11.1)	5.45	6.38	5.98
≥3	9	(0.7)	3	(0.3)	4	(0.3)	17.41	6.93	7.65
Not known	1	(0.1)	1	(0.1)		(0.0)			
Birthweight (g)									
<1,500	524	(41.4)	507	(42.3)	502	(43.4)	73.95	77.33	79.07
1,500-2,499	295	(23.3)	273	(22.8)	243	(21.0)	6.49	6.21	5.71
2,500-3,499	311	(24.5)	313	(26.1)	310	(26.8)	0.80	0.83	0.84
3,500-4,499	124	(9.8)	95	(7.9)	93	(8.0)	0.42	0.34	0.34
≥4,500	7	(0.6)	8	(0.7)	8	(0.7)	0.63	0.83	0.88
Not known	6	(0.5)	3	(0.3)	2	(0.2)			

[§] excluding terminations of pregnancy and births <24⁺⁰ weeks gestational age

[‡] per 1,000 live births

Data sources: MBRRACE-UK, PDS, ONS, NRS, PHS, NIMATS, States of Guernsey, States of Jersey
 © 2021, re-used with the permission of NHS Digital. All rights reserved.

Table 35: Ratios of mortality rates for stillbirth by babies' sex, multiplicity of birth and birthweight by year: United Kingdom and Crown Dependencies, for births in 2017 to 2019

Baby's characteristic	Ratio of mortality rates (RR) [§]		
	Stillbirths		
	2017	2018	2019
Sex			
Male	1.07 (1.01 to 1.12)	0.98 (0.92 to 1.03)	0.95 (0.9 to 1.01)
Female	Reference	Reference	Reference
Multiplicity			
1	Reference	Reference	Reference
2	1.93 (1.65 to 2.25)	1.78 (1.5 to 2.1)	2.06 (1.75 to 2.43)
≥3	4.72 (2.47 to 9.02)	5.95 (3.12 to 11.37)	4.65 (2.34 to 9.26)
Birthweight (g)			
<1,500	216.59 (204.65 to 229.24)	259 (244.08 to 274.84)	190.53 (179.36 to 202.39)
1,500-2,499	20.64 (19.03 to 22.4)	24.13 (22.18 to 26.25)	16.23 (14.84 to 17.75)
2,500-3,499	2.8 (2.6 to 3.03)	2.8 (2.57 to 3.05)	2.05 (1.88 to 2.24)
3,500-4,499	Reference	Reference	Reference
≥4,500	1.32 (0.7 to 2.46)	1.97 (1.08 to 3.57)	1.9 (1.1 to 3.28)

[§] excluding terminations of pregnancy and births <24⁺ weeks gestational age
 Data sources: MBRRACE-UK, PDS, ONS, NRS, PHS, NIMATS, States of Guernsey, States of Jersey
 © 2021, re-used with the permission of NHS Digital. All rights reserved.

Table 36: Ratios of mortality rates for neonatal death by babies' sex, multiplicity of birth and birthweight by year: United Kingdom and Crown Dependencies, for births in 2017 to 2019

Baby's characteristic	Ratio of mortality rates (RR) [§]		
	Neonatal deaths		
	2017	2018	2019
Sex			
Male	1.30 (1.20 to 1.40)	1.10 (1.02 to 1.19)	1.21 (1.12 to 1.31)
Female	Reference	Reference	Reference
Multiplicity			
1	Reference	Reference	Reference
2	3.53 (2.97 to 4.21)	4.30 (3.64 to 5.07)	4.03 (3.39 to 4.79)
≥3	11.28 (5.90 to 21.58)	4.67 (1.51 to 14.43)	5.15 (1.94 to 13.69)
Birthweight (g)			
<1,500	174.27 (159.20 to 190.77)	227.90 (207.42 to 250.39)	230.63 (209.79 to 253.53)
1,500-2,499	15.29 (13.53 to 17.27)	18.30 (16.09 to 20.82)	16.66 (14.54 to 19.08)
2,500-3,499	1.89 (1.67 to 2.13)	2.43 (2.16 to 2.75)	2.44 (2.16 to 2.76)
3,500-4,499	Reference	Reference	Reference
≥4,500	1.48 (0.70 to 3.13)	2.44 (1.21 to 4.93)	2.58 (1.27 to 5.21)

[§] excluding terminations of pregnancy and births <24⁺ weeks gestational age
 Data sources: MBRRACE-UK, PDS, ONS, NRS, PHS, NIMATS, States of Guernsey, States of Jersey
 © 2021, re-used with the permission of NHS Digital. All rights reserved.

4.3 Mothers' demographic, behavioural and pregnancy characteristics of deaths

Table 37: Stillbirths by mothers' demographic characteristics by year: United Kingdom and Crown Dependencies, for births in 2017 to 2019

Mothers' demographic characteristics	Number (%) [§]					
	Stillbirths					
	2017		2018		2019	
Body Mass Index						
<16.0	2	(0.1)	2	(0.1)	5	(0.2)
16.0 to 18.4	67	(2.4)	66	(2.6)	53	(2.2)
18.5 to 24.9	1,092	(38.5)	940	(36.4)	888	(37.0)
25.0 to 29.9	773	(27.2)	697	(27.0)	675	(28.1)
30.0 to 34.9	400	(14.1)	407	(15.8)	351	(14.6)
≥35.0	319	(11.2)	292	(11.3)	265	(11.0)
Not known	187	(6.6)	175	(6.8)	162	(6.8)
Previous obstetric history^v						
Never pregnant	1,023	(36.0)	918	(35.6)	849	(35.4)
Stillbirth or neonatal death	110	(3.9)	109	(4.2)	93	(3.9)
Pre 24 week loss	680	(23.9)	637	(24.7)	611	(25.5)
Surviving child	1,489	(52.4)	1,358	(52.7)	1,233	(51.4)
Not known	0	(0.0)	1	(0.0)	1	(0.0)
Consanguinity						
Unrelated	2,516	(88.6)	2,252	(87.3)	2,112	(88.0)
First cousins or closer	79	(2.8)	62	(2.4)	47	(2.0)
Other relation	32	(1.1)	40	(1.6)	31	(1.3)
Not known	213	(7.5)	225	(8.7)	209	(8.7)
Born in the UK						
Yes	1,830	(64.4)	1,705	(66.1)	1,574	(65.6)
No	808	(28.5)	682	(26.4)	608	(25.3)
Not known	202	(7.1)	192	(7.4)	217	(9.0)
Time resident in the UK^w						
Less than 1 year	79	(2.8)	75	(2.9)	56	(2.3)
More than 1 year	654	(23.0)	541	(21.0)	487	(20.3)
Not known	75	(2.6)	66	(2.6)	65	(2.7)
Support during pregnancy						
Partner, cohabiting	2,354	(82.9)	2,121	(82.2)	1,970	(82.1)
Partner, not cohabiting	214	(7.5)	194	(7.5)	191	(8.0)
Family/friend	194	(6.8)	193	(7.5)	176	(7.3)
None	25	(0.9)	24	(0.9)	16	(0.7)
Not known	53	(1.9)	47	(1.8)	46	(1.9)
Employment status						
Employed or self-employed	1,660	(58.5)	1,547	(60.0)	1,446	(60.3)
Unemployed (looking for work)	352	(12.4)	281	(10.9)	274	(11.4)
Retired	1	(0.0)	73	(2.8)	58	(2.4)

Mothers' demographic characteristics	Number (%) [§]					
	Stillbirths					
	2017		2018		2019	
Student	75	(2.6)	462	(17.9)	394	(16.4)
Looking after home/family	524	(18.5)	16	(0.6)	23	(1.0)
Permanently sick/disabled	12	(0.4)	26	(1.0)	23	(1.0)
Other	22	(0.8)	174	(6.7)	181	(7.5)
Not known	194	(6.8)	0	(0.0)	0	(0.0)

[§] excluding terminations of pregnancy and births <24⁺⁰ weeks gestational age

^v multiparous mothers can be included in more than one category

[~] women not born in the UK

Data source: MBRRACE-UK

Table 38: Neonatal deaths by mothers' demographic characteristics by year: United Kingdom and Crown Dependencies, for births in 2017 to 2019

Mothers' demographic characteristics	Number (%) [§]					
	Neonatal deaths					
	2017		2018		2019	
Body Mass Index						
<16.0	3	(0.2)	3	(0.3)	32	(2.8)
16.0 to 18.4	42	(3.3)	33	(2.8)	401	(34.6)
18.5 to 24.9	457	(36.1)	428	(35.7)	268	(23.1)
25.0 to 29.9	276	(21.8)	275	(22.9)	171	(14.8)
30.0 to 34.9	159	(12.5)	156	(13.0)	120	(10.4)
≥35.0	133	(10.5)	138	(11.5)	166	(14.3)
Not known	197	(15.5)	166	(13.8)		(0.0)
Previous obstetric history^v						
Never pregnant	445	(35.1)	411	(34.3)	401	(34.6)
Stillbirth or neonatal death	76	(6.0)	60	(5.0)	65	(5.6)
Pre 24 week loss	293	(23.1)	319	(26.6)	294	(25.4)
Surviving child	674	(53.2)	618	(51.5)	613	(52.9)
Not known	0	(0.0)	1	(0.1)	0	(0.0)
Consanguinity						
Unrelated	1,067	(84.2)	1,025	(85.5)	957	(82.6)
First cousins or closer	45	(3.6)	45	(3.8)	50	(4.3)
Other relation	19	(1.5)	12	(1.0)	19	(1.6)
Not known	136	(10.7)	117	(9.8)	132	(11.4)
Born in the UK						
Yes	831	(65.6)	815	(68.0)	785	(67.8)
No	262	(20.7)	258	(21.5)	221	(19.1)
Not known	174	(13.7)	126	(10.5)	152	(13.1)
Time resident in the UK[~]						
Less than 1 year	17	(1.3)	25	(2.1)	16	(1.4)
More than 1 year	213	(16.8)	202	(16.8)	168	(14.5)
Not known	32	(2.5)	31	(2.6)	37	(3.2)

Support during pregnancy

Mothers' demographic characteristics	Number (%) [§]					
	Neonatal deaths					
	2017		2018		2019	
Partner, cohabiting	1,044	(82.4)	989	(82.5)	945	(81.6)
Partner, not cohabiting	112	(8.8)	93	(7.8)	90	(7.8)
Family/friend	68	(5.4)	73	(6.1)	66	(5.7)
None	13	(1.0)	9	(0.8)	9	(0.8)
Not known	30	(2.4)	35	(2.9)	48	(4.1)
Employment status						
Employed or self-employed	674	(53.2)	682	(56.9)	637	(55.0)
Unemployed (looking for work)	125	(9.9)	120	(10.0)	105	(9.1)
Retired	0	(0.0)	0	(0.0)	0	(0.0)
Student	45	(3.6)	22	(1.8)	22	(1.9)
Looking after home/family	254	(20.0)	217	(18.1)	193	(16.7)
Permanently sick/disabled	6	(0.5)	5	(0.4)	2	(0.2)
Other	8	(0.6)	12	(1.0)	8	(0.7)
Not known	155	(12.2)	141	(11.8)	191	(16.5)

[§] excluding terminations of pregnancy and births <24⁺ weeks gestational age

^v multiparous mothers can be included in more than one category

[~] women not born in the UK

Data source: MBRRACE-UK

Table 39: Stillbirths by mothers' behavioural characteristics by year: United Kingdom and Crown Dependencies, for births in 2017 to 2019

Mother's behavioural characteristics	Number (%) [§]					
	Stillbirths					
	2017		2018		2019	
Smoking status						
Never smoked	1,766	(62.2)	1,560	(60.5)	1,444	(60.2)
Non-smoker at booking (history unknown)	100	(3.5)	107	(4.1)	114	(4.8)
Gave up before pregnancy	257	(9.0)	252	(9.8)	192	(8.0)
Gave up during pregnancy	127	(4.5)	109	(4.2)	107	(4.5)
Smoker	525	(18.5)	499	(19.3)	484	(20.2)
Not known	65	(2.3)	52	(2.0)	58	(2.4)
Breath carbon monoxide (ppm)						
<4	1,017	(35.8)	1,146	(44.4)	1,186	(49.4)
≥4	356	(12.5)	383	(14.9)	414	(17.3)
Not known	1,467	(51.7)	1,050	(40.7)	799	(33.3)
Alcohol abuse						
No	2,761	(97.2)	2,486	(96.4)	2,311	(96.3)
Yes	19	(0.7)	27	(1.0)	28	(1.2)
Not known	60	(2.1)	66	(2.6)	60	(2.5)
Substance abuse						
No	2,703	(95.2)	2,442	(94.7)	2,248	(93.7)
Yes	85	(3.0)	76	(2.9)	90	(3.8)
Not known	52	(1.8)	61	(2.4)	61	(2.5)

[§] excluding terminations of pregnancy and births <24⁺⁰ weeks gestational age
Data source: MBRRACE-UK

Table 40: Neonatal deaths by mothers' behavioural characteristics by year: United Kingdom and Crown Dependencies, for births in 2017 to 2019

Mother's behavioural characteristics	Number (%) [§]					
	Neonatal deaths					
	2017		2018		2019	
Smoking status						
Never smoked	741	(58.5)	707	(59.0)	674	(58.2)
Non-smoker at booking (history unknown)	90	(7.1)	87	(7.3)	69	(6.0)
Gave up before pregnancy	107	(8.4)	91	(7.6)	95	(8.2)
Gave up during pregnancy	44	(3.5)	44	(3.7)	40	(3.5)
Smoker	236	(18.6)	220	(18.3)	213	(18.4)
Not known	49	(3.9)	50	(4.2)	67	(5.8)
Breath carbon monoxide (ppm)						
<4	423	(33.4)	452	(37.7)	532	(45.9)
≥4	141	(11.1)	154	(12.8)	164	(14.2)
Not known	703	(55.5)	593	(49.5)	462	(39.9)
Alcohol abuse						
No	1,214	(95.8)	1,145	(95.5)	1,105	(95.4)
Yes	11	(0.9)	12	(1.0)	14	(1.2)
Not known	42	(3.3)	42	(3.5)	39	(3.4)
Substance abuse						
No	1,198	(94.6)	1,107	(92.3)	1,089	(94.0)
Yes	28	(2.2)	44	(3.7)	27	(2.3)
Not known	41	(3.2)	48	(4.0)	42	(3.6)

[§] excluding terminations of pregnancy and births <24⁺⁰ weeks gestational age
Data source: MBRRACE-UK

Table 41: Stillbirths by mothers' pregnancy characteristics by year: United Kingdom and Crown Dependencies, for births in 2017 to 2019

Mother's pregnancy characteristics	Number (%) [§]					
	Stillbirths					
	2017		2018		2019	
Booking (weeks gestational age)						
Less than 12 ⁺⁰	1,951	(68.7)	1,854	(71.9)	1,686	(70.3)
12 ⁺⁰ to 17 ⁺⁶	531	(18.7)	410	(15.9)	411	(17.1)
18 ⁺⁰	200	(7.0)	187	(7.3)	177	(7.4)
Not known	158	(5.6)	128	(5.0)	125	(5.2)
Documented poor antenatal care attender						
No	2,575	(90.7)	2,304	(89.3)	2,153	(89.7)
Yes	134	(4.7)	152	(5.9)	128	(5.3)
Not known	131	(4.6)	123	(4.8)	118	(4.9)
Assisted conception						
Not assisted	2,645	(93.1)	2,411	(93.5)	2,243	(93.5)
Ovulation induction only	19	(0.7)	20	(0.8)	8	(0.3)
In vitro fertilisation (IVF) [°]	114	(4.0)	90	(3.5)	85	(3.5)
Artificial insemination [□]	8	(0.3)	7	(0.3)	4	(0.2)
Not known	54	(1.9)	51	(2.0)	59	(2.5)

[§] excluding terminations of pregnancy and births <24⁺⁰ weeks gestational age

[°] including egg donation and intra-cytoplasmic sperm injection

[□] with or without ovulation induction

Data source: MBRRACE-UK

Table 42: Neonatal deaths by mothers' pregnancy characteristics by year: United Kingdom and Crown Dependencies, for births in 2017 to 2019

Mother's pregnancy characteristics	Number (%) [§]					
	Neonatal deaths					
	2017		2018		2019	
Booking (weeks gestational age)						
Less than 12 ⁺⁰	797	(62.9)	787	(65.6)	763	(65.9)
12 ⁺⁰ to 17 ⁺⁶	221	(17.4)	196	(16.3)	171	(14.8)
18 ⁺⁰	85	(6.7)	95	(7.9)	84	(7.3)
Not known	164	(12.9)	121	(10.1)	140	(12.1)
Documented poor antenatal care attender						
No	1,057	(83.4)	994	(82.9)	970	(83.8)
Yes	38	(3.0)	59	(4.9)	52	(4.5)
Not known	172	(13.6)	146	(12.2)	136	(11.7)
Assisted conception						
Not assisted	1,097	(86.6)	1,045	(87.2)	1,018	(87.9)
Ovulation induction only	13	(1.0)	9	(0.8)	5	(0.4)
In vitro fertilisation (IVF) [°]	58	(4.6)	57	(4.8)	59	(5.1)
Artificial insemination [□]	2	(0.2)	6	(0.5)	4	(0.3)
Not known	97	(7.7)	82	(6.8)	72	(6.2)

[§] excluding terminations of pregnancy and births <24⁺⁰ weeks gestational age

[°] including egg donation and intra-cytoplasmic sperm injection

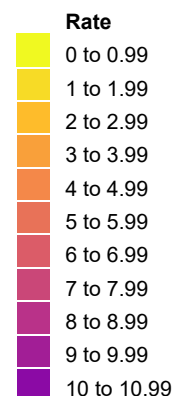
[□] with or without ovulation induction

Data source: MBRRACE-UK

4.4 Multidimensional effects of ethnicity, deprivation and mother's age on perinatal mortality

Table 43: Stillbirths rates by baby's ethnicity, mother's age and mother's socio-economic deprivation quintile of residence: United Kingdom and Crown Dependencies, for births in 2015 to 2019

Baby's ethnicity	Mother's age	Rate per 1,000 total births					
		Socio-economic deprivation quintile*					
		1 - Least deprived	2	3	4	5 - Most deprived	All quintiles
White	<25	3.56	3.75	4.22	4.37	4.90	4.30
	25-29	2.76	2.87	3.07	3.62	4.27	3.31
	30-34	2.61	2.72	2.93	3.52	4.16	3.06
	35+	2.95	3.57	3.58	4.03	5.79	3.69
	All ages	2.84	3.11	3.35	3.84	4.65	
Mixed	<25	5.43	3.25	4.05	4.25	6.29	4.86
	25-29	2.32	2.90	3.70	3.91	4.42	3.62
	30-34	1.95	3.73	2.74	4.00	4.97	3.46
	35+	3.56	3.69	5.60	5.77	5.72	4.76
	All ages	2.92	3.47	3.97	4.44	5.31	
Asian	<25	6.51	3.00	7.88	6.50	6.19	6.35
	25-29	3.50	4.61	5.52	5.87	5.52	5.35
	30-34	3.61	4.41	5.03	5.55	5.84	5.09
	35+	4.97	4.71	6.76	7.70	6.91	6.47
	All ages	4.13	4.44	5.84	6.22	6.00	
Black	<25	1.55	10.78	10.25	7.18	8.76	8.43
	25-29	6.09	4.30	6.45	5.85	6.53	6.10
	30-34	6.30	6.24	5.93	6.66	8.05	6.98
	35+	6.79	8.96	8.04	10.33	10.54	9.66
	All ages	6.05	7.06	7.22	7.61	8.43	
All 4 ethnicities	<25	3.72	3.80	4.62	4.65	5.26	
	25-29	2.82	3.03	3.54	4.13	4.64	
	30-34	2.69	3.00	3.34	4.16	4.93	
	35+	3.15	3.81	4.40	5.48	6.73	



§ excluding terminations of pregnancy and births <24⁺⁰ weeks gestational age

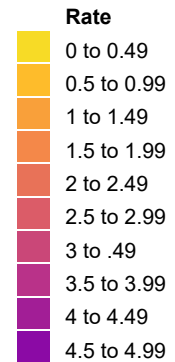
* based on mothers' postcodes at time of birth, using the Children in Low-Income Families Local Measure

Data sources: MBRRACE-UK, PDS, ONS, NRS, PHS, NIMATS, States of Guernsey, States of Jersey

© 2021, re-used with the permission of NHS Digital. All rights reserved.

Table 44: Neonatal mortality rates by baby's ethnicity, mother's age and mother's socio-economic deprivation quintile of residence: United Kingdom and Crown Dependencies, for births in 2015 to 2019

Baby's ethnicity	Mother's age	Rate per 1,000 live births					
		Socio-economic deprivation quintile*					
		1 - Least deprived	2	3	4	5 - Most deprived	All quintiles
White	<25	1.81	1.92	2.00	2.31	2.44	2.17
	25-29	1.24	1.43	1.41	1.86	2.02	1.59
	30-34	1.26	1.21	1.31	1.64	1.96	1.41
	35+	1.33	1.69	1.86	1.80	2.43	1.70
	All ages	1.33	1.49	1.58	1.90	2.19	
Mixed	<25	0.68	0.65	1.60	1.56	1.75	1.44
	25-29	1.55	1.58	1.11	1.71	1.40	1.46
	30-34	1.14	0.92	1.80	1.42	2.10	1.47
	35+	1.24	0.79	2.00	2.65	1.68	1.64
	All ages	1.22	1.00	1.65	1.81	1.73	
Asian	<25	2.19	4.38	4.61	2.89	3.00	3.40
	25-29	1.76	2.32	2.22	2.60	2.78	2.46
	30-34	2.07	1.97	2.38	2.69	3.07	2.52
	35+	2.22	2.21	2.38	3.74	3.45	2.92
	All ages	2.05	2.30	2.54	2.90	3.04	
Black	<25	4.65	0.00	2.74	1.31	3.75	2.60
	25-29	2.04	2.02	1.87	2.26	2.05	2.08
	30-34	3.01	2.83	1.91	2.06	3.06	2.53
	35+	3.60	2.03	2.46	2.75	3.10	2.81
	All ages	3.10	2.11	2.17	2.22	2.89	
All 4 ethnicities	<25	1.80	1.92	2.17	2.26	2.49	
	25-29	1.29	1.52	1.51	2.00	2.09	
	30-34	1.33	1.29	1.52	1.84	2.28	
	35+	1.40	1.68	1.97	2.29	2.65	



§ excluding terminations of pregnancy and births <24⁺⁰ weeks gestational age

* based on mothers' postcodes at time of birth, using the Children in Low-Income Families Local Measure

Data sources: MBRRACE-UK, PDS, ONS, NRS, PHS, NIMATS, States of Guernsey, States of Jersey

© 2021, re-used with the permission of NHS Digital. All rights reserved.

Table 45: Total births by baby's ethnicity, mother's age and mother's socio-economic deprivation quintile of residence: United Kingdom and Crown Dependencies, for births in 2015 to 2019

Baby's ethnicity	Mother's age	Total births					
		Socio-economic deprivation quintile*					
		1 - Least deprived	2	3	4	5 - Most deprived	All quintiles
White	<25	55,348	82,142	101,146	116,597	147,572	502,805
	25-29	135,302	157,577	154,639	145,676	145,960	739,154
	30-34	222,352	198,773	163,535	133,653	112,383	830,696
	35+	179,390	139,576	106,575	82,134	63,851	571,526
	All ages	592,392	578,068	525,895	478,060	469,766	2,174,415
Mixed	<25	2,948	4,620	6,911	9,648	12,090	36,217
	25-29	6,476	8,264	9,990	11,767	12,888	49,385
	30-34	12,286	12,060	12,792	12,744	11,469	61,351
	35+	12,932	11,393	11,081	10,231	8,392	54,029
	All ages	34,642	36,337	40,774	44,390	44,839	200,982
Asian	<25	1,842	3,664	7,873	11,839	12,114	37,332
	25-29	8,562	13,885	25,354	32,540	29,694	110,035
	30-34	15,496	20,428	31,192	35,145	29,812	132,073
	35+	10,869	13,175	18,652	21,032	18,663	82,391
	All ages	36,769	51,152	83,071	100,556	90,283	361,831
Black	<25	646	1,392	3,316	6,131	8,332	19,817
	25-29	1,969	3,485	6,980	12,489	16,685	41,608
	30-34	3,014	4,970	8,935	15,172	18,758	50,849
	35+	2,799	4,465	8,208	14,327	16,975	46,774
	All ages	8,428	14,312	27,439	48,119	60,750	159,048
All 4 ethnicities	<25	60,784	91,818	119,246	144,215	180,108	596,171
	25-29	152,309	183,211	196,963	202,472	205,227	940,182
	30-34	253,148	236,231	216,454	196,714	172,422	1,074,969
	35+	205,990	168,609	144,516	127,724	107,881	754,720

* based on mothers' postcodes at time of birth, using the Children in Low-Income Families Local Measure
 Data sources: MBRRACE-UK, PDS, ONS, NRS, PHS, NIMATS, States of Guernsey, States of Jersey
 © 2021, re-used with the permission of NHS Digital. All rights reserved.

Table 46: Live births by baby's ethnicity, mother's age and mother's socio-economic deprivation quintile of residence: United Kingdom and Crown Dependencies, for births in 2015 to 2019

Baby's ethnicity	Mother's age	Total live births					
		Socio-economic deprivation quintile*					
		1 - Least deprived	2	3	4	5 - Most deprived	All quintiles
White	<25	55,151	81,834	100,719	116,088	146,849	500,641
	25-29	134,929	157,125	154,164	145,149	145,337	736,704
	30-34	221,771	198,232	163,056	133,182	111,915	828,156
	35+	178,860	139,078	106,193	81,803	63,481	569,415
	All ages	590,711	576,269	524,132	476,222	467,582	2,634,916
Mixed	<25	2,932	4,605	6,883	9,607	12,014	36,041
	25-29	6,461	8,240	9,953	11,721	12,831	49,206
	30-34	12,262	12,015	12,757	12,693	11,412	61,139
	35+	12,886	11,351	11,019	10,172	8,344	53,772
	All ages	34,541	36,211	40,612	44,193	44,601	200,158
Asian	<25	1,830	3,653	7,811	11,762	12,039	37,095
	25-29	8,532	13,821	25,214	32,349	29,530	109,446
	30-34	15,440	20,338	31,035	34,950	29,638	131,401
	35+	10,815	13,113	18,526	20,870	18,534	81,858
	All ages	36,617	50,925	82,586	99,931	89,741	359,800
Black	<25	645	1,377	3,282	6,087	8,259	19,650
	25-29	1,957	3,470	6,935	12,416	16,576	41,354
	30-34	2,995	4,939	8,882	15,071	18,607	50,494
	35+	2,780	4,425	8,142	14,179	16,796	46,322
	All ages	8,377	14,211	27,241	47,753	60,238	157,820
All 4 ethnicities	<25	60,558	91,469	118,695	143,544	179,161	593,427
	25-29	151,879	182,656	196,266	201,635	204,274	936,710
	30-34	252,468	235,524	215,730	195,896	171,572	1,071,190
	35+	205,341	167,967	143,880	127,024	107,155	751,367

* based on mothers' postcodes at time of birth, using the Children in Low-Income Families Local Measure
 Data sources: MBRRACE-UK, PDS, ONS, NRS, PHS, NIMATS, States of Guernsey, States of Jersey
 © 2021, re-used with the permission of NHS Digital. All rights reserved.

5. Perinatal mortality in the UK from routine sources

Data presented in Table 47 shows the stillbirth, neonatal death and extended perinatal death rates in the UK for 2008 to 2019 obtained from statutory registered births and deaths.

Table 47: Total stillbirth, neonatal, and extended perinatal mortality rates from statutory registrations by country: United Kingdom, 2009 to 2019

Rate per 1,000 births	Country	Year of death										
		2009	2010	2011	2012	2013	2014	2015	2016	2017	2018	2019
Stillbirths [†]	UK	5.19	5.07	5.17	4.82	4.64	4.57	4.40	4.41	4.13	4.03	3.86
	England	5.17	5.08	5.23	4.81	4.65	4.59	4.42	4.35	4.12	4.01	3.83
	Scotland	5.34	4.93	5.08	4.70	4.16	4.00	3.81	4.31	4.24	3.69	3.48
	Wales	5.13	5.26	4.67	5.11	4.51	5.25	4.73	4.98	4.73	4.39	4.62
	Northern Ireland	4.75	4.13	3.59	4.18	4.51	3.31	3.13	3.39	4.40	3.45	2.98
Neonatal deaths [‡]	UK	3.12	2.96	2.95	2.85	2.71	2.71	2.72	2.79	2.76	2.79	2.90
	England	3.10	2.93	2.94	2.86	2.71	2.69	2.73	2.80	2.87	2.82	2.88
	Scotland	2.79	2.55	2.71	2.55	2.34	2.42	2.03	2.68	2.25	2.18	2.21
	Wales	3.09	2.73	2.75	2.92	2.43	2.38	2.46	2.00	2.49	2.49	3.30
	Northern Ireland	3.89	4.58	3.48	2.77	3.38	3.94	4.21	3.57	2.77	3.24	3.92
Extended perinatal deaths [†]	UK	8.30	8.01	8.11	7.59	7.33	7.26	7.11	7.17	7.03	6.61	6.75
	England	8.25	8.00	8.16	7.58	7.34	7.26	7.14	7.13	6.98	6.82	6.70
	Scotland	8.12	7.46	7.78	7.24	6.49	6.41	5.84	6.98	6.48	5.86	5.68
	Wales	8.20	7.97	7.41	7.85	6.93	7.62	7.18	6.98	7.21	6.88	7.91
	Northern Ireland	8.63	8.69	7.06	6.94	7.87	7.23	7.33	6.95	7.16	6.68	6.88

[†] per 1,000 total births

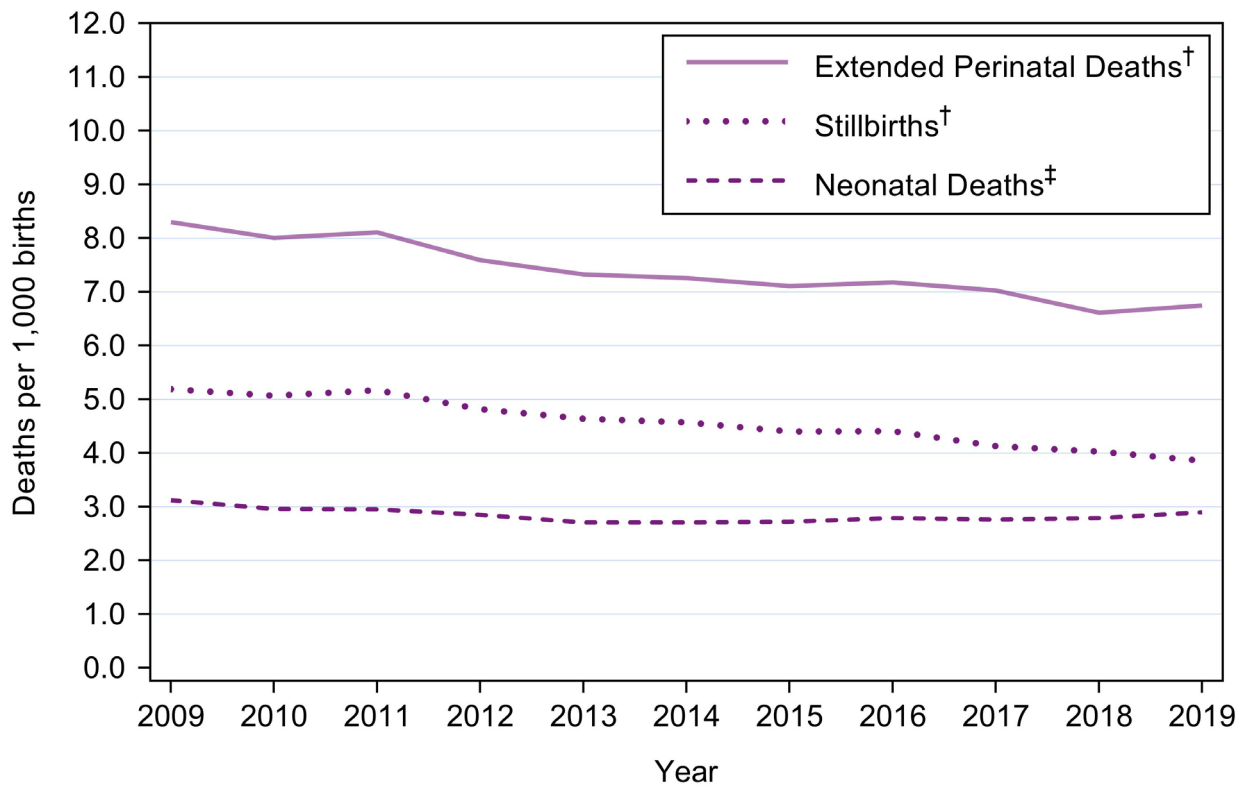
[‡] per 1,000 live births

Data sources: ONS, NRS, NISRA

Differences in the law in Northern Ireland relating to the termination of pregnancy during this period means that a greater proportion of babies with severe congenital anomalies are born, but then die after birth.

The UK-wide rates are also shown in Figure 4, overleaf.

Figure 4: Total stillbirth, neonatal, and extended perinatal mortality rates from statutory registrations: United Kingdom, 2009 to 2019



[†] per 1,000 total births

[‡] per 1,000 live births

Data sources: ONS, NRS & NISRA

6. Timeliness of notification and completeness of the data reported to MBRRACE-UK

6.1 Timeliness of notification

Table 48: Percentage of stillbirths, neonatal deaths and extended perinatal deaths notified to MBRRACE-UK within 30 days, by country: 2017 to 2019

Country	Stillbirths [†]			Neonatal deaths [‡]			Extended perinatal deaths [†]		
	2017	2018	2019	2017	2018	2019	2017	2018	2019
UK and Crown Dependencies	57.5	69.2	80.4	51.4	63.7	76.3	55.5	67.3	79.0
England	60.5	73.3	83.6	54.8	65.8	77.7	58.6	70.8	81.6
Scotland	26.1	30.7	59.7	18.8	47.8	75.9	23.9	35.9	64.7
Wales	65.0	54.7	59.4	44.1	61.7	70.3	58.8	56.9	63.4
Northern Ireland	39.5	53.4	65.9	32.2	44.3	60.8	37.1	49.7	63.5

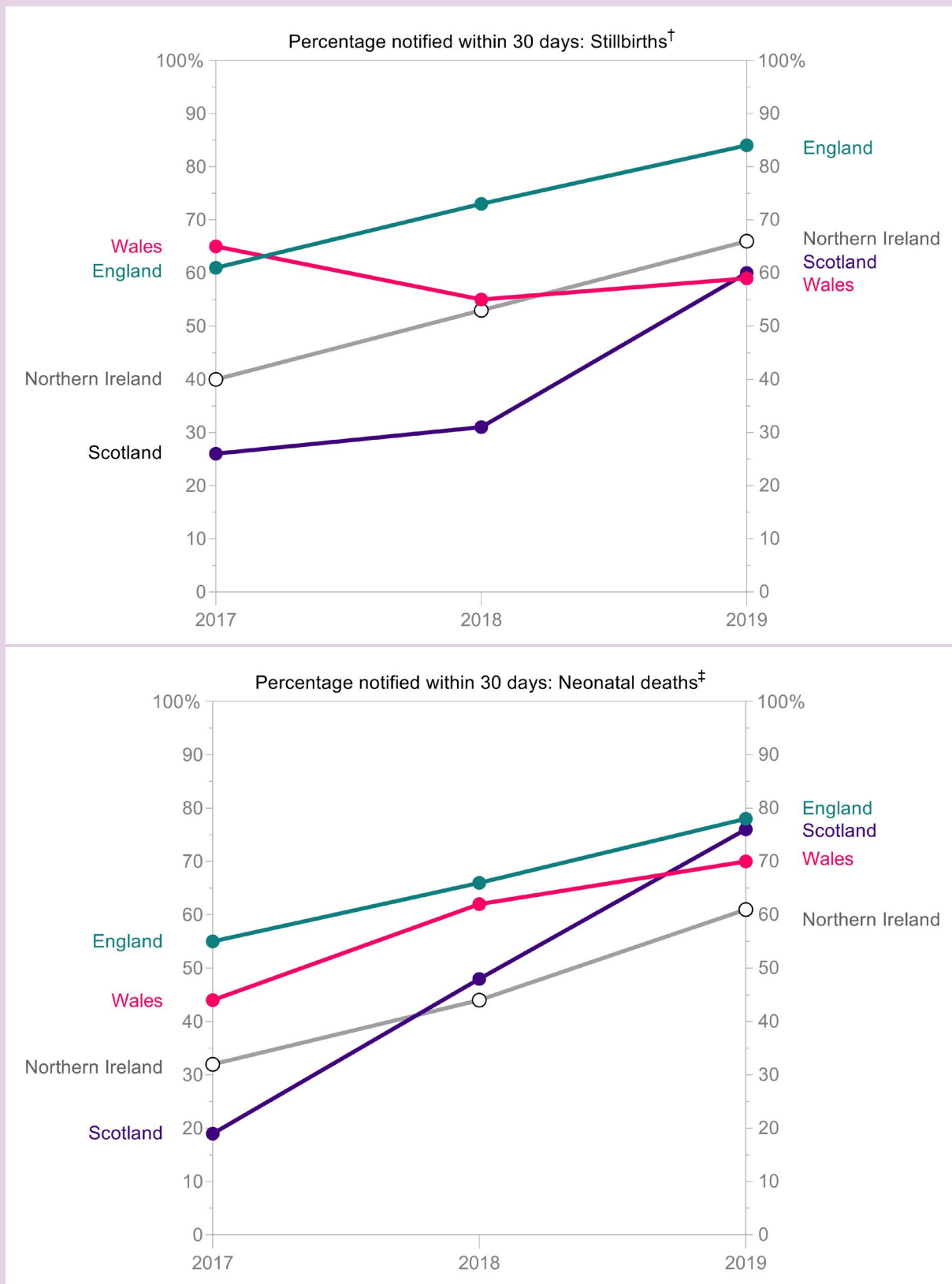
[†] Includes late fetal losses at 22-23 weeks gestational age

[‡] From 22⁺⁰ weeks gestational age at birth

Excluding terminations of pregnancy

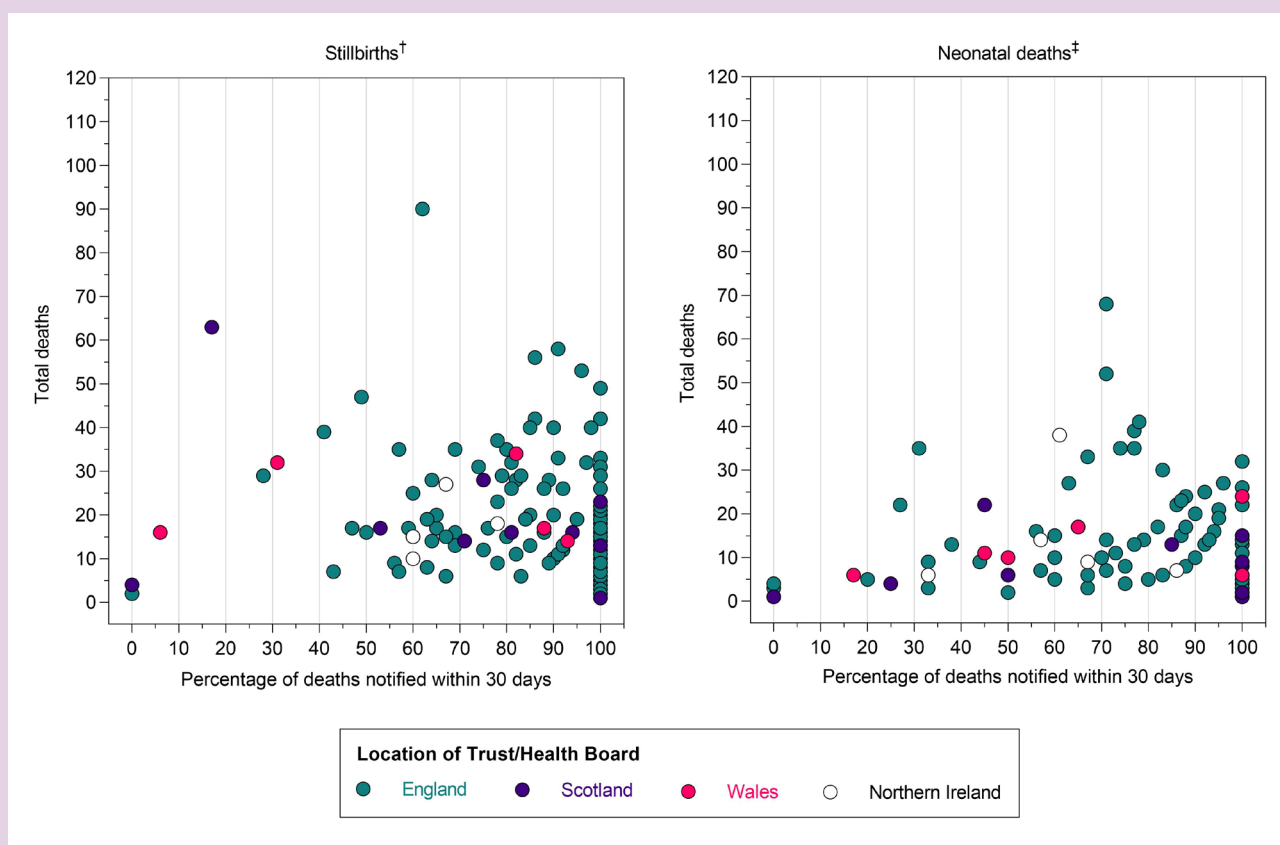
Data source: MBRRACE-UK

Figure 5: Percentage of stillbirths and neonatal deaths notified to MBRRACE-UK within 30 days, by country: 2017 to 2019



[†] Includes late fetal losses at 22-23 weeks gestational age
[‡] From 22⁺⁰ weeks gestational age at birth
 Excluding terminations of pregnancy
 Data source: MBRRACE-UK

Figure 6: Percentage of stillbirths and neonatal deaths notified to MBRRACE-UK within 30 days, by Trust and Health Board: 2019



† Includes late fetal losses at 22-23 weeks gestational age

‡ From 22⁺⁰ weeks gestational age at birth

Excluding terminations of pregnancy

Data source: MBRRACE-UK

Table 49: Number of days to notify 90% of stillbirths, neonatal deaths and extended perinatal deaths, by country: 2017 to 2019

Country	Stillbirths†			Neonatal deaths‡			Extended perinatal deaths†		
	2017	2018	2019	2017	2018	2019	2017	2018	2019
UK and Crown Dependencies	206	129	56	302	159	74	239	140	60
England	199	103	47	297	140	64	224	114	52
Scotland	326	395	107	343	338	91	337	368	107
Wales	188	353	200	305	226	277	261	298	233
Northern Ireland	143	142	128	247	159	325	160	156	183

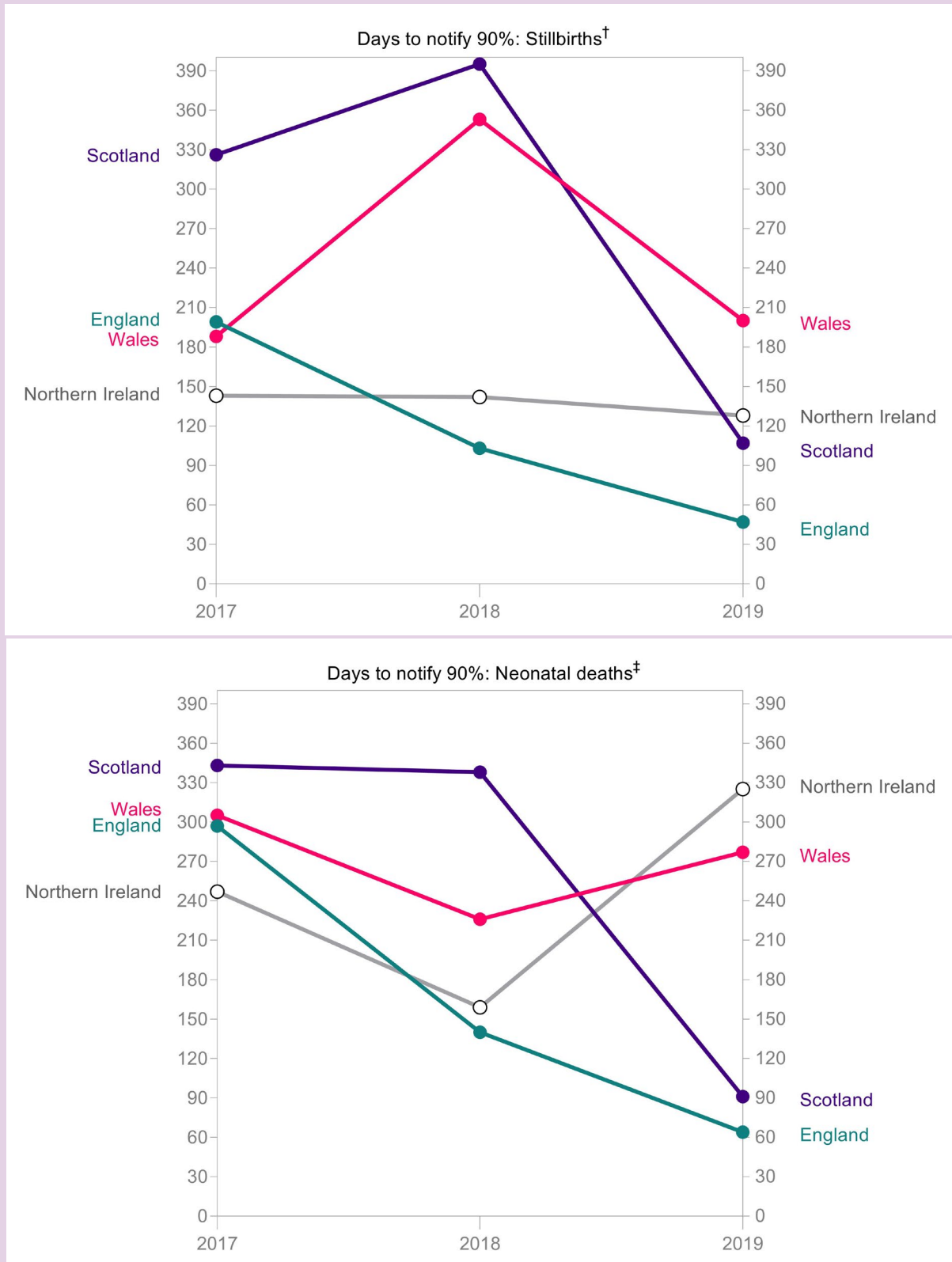
† Includes late fetal losses at 22-23 weeks gestational age

‡ From 22⁺⁰ weeks gestational age at birth

Excluding terminations of pregnancy

Data source: MBRRACE-UK

Figure 7: Number of days to notify 90% of stillbirths and neonatal deaths, by country: 2017 to 2019



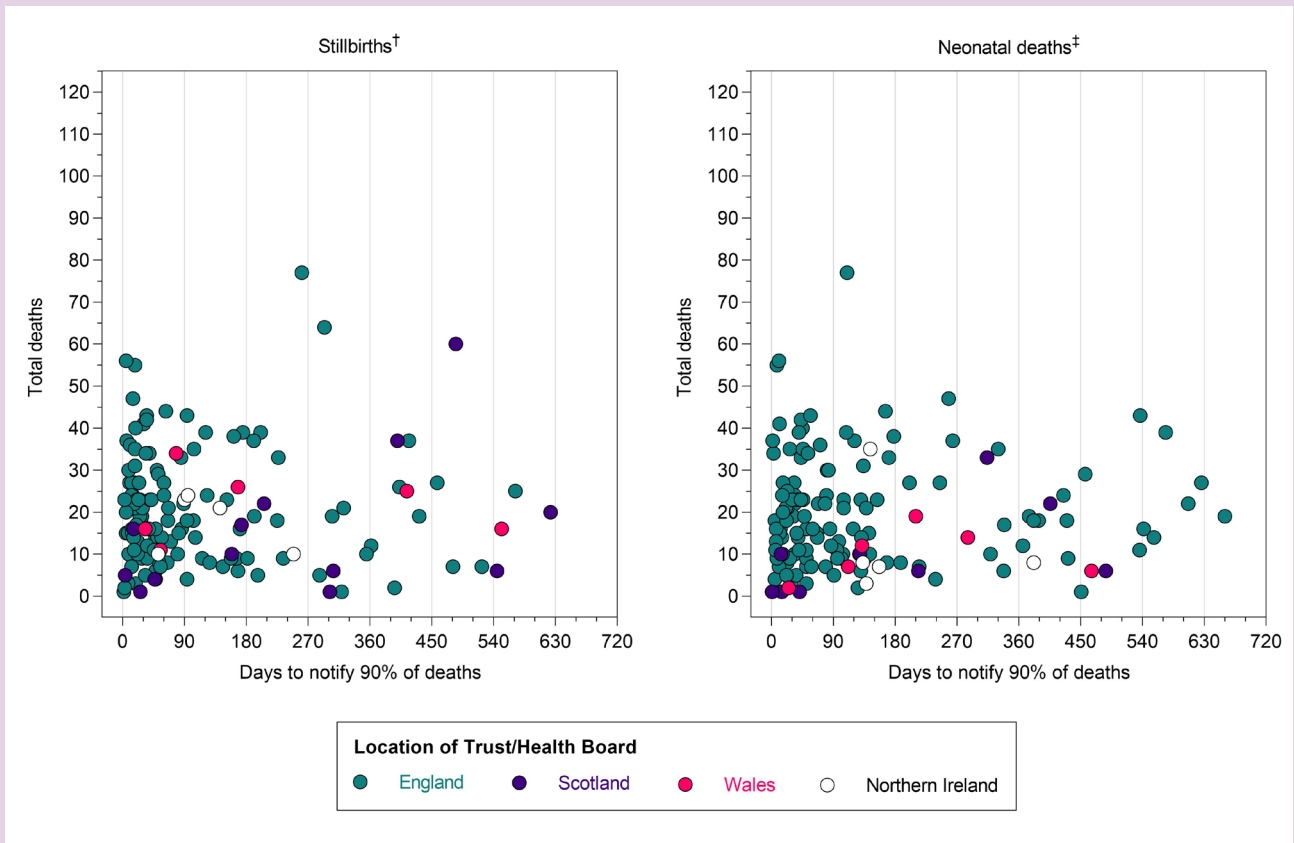
[†] Includes late fetal losses at 22-23 weeks gestational age

[‡] From 22⁺ weeks gestational age at birth

Excluding terminations of pregnancy

Data source: MBRRACE-UK

Figure 8: Number of days to notify 90% of stillbirths and neonatal deaths, by Trust and Health Board: 2019



[†] Includes late fetal losses at 22-23 weeks gestational age

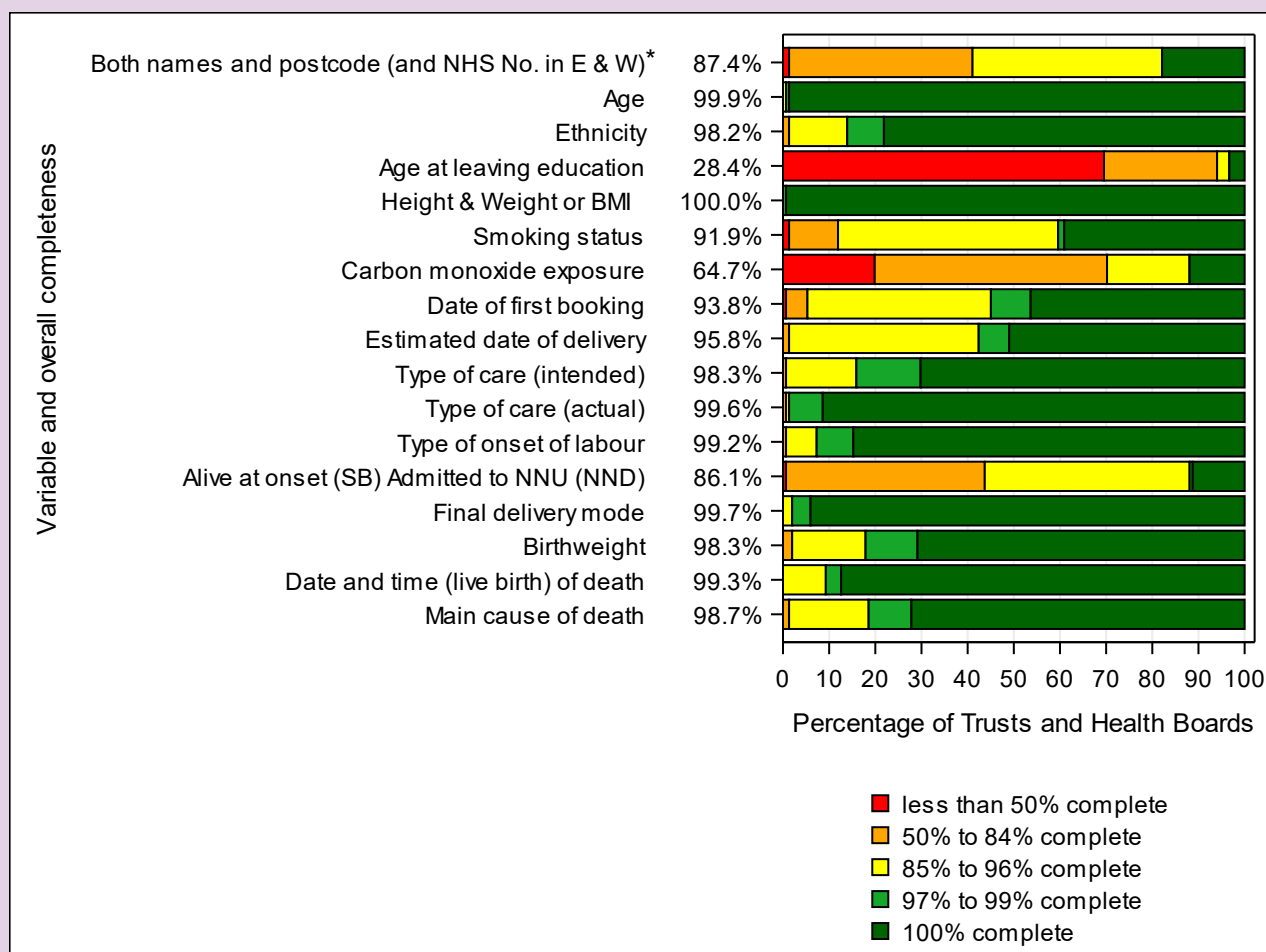
[‡] From 22⁺⁰ weeks gestational age at birth

Excluding terminations of pregnancy

Data source: MBRRACE-UK

6.2 Completeness of key data items

Figure 9: Level of completeness of data reported by Trusts and Health Boards for extended perinatal deaths: United Kingdom and Crown Dependencies, for births in 2019



* Postcode only in Northern Ireland as mother's name is not reported to MBRRACE-UK

Data source: MBRRACE-UK

The completeness for groups of key data items reported to MBRRACE-UK is shown in Table 37, by reporting Trust and Health Board. The percentage shown is the combined percentage for all of the items in each group:

1. Mother's details: given name (not Northern Ireland); family name (not Northern Ireland); postcode of residence at time of birth (not Northern Ireland); NHS Number (not Scotland or Northern Ireland); ethnicity; age, age at leaving full-time education.
2. Booking information: smoking status; breath carbon monoxide; BMI.
3. Antenatal care: intended type of care at booking; intended place of birth at booking; EDD.
4. Birth and baby's characteristics for stillbirths: actual place of birth; date and time of birth; final birth mode; type of onset of labour; birthweight; gestational age at birth.
5. Birth and baby's characteristics for neonatal deaths: actual place of birth; date and time of birth; final birth mode; type of onset of labour; birthweight; gestational age at birth.
6. Baby's outcome: date death confirmed (stillbirths only); whether alive at onset of care in labour (stillbirths only), whether admitted to neonatal unit (neonatal deaths only); main cause of death.

The colours in Table 50 represent the level of data completeness for each Trust and Health Board:

- **red**: less than 70.0% complete;
- **amber**: 70.0% to 84.9% complete;
- **yellow**: 85.0% to 96.9% complete;
- **light green**: 97.0% to 99.9% complete;
- **dark green**: 100.0% complete.

Also shown is the percentage of deaths notified within the MBRRACE-UK benchmark of 30 days, and the number of days taken to notify 90% of deaths, by reporting Trust and Health Board.

Table 50: Timeliness of notification and completeness of selected data items reported to MBRRACE-UK by NHS Trust (England), Health Board (Scotland and Wales), Health and Social Care Trust (Northern Ireland), and Crown Dependency: United Kingdom and Crown Dependencies, for births in 2019

Trust or Health Board	Percentage of deaths notified within 30 days	Days to notify 90% of deaths	Mother's details	Booking information	Antenatal care	Birth and baby's characteristics for stillbirths	Birth and baby's characteristics for neonatal deaths	Baby's outcome
ENGLAND								
Airedale NHS Foundation Trust	58.3	80	75	66.7	75	100	100	94.4
Ashford and St Peter's Hospital NHS Foundation Trust	91.9	24	77.1	62	82.4	100	98.2	98.1
Barking, Havering and Redbridge University Hospitals NHS Trust	96.0	4	91.1	97.2	95.1	99	94.4	92.4
Barnsley Hospital NHS Foundation Trust	100	15	77.5	100	100	100	*	90
Barts Health NHS Trust	53.6	144	86.6	85.3	96.3	99.3	100	94
Bedfordshire Hospitals NHS Foundation Trust	82.5	77	77.6	95.3	98.2	99.4	100	94.7
Birmingham Women's and Children's NHS Foundation Trust	80.6	61	79.3	85.1	97.4	100	98.9	98.9
Blackpool Teaching Hospitals NHS Foundation Trust	70.0	67	91.3	96.7	95	100	100	93.3
Bolton NHS Foundation Trust	78.6	43	73.2	85.7	97.6	99.3	95.8	95.2
Bradford Teaching Hospitals NHS Foundation Trust	98.6	13	75	92.4	96.2	99.6	98.9	96.7
Brighton and Sussex University Hospitals NHS Trust	100	9	76	73.1	97.4	98.6	100	94.9
Buckinghamshire Healthcare NHS Trust	84.6	40	75	87.2	94.9	98.3	*	92.3
Calderdale and Huddersfield NHS Foundation Trust	94.4	12	72.2	96.3	100	100	100	94.4
Cambridge University Hospitals NHS Foundation Trust	97.0	16	83.8	86.3	97.1	100	100	89.2
Chelsea and Westminster Hospital NHS Foundation Trust	86.2	61	73	89.1	95.8	99.5	100	95.8
Chesterfield Royal Hospital NHS Foundation Trust	90.9	16	88.9	92.6	100	100	100	100
Countess of Chester Hospital NHS Foundation Trust	100	12	66.7	94.4	100	100	100	88.9
County Durham and Darlington NHS Foundation Trust	100	8	68.8	91.7	91.7	100	100	93.1

Trust or Health Board	Percentage of deaths notified within 30 days	Days to notify 90% of deaths	Mother's details	Booking information	Antenatal care	Birth and baby's characteristics for stillbirths	Birth and baby's characteristics for neonatal deaths	Baby's outcome
Croydon Health Services NHS Trust	100	7	81.5	88.4	98.6	100	100	94.2
Dartford and Gravesham NHS Trust	100	5	92.5	100	100	100	100	90
Doncaster and Bassetlaw Teaching Hospitals NHS Foundation Trust	75.0	46	90.6	100	100	100	100	97.9
Dorset County Hospital NHS Foundation Trust	80.0	51	100	100	100	100	100	100
East Cheshire NHS Trust	100	2	62.5	83.3	100	94.4	*	100
East Kent Hospitals University NHS Foundation Trust	98.1	5	69.7	93.6	94.9	100	99	91.7
East Lancashire Hospitals NHS Trust	66.0	63	72	89.3	99.3	99.4	100	94.7
East Suffolk and North Essex NHS Foundation Trust	63.6	60	83	87.9	97	100	100	90.9
East Sussex Healthcare NHS Trust	100	15	66.7	86.1	100	100	100	94.4
East and North Hertfordshire NHS Trust	100	4	82.5	100	96.7	100	100	100
Epsom and St Helier University Hospitals NHS Trust	84.6	40	69.2	71.8	97.4	100	100	94.9
Frimley Health NHS Foundation Trust	74.4	77	85.9	88.9	95.7	99.4	100	94.9
Gateshead Health NHS Foundation Trust	83.3	56	72.9	83.3	100	100	*	97.2
George Eliot Hospital NHS Trust	44.4	123	77.8	100	100	100	100	92.6
Gloucestershire Hospitals NHS Foundation Trust	88.2	74	77.9	88.2	98	98.8	100	98
Great Western Hospitals NHS Foundation Trust	66.7	94	65	84.4	93.3	100	100	82.2
Guy's and St Thomas' NHS Foundation Trust	83.3	35	72.2	87	92.6	100	97.5	95.4
Hampshire Hospitals NHS Foundation Trust	42.9	452	72.6	96.8	98.4	100	100	96.8
Harrogate and District NHS Foundation Trust	100	16	88.6	97	100	100	100	97
Homerton University Hospital NHS Foundation Trust	100	11	73.6	90.6	98.7	99.3	100	95.6
Hull University Teaching Hospitals NHS Trust	96.9	13	84.8	98	97	100	100	96
Imperial College Healthcare NHS Trust	86.8	34	74.4	73.1	92.7	100	100	94.9
Isle of Wight NHS Trust	100	22	91.7	92.6	100	100	*	96.3
James Paget University Hospitals NHS Foundation Trust	92.9	24	86.5	89.7	100	100	83.3	89.7
Kettering General Hospital NHS Foundation Trust	100	5	93.8	89.6	100	98.1	100	93.8
King's College Hospital NHS Foundation Trust	53.1	121	70.3	90.6	98.4	100	100	94.3
Kingston Hospital NHS Foundation Trust	92.3	14	80.8	76.9	100	100	100	92.3
Lancashire Teaching Hospitals NHS Foundation Trust	96.0	16	78.8	88.5	98.7	100	100	96.2
Lewisham and Greenwich NHS Trust	44.4	307	70.7	74.6	89.1	99	100	92.8

Trust or Health Board	Percentage of deaths notified within 30 days	Days to notify 90% of deaths	Mother's details	Booking information	Antenatal care	Birth and baby's characteristics for stillbirths	Birth and baby's characteristics for neonatal deaths	Baby's outcome
Liverpool Women's NHS Foundation Trust	73.7	48	74	94.8	97	100	98.9	97.8
London North West University Healthcare NHS Trust	75.0	60	67.2	70.8	100	100	100	89.6
Maidstone and Tunbridge Wells NHS Trust	78.9	61	75	91.2	98.2	100	*	98.2
Manchester University NHS Foundation Trust	87.7	35	80.9	76.1	96.7	100	100	94.2
Medway NHS Foundation Trust	55.2	220	82.8	87.4	94.3	97.8	100	92
Mid Cheshire Hospitals NHS Foundation Trust	75.0	32	89.6	97.2	100	100	100	94.4
Mid and South Essex NHS Foundation Trust	91.9	26	74	87.8	98.2	100	100	94.1
Milton Keynes University Hospital NHS Foundation Trust	71.4	47	67.9	90.5	100	100	*	90.5
Norfolk and Norwich University Hospitals NHS Foundation Trust	55.2	67	84.2	87.8	96.7	100	100	92.2
North Bristol NHS Trust	84.2	41	79.6	80.7	99.1	100	100	96.5
North Cumbria Integrated Care NHS Foundation Trust	45.0	110	77.4	79.4	96.8	100	100	92.1
North Middlesex University Hospital NHS Trust	84.8	33	86.4	85.9	92.9	100	100	93.9
North Tees and Hartlepool NHS Foundation Trust	69.2	269	75	94.9	100	100	*	92.3
North West Anglia NHS Foundation Trust	100	4	82.6	89.9	89.9	99.2	100	98
Northampton General Hospital NHS Trust	70.0	40	82.5	91.7	100	100	100	98.3
Northern Devon Healthcare NHS Trust	100	3	81.3	91.7	100	100	*	100
Northern Lincolnshire and Goole Hospitals NHS Foundation Trust	84.6	44	86.5	89.7	100	100	100	97.4
Northumbria Healthcare NHS Foundation Trust	100	15	81.8	90.9	100	100	*	90.9
Nottingham University Hospitals NHS Trust	82.7	47	76.3	77.3	95.6	99.5	100	95.1
Oxford University Hospitals NHS Trust	89.7	29	81.9	75.9	98.9	100	100	96
Portsmouth Hospitals University NHS Trust	96.6	7	95.7	90.8	96.6	100	100	97.7
RAF Lakenheath (48th Medical Group)	0.0	623	75	66.7	100	*	*	66.7
Royal Berkshire NHS Foundation Trust	100	8	73.8	90	100	100	100	96.7
Royal Cornwall Hospitals NHS Trust	100	9	99	95.8	100	100	100	98.6
Royal Devon and Exeter NHS Foundation Trust	80.0	37	77.5	91.7	100	100	100	93.3
Royal Free London NHS Foundation Trust	81.3	47	77.3	71.9	96.9	99.3	100	95.8
Royal Surrey County Hospital NHS Foundation Trust	71.4	42	75	71.4	100	100	100	100
Royal United Hospitals Bath NHS Foundation Trust	76.9	56	80.8	89.7	100	100	83.3	100
Salisbury NHS Foundation Trust	57.1	63	71.4	90.5	100	100	*	95.2

Trust or Health Board	Percentage of deaths notified within 30 days	Days to notify 90% of deaths	Mother's details	Booking information	Antenatal care	Birth and baby's characteristics for stillbirths	Birth and baby's characteristics for neonatal deaths	Baby's outcome
Sandwell and West Birmingham Hospitals NHS Trust	97.4	12	84.9	86.8	97.4	100	100	93
Sheffield Teaching Hospitals NHS Foundation Trust	62.8	45	78.4	80.3	99.2	100	100	97
Sherwood Forest Hospitals NHS Foundation Trust	92.9	18	75	83.3	100	100	100	95.2
Somerset NHS Foundation Trust	100	15	83.3	91.7	100	100	100	97.2
South Tees Hospitals NHS Foundation Trust	88.2	32	71.2	96	96	98.7	96.7	92.9
South Tyneside and Sunderland NHS Foundation Trust	62.1	109	69.8	86.2	100	98.8	98.1	92
South Warwickshire NHS Foundation Trust	53.8	49	68.2	90.9	100	100	100	90.9
Southport and Ormskirk Hospital NHS Trust	100	12	81.3	83.3	100	100	*	87.5
St George's University Hospitals NHS Foundation Trust	71.1	91	75	81.1	83.3	97.6	100	92.4
St Helens and Knowsley Teaching Hospitals NHS Trust	100	10	73.5	96.1	100	100	100	94.1
Stockport NHS Foundation Trust	60.0	496	80	93.3	100	100	100	93.3
Surrey and Sussex Healthcare NHS Trust	66.7	49	83.3	66.7	100	100	100	88.9
Tameside and Glossop Integrated Care NHS Foundation Trust	69.2	74	71.2	92.3	92.3	98.3	100	94.9
The Dudley Group NHS Foundation Trust	100	11	85.7	92.1	93.7	98.9	100	92.1
The Hillingdon Hospitals NHS Foundation Trust	78.3	43	75	65.2	98.6	100	100	97.1
The Leeds Teaching Hospitals NHS Trust	77.2	46	79.8	85.3	88.5	98.6	99.7	96.1
The Mid Yorkshire Hospitals NHS Trust	34.4	171	73.4	95.8	95.8	99.4	100	92.7
The Newcastle upon Tyne Hospitals NHS Foundation Trust	82.5	46	71	73.8	94.6	99.1	100	96.4
The Pennine Acute Hospitals NHS Trust	81.5	88	80.7	78.6	95.6	100	98.3	92.5
The Portland Hospital for Women and Children	0.0	55	75	100	100	*	100	100
The Princess Alexandra Hospital NHS Trust	87.5	33	70	86.7	100	100	100	95.6
The Queen Elizabeth Hospital King's Lynn NHS Foundation Trust	100	8	75	87.9	100	98.1	*	97
The Rotherham NHS Foundation Trust	100	17	90	100	100	100	100	86.7
The Royal Wolverhampton Hospitals NHS Trust	85.3	33	81.7	96.7	96.7	100	100	93.3
The Shrewsbury and Telford Hospital NHS Trust	100	14	71.7	92.8	95.7	98.9	100	95.7
Torbay and South Devon NHS Foundation Trust	100	31	92.9	95.2	100	100	*	95.2
United Lincolnshire Hospitals NHS Trust	95.2	25	72.6	93.7	95.2	100	100	92.1
University College London Hospitals NHS Foundation Trust	78.6	81	72	67.5	91.1	99.2	95.8	95.1
University Hospital Southampton NHS Foundation Trust	96.6	19	89.4	80.2	94.4	100	100	95.5

Trust or Health Board	Percentage of deaths notified within 30 days	Days to notify 90% of deaths	Mother's details	Booking information	Antenatal care	Birth and baby's characteristics for stillbirths	Birth and baby's characteristics for neonatal deaths	Baby's outcome
University Hospitals Birmingham NHS Foundation Trust	91.6	11	76.3	92.5	95	99.6	97.8	94.6
University Hospitals Bristol and Weston NHS Foundation Trust	68.9	135	81	87.7	92.8	100	99.4	98.6
University Hospitals Coventry and Warwickshire NHS Trust	85.7	50	78	78.7	90.7	93.3	100	88.7
University Hospitals Dorset NHS Foundation Trust	93.3	21	73.3	93.3	91.1	100	100	93.3
University Hospitals Plymouth NHS Trust	64.3	51	77.7	79.8	98.8	100	100	96.4
University Hospitals of Derby and Burton NHS Foundation Trust	79.3	37	71.6	87.4	97.7	100	100	95.4
University Hospitals of Leicester NHS Trust	83.8	41	77.5	79.2	97.6	99.4	99.5	97.6
University Hospitals of Morecambe Bay NHS Foundation Trust	92.9	19	73.1	94.9	100	100	*	87.2
University Hospitals of North Midlands NHS Trust	95.1	12	86	97.6	97.6	98.3	100	95.1
Walsall Healthcare NHS Trust	100	10	85.2	95.5	100	100	100	93.9
Warrington and Halton Teaching Hospitals NHS Foundation Trust	88.9	519	84.4	91.7	87.5	100	100	91.7
West Hertfordshire Hospitals NHS Trust	96.7	18	80	87.8	100	100	100	92.2
West Suffolk NHS Foundation Trust	87.5	41	87.5	83.3	100	100	100	100
Western Sussex Hospitals NHS Foundation Trust	95.0	8	72.5	70	100	100	100	90
Whittington Health	76.5	78	67.6	100	100	100	100	90.2
Wirral University Teaching Hospital NHS Foundation Trust	87.0	38	79.3	92.8	100	100	100	92.8
Worcestershire Acute Hospitals NHS Trust	78.6	62	87.1	96.6	98.9	100	100	95.4
Wrightington, Wigan and Leigh NHS Foundation Trust	78.6	57	89.3	88.1	100	100	100	95.2
Wye Valley NHS Trust	100	22	83.9	92.9	100	100	100	90.5
Yeovil District Hospital NHS Foundation Trust	88.9	37	90.6	100	100	100	100	91.7
York Teaching Hospital NHS Foundation Trust	68.4	78	88.9	88.9	88.9	100	100	88.9
Scotland								
NHS Ayrshire & Arran	72.7	56	89.3	96.8	96.8	100	100	90.5
NHS Borders	100	23	75	100	100	100	100	100
NHS Dumfries & Galloway	12.5	466	78.1	70.8	91.7	100	100	95.8
NHS Fife	65.2	93	75	89.9	98.6	100	100	100
NHS Forth Valley	66.7	75	75	91.1	100	100	100	97.8
NHS Grampian	100	14	81.7	81.1	98.9	100	100	93.3
NHS Greater Glasgow and Clyde	24.7	451	78.5	81.6	92.5	98.7	98.4	91.8

Trust or Health Board	Percentage of deaths notified within 30 days	Days to notify 90% of deaths	Mother's details	Booking information	Antenatal care	Birth and baby's characteristics for stillbirths	Birth and baby's characteristics for neonatal deaths	Baby's outcome
NHS Highland	100	14	75	100	100	100	91.7	88.9
NHS Lanarkshire	96.0	23	75	90.1	93.8	97.4	100	92.6
NHS Lothian	83.7	35	75.6	93.8	96.9	100	100	96.9
NHS Orkney	No deaths reported by this organisation							
NHS Shetland	No deaths reported by this organisation							
NHS Tayside	92.3	30	76	83.3	97.4	98.5	100	93.6
NHS Western Isles	No deaths reported by this organisation							
Wales								
Aneurin Bevan University Health Board	34.9	287	76.7	66.7	98.4	100	100	96.1
Betsi Cadwaladr University Health Board	75.0	45	70.5	70.5	97	100	98.1	94.7
Cardiff and Vale University Health Board	95.1	17	78.6	70.6	96.8	100	100	97.6
Cwm Taf Morgannwg University Health Board	47.6	571	71.3	83.3	90	94	100	93.3
Hywel Dda University Health Board	95.0	29	73.8	90	100	100	100	91.7
Swansea Bay University Health Board	36.4	369	71.3	76.5	87.3	93.3	100	93.1
Northern Ireland								
Belfast Health and Social Care Trust	63.1	153	81.8	82.3	94.9	99.3	100	98.5
Northern Health and Social Care Trust	50.0	123	94.1	78.4	92.2	100	100	100
South Eastern Health and Social Care Trust	80.0	56	85.4	87.5	100	100	100	94.4
Southern Health and Social Care Trust	58.6	254	93.1	77	96.6	100	100	96.6
Western Health and Social Care Trust	62.5	128	82.6	78.3	92.8	100	100	97.1
Crown Dependencies								
Isle of Man Department of Health and Social Care	100	9	100	100	100	100	100	100
States of Guernsey Health and Social Services	0.0	283	75	66.7	100	*	100	100
States of Jersey Health and Social Services	100	18	50	77.8	100	100	*	88.9

* no eligible deaths were reported by this organisation

Acknowledgements

It is with grateful thanks that the MBRRACE-UK collaboration would like to acknowledge the contribution of the many healthcare professionals and staff from the health service and other organisations who were involved in the notification of perinatal deaths and the provision of data. Without the generous contribution of their time and expertise it would not have been possible to produce this report.

We would particularly like to thank all MBRRACE-UK reporters and other staff in NHS Trusts, Health Boards and Health and Social Care Trusts across the UK, and those from the Crown Dependencies, whose contribution made it possible to carry out this surveillance.

Members of the MBRRACE-UK collaboration

Jenny Kurinczuk, Professor of Perinatal Epidemiology, Director, National Perinatal Epidemiology Unit, National Programme Lead for MBRRACE-UK, University of Oxford

Marian Knight, Professor of Maternal and Child Population Health, NIHR Research Professor and Honorary Consultant in Public Health, Maternal Programme Lead for MBRRACE-UK, University of Oxford

Elizabeth Draper, Professor of Perinatal and Paediatric Epidemiology, Perinatal Programme Co-lead for MBRRACE-UK, University of Leicester

Charlotte Bevan, Senior Research and Prevention Officer, Sands

Peter Brocklehurst, Professor of Women's Health, Director Birmingham Clinical Trials Unit, University of Birmingham

Alan Fenton, Consultant Neonatal Paediatrician, The Newcastle upon Tyne Hospitals NHS Foundation Trust

Sara Kenyon, Professor in Evidence Based Maternity Care, University of Birmingham

Rohit Kotnis, General Practitioner, Oxford

Bradley Manktelow, Professor of Medical Statistics, University of Leicester

Janet Scott, Head of Research and Prevention, Sands

Lucy Smith, Professor of Perinatal Health, University of Leicester

Derek Tuffnell, Professor of Obstetrics and Gynaecology, Bradford Hospitals NHS Foundation Trust

Members of the Leicester based MBRRACE-UK team

Sophie Almond, Administrative Support

Caroline Ellershaw, Administrative Support

Ian Gallimore, Project Team Leader

Members of the Oxford based MBRRACE-UK team

Rachel Smith, Programme Manager

Thomas Boby, Senior Programmer

Kate De Blanger, Events Coordinator

Jane Forrester-Barker, Data Coordinator

Hatty Goddard, Programme Assistant

Miguel Neves, Programmer

Scott Redpath, C# Developer and Data Manager

Jemima Roberts, Data Coordinator

Shalimar Sahota, Data Assistant

Oliver Shaw, Administrative Assistant

Peter Smith, Programmer

Events Coordination Support: Dagmar Hutt
Dianne Ward

Office for National Statistics

Karen J Williams, Joanne Copsey, Anne Baker, Alex Howland, Justine Pooley

NHS Digital

Oliver Smith, Denise Pine, Dave Cronin and the Data Applications Team

National Records of Scotland

Julie Ramsay, Maria Kay, Shirley White

Information Services Division Scotland, NHS National Services Scotland

Rachael Wood, Kirsten Monteath, Carole Morris

Northern Ireland Maternal and Child Health, NSC Public Health Agency

Heather Reid, Joanne Gluck, Sinead Magill, Amy Watson, Melissa McAtamney

Health and Social Services Department, States of Guernsey

Cathryn Tyrrell, Jenny Cataroche

Health Intelligence Unit, Public Health Services, Jersey

Beverley Edwards, Keri Jervis, Sarah Davis

The Maternal, Newborn and Infant Clinical Outcome Review Independent Advisory Group

Matthew Jolly, National Clinical Director for Maternity Review and Women's Health, NHS England (IAG Chair)

Carol Beattie, Senior Medical Officer, Department of Health, Northern Ireland

Sarah Corcoran, Team Leader, Maternal and Infant Health, Scottish Government

Jacqueline Dunkley-Bent, Chief Midwifery Officer, Nursing Directorate, NHS England and NHS Improvement

Becky Gunn, Chair of the Royal College of Obstetricians and Gynaecologists Women's Network

Karen Jewell, Nursing Officer for Maternity and Early Years, Welsh Government

Corinne Love, Senior Medical Officer, Maternity and Women's Health, Scottish Government

Eddie Morris, Consultant, Obstetrics and Gynaecology, Norfolk and Norwich University Hospital,

President, Royal College of Obstetricians and Gynaecologists

Karen Todd, Head of Maternity and Neonatal, NHS Quality and Safety Investigations, Department of Health and Social Care, England

Zeenath Uddin, Head of Quality and Standards, Royal College of Midwives

Michele Upton, Head of Maternity and Neonatal Safety, NHS England and NHS Improvement

David Williams, Consultant Obstetric Physician, University College Hospital, London

Healthcare Quality Improvement Partnership

Tina Strack, Associate Director for Quality and Development, National Clinical Audit and Patient Outcomes Programme

Vivien Dunne, Project Manager

MBRRACE-UK Third Sector Stakeholder Group and Representatives

Katrina Alcock, MBF

Beverly Beech, AIMS for Better Births

Charlotte Bevan, Sands

Jane Brewin, Tommy's

Ann Chalmers, CBUK

Jenny Chambers, ICP Support

Debbi Chippington Derrick, AIMS for Better Births

Jo Dagustun, AIMS for Better Births

Jane Denton, MBF

Elizabeth Duff, NCT

Ian Evans, CAPT

Jane Fisher, ARC

Jane Gorringe, Twins Trust

Marcus Green, APEC

Clea Harmer, Sands
Michelle Hemmington, Campaign for Safer Births
Caroline Lee Davey, BLISS
Nicky Lyon, Campaign for Safer Births
Therese McAlorum, CBUK
Amy McCarthy, Twins Trust
Sarah McMullen, NCT
Ashley Martin, ROSPA
Mehali Patel, Sands
Nilushka Perera, Best Beginnings
Jane Plumb, GBS Support
Keith Reed, Twins Trust
Jessica Reeves, Sands
Janet Scott, Sands
Fiona Spargo-Mabbs, DSM Foundation
Claire Storey, ISA
Liz Thomas, AvMA
Cheryl Titherly, ARC
Maureen Treadwell, BTA
Nathalie Turville, Elizabeth Bryan Multiple Births Centre
Jenny Ward, Lullaby Trust

MBRRACE-UK Royal College and Professional Association Stakeholder Group and Representatives

Carmel Bagness - Royal College of Nursing
Sanjeev Deshpandi - British Association of Perinatal Medicine
Anita Dougall - Royal College of Obstetricians and Gynaecologists
Pamela Boyd - Royal College of Nursing
Denise Evans - Neonatal Nurses Association
Mervi Jokinen - Royal College of Midwives
Tamas Martan - British and Irish Paediatric Pathology Association
Surabhi Nanda - British Maternal Fetal Medicine Society

Marcia Philbin - Royal College of Paediatrics and Child Health

Felicity Plaat - Obstetric Anaesthetists Association and Royal College of Anaesthetists

Elena Pollina - British and Irish Paediatric Pathology Association

Shammi Ramlakhan - Royal College of Emergency Medicine

Rachel Scanlan - Royal College of Midwives

Trudi Seneviratne - Royal College of Psychiatrists

Clare Wade - Royal College of Physicians

Melissa Whitworth - British Maternal Fetal Medicine Society

Rachel Winch - Royal College of Paediatrics and Child Health

MBRRACE-UK

Department of Health Sciences
University of Leicester
George Davies Centre
University Road
Leicester
LE1 7RH

Tel: +44 (0)116 252 5425

Email: mbrrace-uk@npeu.ox.ac.uk

Web: www.npeu.ox.ac.uk/mbrrace-uk

